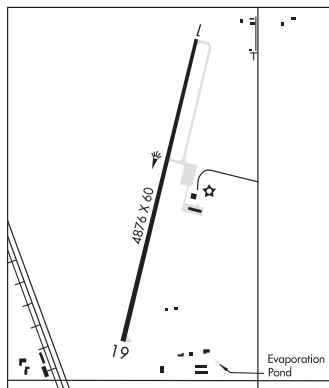


TULIA

CITY OF TULIA/SWISHER CO MUNI (IØ6) 2 NW UTC-6(-5DT) N34°34.01' W101°46.89' DALLAS-FT WORTH
 3503 B NOTAM FILE FTW L-6H
RWY 01-19: H4876X60 (ASPH) S-12.5 MIRL 0.3% up S
RWY 01: Road.
SERVICE: FUEL 100LL LGT MIRL Rwy 01-19 preset low instst, to incr instst ACTVT-122.8. Rtg bcn OTS indefly. Rwy 01-19 MIRL OTS indefly.
AIRPORT REMARKS: Attended intmnt. Livestock invof arpt. 100LL fuel self serve. For assistance call 806-995-3555.
AIRPORT MANAGER: 806-995-3504
COMMUNICATIONS: CTAF/UNICOM 122.7
CLEARANCE DELIVERY PHONE: For CD ctc Fort Worth ARTCC at 817-858-7584.
RADIO AIDS TO NAVIGATION: NOTAM FILE FTW.
PANHANDLE (H) (H) VORTACW 116.6 PNH Chan 113 N35°14.10' W101°41.94' 178° 40.2 NM to fld. 3595/8E.



TUSCOLA N32°14.14' W99°49.01' NOTAM FILE FTW. DALLAS-FT. WORTH
 (L) (L) VORW/DME 111.6 TQA Chan 53 340° 11.1 NM to Dyess AFB. 2058/10E. H-6H, L-17B

TWIN-OAKS (See SAN ANTONIO on page 420)

TXAEROSPORT AERODROME (See DORCHESTER on page 301)

TYLER CO (See WOODVILLE on page 449)

TYLER POUNDS RGNL (TYR)(KTYR) 3 W UTC-6(-5DT) N32°21.21' W95°24.18' DALLAS-FT WORTH
 544 B Class I, ARFF Index B NOTAM FILE TYR H-6I, L-17D
RWY 04-22: H8334X150 (CONC-GRVD) S-120, D-222, 2S-84, IAP, AD
 2T-223, 2D-357, 2D/D1-212, C5-342 PCN 68 R/C/W/T HIRL
RWY 04: MALSR. PAPI(P4L)—GA 3.0° TCH 55'.
RWY 22: REIL. PAPI(P4L)—GA 3.0° TCH 54'. Thld dsplct 600'. Tree.
RWY 13-31: H5198X150 (ASPH-GRVD) S-25, D-40 PCN 9 F/C/X/T
 HIRL 0.5% up SE
RWY 13: Pole.
RWY 31: VASI(V4L)—GA 3.0° TCH 54'. Road.
RWY 18-36: H4832X150 (ASPH-GRVD) S-109, D-172, 2D-289
 PCN 43 F/B/X/T MIRL 0.6% up S
RWY 18: Tree.
RWY 36: Tree.

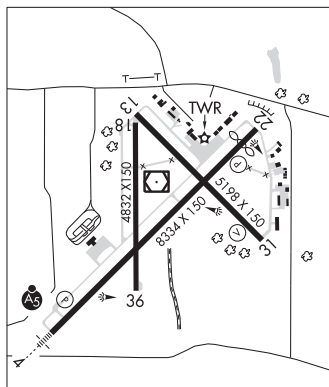
RUNWAY DECLARED DISTANCE INFORMATION

RWY 04:	TORA-8334	TODA-8334	ASDA-7734	LDA-7734
RWY 13:	TORA-5198	TODA-5198	ASDA-5198	LDA-5198
RWY 18:	TORA-4832	TODA-4832	ASDA-4832	LDA-4832
RWY 22:	TORA-8334	TODA-8334	ASDA-8334	LDA-7734
RWY 31:	TORA-5198	TODA-5198	ASDA-5198	LDA-5198
RWY 36:	TORA-4832	TODA-4832	ASDA-4832	LDA-4832

SERVICE: S4 FUEL 100LL, JET A OX 1, 3 LGT When ATCT clsd actvt
 MALSR Rwy 04; REIL Rwy 22; HIRL Rwy 04-22; MIRL Rwy 18-36; twy lgts—CTAF. HIRL Rwy 13-31 preset med instst, to incr instst actvt—CTAF. PAPI Rwy 04 and 22, VASI Rwy 31 opr consly. Rwy 22 VGSi unusbl byd 9 deg left and right of cntrln.

NOISE: Noise abatement procedures in effect Call 903-590-3048.

AIRPORT REMARKS: Attended 1100-0400Z†. West side passenger terminal ramp access rstd to air carrier. Conditions not monitored btn the hrs of 9:30 PM and 6:30 AM local.



CONTINUED ON NEXT PAGE

CONTINUED FROM PRECEDING PAGE

AIRPORT MANAGER: 903-531-2343

WEATHER DATA SOURCES: ASOS (903) 535-9105 LAWRS.

COMMUNICATIONS: CTAF 120.1 ATIS 126.25 UNICOM 122.95

RCO 122.3 (FORT WORTH RADIO)

Ⓡ LONGVIEW APP/DEP CON 128.75 (1200-0400Z‡)

Ⓡ FORT WORTH CENTER APP/DEP CON 135.25 (0400-1200Z‡)

TOWER 120.1 (1230-0330Z‡) GND CON 121.9

CLEARANCE DELIVERY PHONE: For CD if una to ctc on FSS freq, ctc Fort Worth ARTCC at 817-858-7584.

AIRSPACE: CLASS D svc 1230-0330Z‡; other times CLASS G.

RADIO AIDS TO NAVIGATION: NOTAM FILE TYR.

(T) (T) VORW/DME 114.2 TYR Chan 89 N32°21.35' W95°24.21' at fld. 537/6E.

DME unusable:

062°-092° byd 35 NM blo 2,200'

ILS/DME 111.95 I-TYR Chan 56(Y) Rwy 04. Class IE. Unmonitored when ATCT clsd. DME unusable byd 20° left of course.

COMM/NAV/WEATHER REMARKS: Helicopters operating inbound or outbound to/from the downtown hospitals state intention on 123.075.

UPTON CO (See MC CAMEY on page 377)

UTOPIA U66 N29°33.04' W99°31.03' /1278

SAN ANTONIO

AWOS-3T 121.125 (210) 384-5834 AWOS-3T ident associated with arpt Rancho Sabino Grande 6TX2.

L-19B

UVALDE

GARNER FLD (UVA)(KUVA) 3 E UTC-6(-5DT) N29°12.68' W99°44.62'

SAN ANTONIO

942 B NOTAM FILE UVA

H-7B, L-19B

RWY 15-33: H5256X100 (ASPH) S-30, D-40, 2D-40 MIRL 0.3% up NW

IAP

RWY 15: REIL. PAPI(P4L)—GA 3.0° TCH 36'. Trees.

RWY 33: REIL. PAPI(P4L)—GA 3.0° TCH 35'.

SERVICE: S4 FUEL 100LL, JET A OX 1, 2, 3, 4 LGT Actvt REIL Rwy 15 and 33; MIRL Rwy 15-33—CTAF.

AIRPORT REMARKS: Attended 1300-0100Z‡. Self svc 100LL. Turf strip 3300 ft X 75 ft parl to and east of Rwy 15-33 used by crop dusters only.

AIRPORT MANAGER: 830-278-3315

WEATHER DATA SOURCES: AWOS-3 124.175 (830) 278-8862.

COMMUNICATIONS: CTAF/UNICOM 122.8

UVALDE RCO 122.5 (SAN ANGELO RADIO)

Ⓡ HOUSTON CENTER APP/DEP CON 134.95

CLEARANCE DELIVERY PHONE: For CD ctc Houston ARTCC at 281-230-5622.

RADIO AIDS TO NAVIGATION: NOTAM FILE ERV.

CENTER POINT (VH) (H) VORTAC 117.5 CSI Chan 122 N29°55.34' W99°12.87' 205° 50.8 NM to fld. 2079/8E.

OX RANCH (1ØX) 23 NW UTC-6(-5DT) N29°27.69' W100°06.86'

SAN ANTONIO

1305 NOTAM FILE

H-7B, L-19B

RWY 17-35: H5744X70 (CONC) MIRL

RWY 17: REIL. PAPI(P2L)—GA 3.75° TCH 52'.

RWY 35: REIL. PAPI(P2L)—GA 3.3° TCH 60'. Fence. Rgt tfc.

SERVICE: FUEL JET A1+ LGT Actvt PAPI Rwy 17 and 35; MIRL Rwy 17-35—CTAF.

AIRPORT REMARKS: Unattended. Wildlife on and invof arpt. Acft wingspan rstrd to 70 ft. Trng TGL prohibited. Hel trng prohibited. Ovngt prkg ltd due to ltd ramp space. Cdn prior to ldg, 830-275-4962, info@oxranch.airport.com. Coml and student trng opns by pmt only. PPR for acft certd for 90500 TOG. 15 ft. brush, 6 ft berm, 8 ft fence in pri sfc.

AIRPORT MANAGER: 830-275-4962

COMMUNICATIONS: CTAF 122.8

CLEARANCE DELIVERY PHONE: For CD ctc Del Rio Apch at 830-298-5192, when Apch clsd ctc Houston ARTCC at 281-230-5622.

VALLEY INTL (See HARLINGEN on page 331)