

TULLAHOMA RGNL/WM NORTHERN FLD (THA)(KTHA) 2 NW UTC-6(-5DT) N35°22.81'ATLANTA
H-6K, 9A, L-16J
IAP

W86°14.81'

1084 B NOTAM FILE BNA

RWY 06-24: H5501X100 (ASPH-CONC) S-49, D-60 PCN 29 F/C/X/T MIRL**RWY 06:** ODALS. REIL. PAPI(P2L)—GA 3.0° TCH 41'. Tree.**RWY 24:** REIL. PAPI(P2L)—GA 3.0° TCH 33'. Thld dspcd 500'. Tree.**RWY 18-36:** H4205X100 (ASPH-CONC) S-37 MIRL**RWY 18:** REIL. PAPI(P2L)—GA 2.95° TCH 34'. Tree.**RWY 36:** REIL. PAPI(P2L)—GA 3.0° TCH 42'. Tree.**RWY 09-27:** 3130X100 (TURF)**RWY 09:** Tree. Rgt tfc.**RWY 27:** Tree.**RWY N-S:** 2083X100 (TURF)**RWY N:** Tree.**RWY S:** Tree.**SERVICE:** S4 FUEL 100, JET A LGT ACTVT ODALS Rwy 06; PAPI Rwy 18 and 36; MIRL Rwy 18-36—CTAF. MIRL Rwy 06-24 preset to low instnt; incr instnt—CTAF. Rwy 36 PAPI unusbl byd 7 degs left and right of cntrln.**AIRPORT REMARKS:** Attended 1400-0000Z†. Parachute Jumping, Glider Ops, geese and deer on and invof arpt; PAJA Indg zone E of paved Rwy 18-36 midfield. Rwy 09-27 field cond soft sfc when wet. Rwy 18-36 markings faded and peeling.**AIRPORT MANAGER:** 931-455-3884**WEATHER DATA SOURCES:** AWOS-3 128.325 (931) 454-2052.**COMMUNICATIONS:** CTAF/UNICOM 123.0

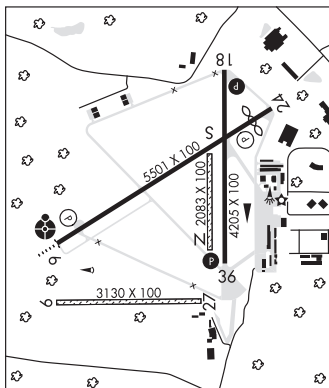
Ⓡ MEMPHIS CENTER APP/DEP CON 128.15

CLEARANCE DELIVERY PHONE: For CD ctc Memphis ARTCC at 901-368-8453/8449.**RADIO AIDS TO NAVIGATION:** NOTAM FILE BNA.

SHELBYVILLE (L) (L) VORW/DME 113.55 SYI Chan 82(Y) N35°33.72' W86°26.35' 140° 14.4 NM to fld. 813/1W.

DME unusable:

021°-045° byd 30 NM blo 4,500'

**UNION CITY****EVERETT-STEWART RGNL** (UCY)(KUCY) 4 SE UTC-6(-5DT) N36°22.78' W88°59.14'ST LOUIS
H-6J, L-16H
IAP

346 B NOTAM FILE MKL

RWY 01-19: H6503X100 (ASPH) S-45, D-60 PCN 3 F/D/X/T MIRL

0.6% up S

RWY 01: ODALS. REIL. PAPI(P4L)—GA 3.0° TCH 42'.**RWY 19:** REIL. PAPI(P4L)—GA 3.0° TCH 29'. P-line.**SERVICE:** S4 FUEL 100LL, JET A+ OX 1, 2, 3, 4 LGT ACTVT ODALS

Rwy 01—CTAF. PAPI Rwy 01 and Rwy 19 opr consly.

AIRPORT REMARKS: Attended Mon-Sat 1330-2300Z†, Sun 1830-2300Z†.

Aerobatic activity invof arpt. Rwy 01 R tfc when aerobatic area active.

AIRPORT MANAGER: 731-885-1221**WEATHER DATA SOURCES:** AWOS-3 135.325 (731) 885-9161.**COMMUNICATIONS:** CTAF/UNICOM 122.7

Ⓡ MEMPHIS CENTER APP/DEP CON 133.65

CLEARANCE DELIVERY PHONE: For CD ctc Memphis ARTCC at

901-368-8453/8449.

RADIO AIDS TO NAVIGATION: NOTAM FILE MKL.

OBION NDB (MHW/LOM) 212 UC N36°17.86'

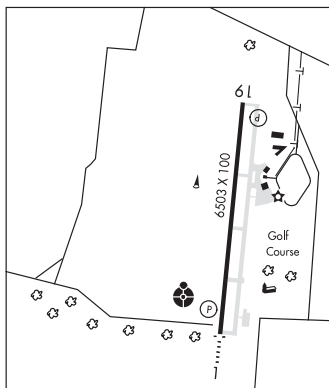
W88°59.69' 005° 4.9 NM to fld. 310/OE. NDB unmonitored.

DYERSBURG (L) TACAN Chan 115 DYR (116.8) N36°01.11'

W89°19.06' 034° 27.0 NM to fld. 389/3E. NOTAM FILE

DYR.

ILS 109.7 I-UCY Rwy 01. Class IE. LOM OBION NDB. LOC Monitored 1400-2300Z† at fbo.

**UPPER CUMBERLAND RGNL** (See SPARTA on page 455)**VOLUNTEER** N35°54.29' W83°53.68' NOTAM FILE TYS.ATLANTA
H-9B, 12G, L-25B

(H) (H) VORTACW 116.4 VVX Chan 111 224° 7.4 NM to Mc Ghee Tyson. 1315/3W.

WALTER HILL N35°57.67' W86°22.26' NOTAM FILE BNA.ATLANTA
L-16J

NDB (MHW) 371 FQW 186° 5.0 NM to Murfreesboro Muni. 554/2W.