

## MOBILE

**MOBILE INTL** (BFM)(KBFM) 3 S UTC-6(-5DT) N30°37.61' W88°04.09'

NEW ORLEANS

26 B LRA ARFF Index—See Remarks NOTAM FILE BFM

H-6K, 8G, L-21C, 22G

**RWY 14-32:** H9618X150 (ASPH-CONC-GRVD) S-75, D-185, 2D-325 PCN 72 F/B/X/T HIRL CL

IAP, AD

**RWY 14:** REIL. PAPI(P4L)—GA 3.0° TCH 68'. RVR-R Tree. Rgt tfc.

**RWY 32:** MALSR. TDZL. PAPI(P4L)—GA 3.0° TCH 71'. RVR-T

**RWY 18-36:** H7800X150 (ASPH-CONC) S-76, D-150, 2D-320 PCN 34 R/B/X/T MIRL

**RWY 18:** PAPI(P4L)—GA 3.0° TCH 64'. Pole.

**RWY 36:** PAPI(P4L)—GA 3.0° TCH 62'. Trees. Rgt tfc.

**SERVICE:** S4 FUEL 100LL, JET A, 2 LGT When twr clsd ACTIVATE MALSR Rwy 32—CTAF. HIRL Rwy 14-32 preset on step 3 or higher based on wx. Rwy 14-32 cntrin lgts avbl dur twr opr hrs only. Rwy 32 TDZL avbl dur twr opr hrs only.

**AIRPORT REMARKS:** Attended 1300-0500Z†. Conditions not monitored when ATCT clsd. Birds periodically on or invof arpt and incr in act dur inclement wx. Hot cargo space assigned to Twy A between Rwy 18-38 and A6. Class I, ARFF Index B. Arpt mntns ARFF Index B. Index C avbl upon req.

**AIRPORT MANAGER:** 251-639-4680

**WEATHER DATA SOURCES:** ASOS (251) 431-6762 LAWRS SAWRS.

**COMMUNICATIONS:** CTAF 118.8 ATIS 135.575 UNICOM 122.95

Ⓡ APP/DEP CON 118.5 (1200-0500Z†)

HOUSTON CENTER APP/DEP CON 127.65 (0500-1200Z†)

INTERNATIONAL TOWER 118.8 (1300-0100Z† Sun; 1300-0400Z† Mon, 0930-0400Z† Tue-Fri, 1000-0100Z† Sat)

GND CON 121.7

**CLEARANCE DELIVERY PHONE:** For CD when ATCT clsd ctc Mobile Apch at 251-662-6236. When Apch clsd ctc Houston ARTCC at 281-230-5622.

**AIRSPACE:** CLASS D svc 1300-0100Z† Sun, 1300-0400Z† Mon, 0930-0400Z† Tue-Fri, 1000-0100Z† Sat; other times CLASS G.

**RADIO AIDS TO NAVIGATION:** NOTAM FILE BFM.

**BROOKLEY (L) (L) VORTACW** 116.35 BFM Chan 110(Y) N30°36.76' W88°03.33' 318° 1.1 NM to fld. 12/4E.

VOR unusable:

265°-300° byd 23 NM blo 3,000'

TACAN unusable:

265°-300° byd 23 NM blo 3,000'

ILS/DME 108.5 I-RJ Chan 22 Rwy 32. Class IA. Unmonitored when ATCT clsd.

**MOBILE RGNL** (MOB)(KMOB) P (CG ARNG) 11 W UTC-6(-5DT) N30°41.49' W88°14.57'

NEW ORLEANS

219 B TPA—See Remarks LRA Class I, ARFF Index B NOTAM FILE MOB

H-6K, 8G, L-21C, 22G

**RWY 15-33:** H8502X150 (ASPH-GRVD) S-75, D-162, 2D-270,

IAP, AD

2D/2D2-550 PCN 55 F/D/W/U HIRL

**RWY 15:** MALSR. PAPI(P4L)—GA 3.0° TCH 50'. RVR-T

**RWY 33:** MALSR. PAPI(P4L)—GA 3.0° TCH 50'. RVR-T

**RWY 18-36:** H4376X150 (ASPH-GRVD) S-47, D-60, 2D-96

PCN 14 F/D/W/U MIRL

**RWY 18:** Tree.

**RWY 36:** Trees.

**SERVICE:** S4 FUEL 100LL, JET A, A+ OX 2, 4 LGT When ATCT clsd actvt MALSR Rwy 15 & 33—CTAF. PAPI Rwy 15 & 33 opr consly. HIRL Rwy 15-33 preset step 3 or hydr, based on wx conds.

**MILITARY—JASU** 4(NC-4 Equivalent) FUEL J4(Mil) A, A+ (C251-633-5000.) (NC-100LL) FLUID ADI LHOXRB OIL O-128-133-148-156(Mil)

**AIRPORT REMARKS:** Attended continuously. Conds not mntd when ATCT clsd. Rwy 18-36 CLOSED 0400-1300Z† expc for emerg opns.

TPA—hel/sngl srs Cat I 800 ft AGL, 1300 ft AGL fixed wing acft, ovhd 1800 ft AGL. Coast Guard; W apron, E apron. Rwy 18-36 not avbl for sked acr opns with more than 9 psgr seats or unsked acr at least 31 psgr seats. Ldg fee for non-scheduled coml acft over 65,000 lbs.

**AIRPORT MANAGER:** 251-639-4680

**WEATHER DATA SOURCES:** ASOS 124.75 (251) 607-0469. LLWAS.

**COMMUNICATIONS:** CTAF 118.3 ATIS 124.75 UNICOM 122.95

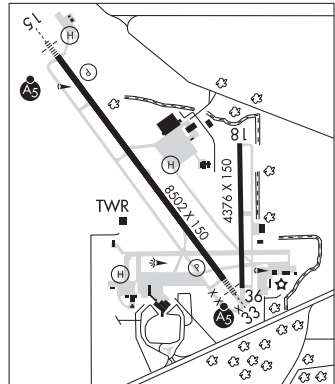
RCO 122.2 (ANNISTON RADIO)

Ⓡ MOBILE APP/DEP CON 118.5 (320°-139°) 121.0 (140°-319°) (1200-0500Z†)

HOUSTON CENTER APP/DEP CON 127.65 (0500-1200Z†)

MOBILE TOWER 118.3 (1200-0500Z†) GND CON 121.9 CLNC DEL 119.85

**CLEARANCE DELIVERY PHONE:** For CD if una to ctc on FSS freq, ctc Houston ARTCC at 281-230-5622.



CONTINUED ON NEXT PAGE

