

**MARYSVILLE**

**YUBA CO** (MYV)(KMYV) 3 SE UTC-8(-7DT) N39°05.87' W121°34.19'

64 B NOTAM FILE MYV

**RWY 14-32:** H6007X150 (ASPH) S-75, D-100, 2S-127, 2D-150

HIRL

**RWY 14:** MALSR. VASI(V4L)—GA 3.0° TCH 50'. Tree.

**RWY 32:** VASI(V4L)—GA 3.0° TCH 32'. Pole.

**RWY 05-23:** H3314X60 (ASPH) S-42, D-60, 2D-95

**RWY 05:** Railroad.

**RWY 23:** Tree.

**SERVICE:** S3 FUEL 100LL, JET A LGT ACTIVATE MALSR Rwy 14, VASI Rwy 14 and Rwy 32, HIRL Rwy 14-32—CTAF.

**AIRPORT REMARKS:** Attended 1400-0200Z±. Migratory flocks of waterfowl invof arpt during the spring and fall of the year. Rwy 23 +35' p-lines 900'-1050' from rwy end running 145' left to 210' rgt. All acft enter tfc pattern at 1000' AGL except turbine-powered or large airplanes at 1500' AGL. Rwy 05-23 asph sfc is in poor cond with raveling and spalling asph, and longl and lateral cracking. Rwy 05 and Rwy 23 mrkgs are faded.

**AIRPORT MANAGER:** 530-749-7800

**WEATHER DATA SOURCES:** ASOS 118.475 (530) 742-0695.

**COMMUNICATIONS:** CTAF/UNICOM 123.05

RCO 122.1R 122.6 110.8T (RANCHO MURIETA RADIO)

® NORCAL APP/DEP CON 125.4

**CLEARANCE DELIVERY PHONE:** For CD ctc NorCal Apch at 916-361-6874.

**AIRSPACE:** CLASS E.

**RADIO AIDS TO NAVIGATION:** NOTAM FILE MYV.

**MARYSVILLE (T) (T) VOR/DME** 110.8 MYV Chan 45 N39°05.92' W121°34.38' at fld. 62/16E.

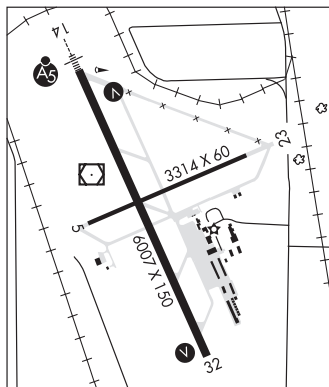
VOR unusable:

275°-295° byd 28 NM blo 6,000'

DME unusable:

275°-295° byd 28 NM blo 6,000'

ILS 110.5 I-MYV Rwy 14. Class IT. Unmonitored. Autopilot coupled apchs NA blw 695' (1.66 NM frm thld).



**SAN FRANCISCO**

H-3B, L-2G, 3A

IAP, AD

**MC CLELLAN AIRFIELD** (See SACRAMENTO on page 251)

**MC CLELLAN-PALOMAR** (See CARLSBAD on page 128)

**MEADOWS FLD** (See BAKERSFIELD on page 113)

**MEFFORD FLD** (See TULARE on page 295)

**MENDOCINO** N39°03.19' W123°16.46' NOTAM FILE UKI.

(VH) (H) VORTACW 112.3 ENI Chan 70 022° 5.5 NM to Ukiah Muni. 2985/16E.

**SAN FRANCISCO**

H-3A, L-2G