

CALIFORNIA

CONTINUED FROM PRECEDING PAGE

RADIO AIDS TO NAVIGATION: NOTAM FILE CRQ.

OCEANSIDE (VH) (H) VORTAC 115.3 OCN Chan 100 N33°14.44' W117°25.06' 021° 24.7 NM to fld. 52/15E.

VOR unusable:

028°-036° byd 40 NM
 039°-048° byd 40 NM
 049°-059° byd 40 NM blo 13,000'
 049°-059° byd 58 NM
 060°-099° byd 40 NM
 100°-114° byd 40 NM blo 7,000'
 100°-114° byd 61 NM
 216°-226° byd 40 NM
 227°-265° byd 20 NM
 305°-320° byd 40 NM
 330°-335° byd 40 NM
 337°-017° byd 40 NM

COMM/NAV/WEATHER REMARKS: March (RIV) provides Ground Control Approach (GCA) RADAR.

NAPA CO (APC)(KAPC) 5 S UTC-8(-7DT) N38°12.79' W122°16.84'

36 B NOTAM FILE APC MON Airport

SAN FRANCISCO

H-3B, L-2F, 3A, A

RWY 01L-19R: H5930X150 (ASPH-GRVD) S-102, D-134, 2D-120

PCN 41 F/D/X/T MIRL 0.3% up N

IAP, AD

RWY 01L: MALS.

RWY 19R: PAPI(P4L)—GA 3.25° TCH 52'. Rgt tfc.

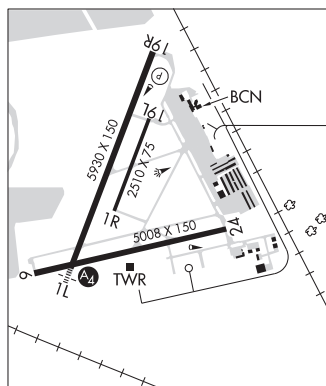
RWY 06-24: H5008X150 (CONC) S-60, D-76, 2D-120

PCN 21 R/C/W/T MIRL 0.4% up NE

RWY 06: REIL.

RWY 01R-19L: H2510X75 (ASPH) S-13.5 PCN 5 F/D/X/T 0.4% up N

RWY 01R: Rgt tfc.

**LAND AND HOLD-SHORT OPERATIONS**

LDG RWY	HOLD-SHORT POINT	AVBL LDG DIST
RWY 24	01L-19R	3700

SERVICE: S4 FUEL 100LL, JET A OX 3, 4 LGT When twr clsd
 ACTIVATE MALS Rwy 01L; REIL Rwy 06, MIRL Rwy 01L-19R and
 Rwy 06-24—CTAF. PAPI Rwy 19R opr continuously.

AIRPORT REMARKS: Attended 1500-0400Z†. For fuel svc 0500-1400Z†
 call 707-224-0887. Unlgt bridge 1 NM S, 167' AGL. Asph apron
 strength 12,500-30,000 lbs gross weight single wheel. Due to aprt
 proximity to wetlands birds on and invof the aprt year around with
 highest concentration of activity of birds on the rwys during rainy
 weather. Landing fee. Ldg fee chrgd to all air taxi, coml acft ops (exc fit instruction), and trans acft weighing more than
 12500 lbs.

AIRPORT MANAGER: 707-253-4300

WEATHER DATA SOURCES: ASOS (707) 252-7916

COMMUNICATIONS: CTAF 118.7 ATIS 124.05 707-255-2847 UNICOM 122.95

® OAKLAND CENTER APP/DEP CON 127.8 353.5

TOWER 118.7 (1500-0400Z†) GND CON 121.7 CLNC DEL 127.85

CLEARANCE DELIVERY PHONE: For CD when ATCT clsd ctc Oakland ARTCC at 510-745-3380.

AIRSPACE: CLASS D svc 1500-0400Z†; other times CLASS G.

RADIO AIDS TO NAVIGATION: NOTAM FILE APC.

SCAGGS ISLAND (VL) (H) VORTACW 112.1 SGD Chan 58 N38°10.76' W122°22.39' 048° 4.8 NM to fld. 5/17E.

VOR unusable:

064°-068° byd 40 NM
 082°-087° byd 40 NM
 098°-112° byd 40 NM blo 8,000'
 098°-112° byd 74 NM
 190°-239° byd 40 NM
 244°-257° byd 40 NM
 285°-303° byd 40 NM
 310°-331° byd 40 NM
 336°-045° byd 40 NM

ILS/DME 111.3 I-APC Chan 50 Rwy 01L. Class IE. LOC unmonitored when ATCT clsd. Glideslope unusable byd
 4° left and 7° right of course. Autopilot coupled apchs not applicable blw 530' MSL (1.3 NM from thld).

NAVAL BASE VENTURA CO (See POINT MUGU NAS (NAVAL BASE VENTURA CO) on page 238)