

**OAKLAND**

**SAN FRANCISCO BAY OAKLAND INTL** (OAK)(KOAK) 4 S UTC-8(-7DT) N37°43.28'

**SAN FRANCISCO**  
H-3B, L-2F, 3B, A  
IAP, AD

W122°13.27'  
9 B TPA—See Remarks LRA Class I, ARFF Index D NOTAM FILE OAK

**RWY 12-30:** H10520X150 (ASPH-GRVD) S-120, D-250, 2D-550, 2D/2D2-1120 PCR 1295 F/B/X/T HIRL CL  
**RWY 12:** MALS.R. PAPI(P4R)—GA 2.75° TCH 70'. RVR-TMR Rgt tfc.  
**RWY 30:** ALSF2. TD2L. PAPI(P4L)—GA 3.0° TCH 71'. RVR-TMR Thld dsplcd 114'.

**RWY 10R-28L:** H6213X150 (ASPH-GRVD) S-120, D-250, 2D-550, 2D/2D2-1120 PCR 934 F/B/X/T HIRL  
**RWY 10R:** REIL. PAPI(P4L)—GA 3.0° TCH 50'.  
**RWY 28L:** PAPI(P4R)—GA 3.0° TCH 50'.

**RWY 10L-28R:** H5457X150 (ASPH-GRVD) S-120, D-250, 2D-550, 2D/2D2-1120 PCR 1266 F/B/X/T HIRL  
**RWY 10L:** PAPI(P4R)—GA 3.0° TCH 50'. RVR-R  
**RWY 28R:** MALS.R. PAPI(P4L)—GA 3.0° TCH 51'. RVR-T Bldg. Rgt tfc.

**RWY 15-33:** H3376X75 (ASPH) S-12.5, D-65, 2D-100 MIRL  
**RWY 33:** Rgt tfc.

**RUNWAY DECLARED DISTANCE INFORMATION**

**RWY 10L:**TORA-5457 TODA-5457 ASDA-5336 LDA-5336  
**RWY 10R:**TORA-6213 TODA-6213 ASDA-6213 LDA-6213  
**RWY 12:** TORA-10000 TODA-10000 ASDA-10000 LDA-10000  
**RWY 28L:**TORA-6213 TODA-6213 ASDA-6213 LDA-6213  
**RWY 28R:**TORA-5457 TODA-5457 ASDA-5457 LDA-5457  
**RWY 30:** TORA-10000 TODA-10000 ASDA-10000 LDA-10000

**ARRESTING GEAR/SYSTEM**

**RWY 28L:** EMAS

**SERVICE:** S4 FUEL 100LL, JET A OX 1, 2, 3, 4

**NOISE:** 24 hr Noise abatement procedure—turbojet and turbofan powered acft, turboprops over 17,000 lbs, four engine reciprocating powered acft, and surplus Military acft over 12,500 lbs should not depart Rwy 28L and Rwy 28R or land on Rwy 10R and Rwy 10L. For noise abatement info ctc noise abatement office at 510-563-6463. Noise abatement procedures not applicable in emerg or whenever Rwy 12-30 is closed due to maintenance, safety, winds or weather.

**AIRPORT REMARKS:** Attended continuously. Rwy 15-33 CLOSED to air carrier acft. Birds on and in/ovf arpt. Ops superintendent 510-563-6432, cell 510-715-6286, 24 hour ops 510-563-3361. Acft with experimental or limited certification having over 1,000 horsepower or 4,000 pounds are restricted to Rwy 12-30. TPA—Rwy 28L 606(597), TPA—Rwy 28R 1006(997). Rwy 15-33 not avbl for sked acr opns with more than 9 psgr seats or unsked acr at least 31 psgr seats. Twy A, Twy E, Twy G, Twy H between Rwy 28R and Twy C max acft weight 100,000 lbs. Twy G and Twy H between Rwy 28L and Rwy 28R, max acft weight 12,500 lbs. Twy P max acft weight 161,000 lbs single; 190,000 lbs dual; 305,000 lbs dual tandem; 735,000 lbs double dual tandem. Twy C between Rwy 28R and Twy G and Twy B, Twy J, and Twy D max acft weight 861,000 lbs. Twy C between Twy G and Twy J max acft weight 90,000 lbs single; 144,000 lbs dual; 257,000 lbs tandem. Twy C between Twy J and Twy F max acft weight 76,000 lbs single, 115,000 lbs dual; 257,000 lbs tandem (dual tandem not authorized). Twy K btn Twy D and int Twys F, L, K max acft weight 56,000 lbs single; 70,000 lbs dual; 130,000 lbs tandem. Twy K btn Twy J and int Twys F, L, K max acft weight 33,000 lbs single; 45,000 lbs dual; tandem na. Preferential rwy use program in effect 0600-1400Z†. North fld preferred arrival Rwy 28L, north fld preferred departure Rwys 10R or 28R. If these Rwys unacceptable for safety or twr instruction then Rwy 12-30 must be used. 400' by 220' blast pad Rwy 12 and Rwy 30. Rwys 30, 28R and 28L distance remaining signs left side. 100' lgtd microwave antenna twr located 1320' wsw of OAK VORTAC, south of upwind end of Rwy 28L. 100' lgtd microwave antenna twr located west-southwest of OAK VORTAC, south of upwind end of Rwy 28L. Underlies Class B asp, be aware of speeds on arr and dep. Fee in effect 24 hrs/day, ctc afd ops 510-563-3361. Flight Notification Service (ADCUS) avbl.

**AIRPORT MANAGER:** 510-563-6436

**WEATHER DATA SOURCES:** ASOS (510) 214-1776

**COMMUNICATIONS:** D-ATIS 133.775 (510) 635-5850 UNICOM 122.95

OAKLAND RCO 122.5 (OAKLAND RADIO)

Ⓡ NORCAL APP CON 128.325 125.35 (East and Rwy 28L/R) 135.1 (West) 133.95 134.5

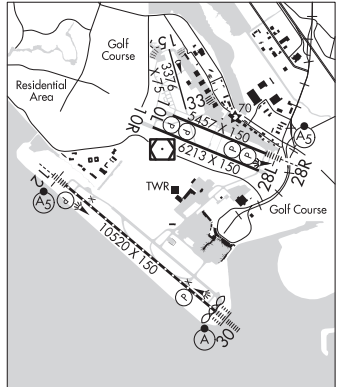
Ⓡ NORCAL DEP CON 120.9 (Northwest) 135.1 (West)

OAKLAND TOWER 118.3 (Rwy 10L-28R, Rwy 10R-28L, Rwy 15-33) 127.2 (Rwy 12-30) 124.9

GND CON 121.75 (Rwy 12-30) 121.9 (Rwy 10L-28R, Rwy 10R-28L, Rwy 15-33) CLNC DEL 121.1

CPDLC (LOGON KUSA)

PDC



CONTINUED ON NEXT PAGE

## CONTINUED FROM PRECEDING PAGE

AIRSPACE: CLASS C svc ctc APP CON.

RADIO AIDS TO NAVIGATION: NOTAM FILE OAK.

OAKLAND (VH) (DH) VORW/DME 116.8 OAK Chan 115 N37°43.56' W122°13.42' at fld. 13/17E.

DME unusable:

340°-040° byd 30 NM blo 8,000'

VOR unusable:

116°-126° byd 105 NM

116°-126° byd 40 NM blo 5,000'

116°-126° byd 52 NM blo 12,000'

130°-140° byd 40 NM blo 14,000'

130°-140° byd 55 NM

146°-156° byd 40 NM blo 7,000'

146°-156° byd 49 NM blo 11,000'

146°-156° byd 83 NM

157°-183° byd 40 NM

198°-213° byd 40 NM

214°-224° byd 40 NM blo 14,000'

214°-224° byd 65 NM

230°-240° byd 40 NM blo 14,500'

230°-240° byd 85 NM

241°-250° byd 40 NM

251°-263° byd 40 NM blo 31,000'

275°-298° byd 40 NM

314°-320° byd 40 NM

338°-352° byd 40 NM blo 18,000'

338°-352° byd 40 NM blo 8,500'

353°-115° byd 40 NM

ILS 111.9 I-AAZ Rwy 12. Class IE. Rwy 12 glideslope deviations are psbl when critical areas are not rqrd to be protected. Acft opreg in vcnty of glideslope trans. LOC unusable byd 30° right of course.

ILS 109.9 I-OAK Rwy 28R. Class IE.

ILS/DME 108.7 I-INB Chan 24 Rwy 30. Class IIIE.

OAKLAND N37°43.56' W122°13.42' NOTAM FILE OAK.

SAN FRANCISCO

(VH) (DH) VORW/DME 116.8 OAK Chan 115 at San Francisco Bay Oakland Intl. 13/17E.

H-3A, L-2F, 3B, A

DME unusable:

340°-040° byd 30 NM blo 8,000'

VOR unusable:

116°-126° byd 105 NM

116°-126° byd 40 NM blo 5,000'

116°-126° byd 52 NM blo 12,000'

130°-140° byd 40 NM blo 14,000'

130°-140° byd 55 NM

146°-156° byd 40 NM blo 7,000'

146°-156° byd 49 NM blo 11,000'

146°-156° byd 83 NM

157°-183° byd 40 NM

198°-213° byd 40 NM

214°-224° byd 40 NM blo 14,000'

214°-224° byd 65 NM

230°-240° byd 40 NM blo 14,500'

230°-240° byd 85 NM

241°-250° byd 40 NM

251°-263° byd 40 NM blo 31,000'

275°-298° byd 40 NM

314°-320° byd 40 NM

338°-352° byd 40 NM blo 18,000'

338°-352° byd 40 NM blo 8,500'

353°-115° byd 40 NM

RCO 122.5 (OAKLAND RADIO)

OCEAN RIDGE (See GUALALA on page 165)