

CONTINUED FROM PRECEDING PAGE

CLEARANCE DELIVERY PHONE: For CD ctc NorCal Apch at 916-361-0596.

RADIO AIDS TO NAVIGATION: NOTAM FILE RNO.

MUSTANG (VH) (H) VORTACW 117.9 FMEG Chan 126 N39°31.88' W119°39.36' 293° 13.1 NM to fld. 5950/16E.

VOR unusable:

002°-012° byd 40 NM blo 19,000'
 013°-022° byd 40 NM blo 10,300'
 013°-022° byd 53 NM
 023°-045° byd 40 NM
 079°-113° byd 40 NM
 114°-124° byd 40 NM blo 10,000'
 114°-124° byd 52 NM
 125°-145° byd 40 NM
 153°-172° byd 40 NM blo 15,000'
 153°-172° byd 52 NM blo 18,000'
 173°-186° byd 40 NM
 187°-197° byd 40 NM blo 15,000'
 187°-197° byd 66 NM
 198°-212° byd 40 NM
 200°-230° byd 30 NM blo 13,000'
 213°-223° byd 40 NM blo 18,000'
 224°-304° byd 40 NM
 327°-339° byd 40 NM blo 18,000'
 356°-001° byd 40 NM

TACAN AZIMUTH unusable:

200°-230° byd 30 NM blo 13,000'

DME unusable:

200°-230° byd 30 NM blo 13,000'

ILS/DME 111.9 I-RTS Chan 56 Rwy 32. Class IT.

RENO/TAHOE INTL (RNO)(KRNO) P (ANG) 3 SE UTC-8(-7DT) N39°29.95' W119°46.09'

SAN FRANCISCO

4415 B TPA—See Remarks LRA Class I, ARFF Index C NOTAM FILE RNO

H-3B, L-9A

RWY 17R-35L: H11001X150 (CONC-GRVD) S-75, D-185, 2D-350,
 2D/2D2-850 PCN 88 R/B/W/T HIRL CL

IAP, AD

RWY 17R: MALSR. PAPI(P4L)—GA 3.06° TCH 77'. RVR-T Thld dsplcd 1000'.

RWY 35L: MALSR. PAPI(P4L)—GA 3.54° TCH 72'. RVR-R Thld dsplcd 990'. Ground.

RWY 17L-35R: H9000X150 (CONC-GRVD) S-75, D-209, 2D-407,
 2D/2D2-850 PCN 88 R/B/W/T HIRL CL

RWY 17L: REIL. PAPI(P4L)—GA 3.0° TCH 75'.

RWY 35R: REIL. PAPI(P4L)—GA 3.35° TCH 75'.

RWY 08-26: H6102X150 (CONC-GRVD) S-60, D-170, 2D-260
 PCN 72 R/B/W/T MIRL

RWY 08: REIL. PAPI(P4L)—GA 3.2° TCH 48'. Pole.

RWY 26: REIL. PAPI(P4L)—GA 3.0° TCH 45'. Tree.

RUNWAY DECLARED DISTANCE INFORMATION

RWY 08: TORA-5854 TODA-5854 ASDA-6102 LDA-5854

RWY 17L: TORA-9000 TODA-9000 ASDA-9000 LDA-9000

RWY 17R: TORA-11001 TODA-11001 ASDA-11001 LDA-10001

RWY 26: TORA-6102 TODA-6102 ASDA-6102 LDA-6102

RWY 35L: TORA-11001 TODA-11001 ASDA-11001 LDA-10011

RWY 35R: TORA-9000 TODA-9000 ASDA-9000 LDA-9000

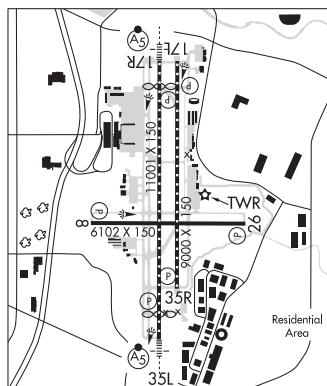
SERVICE: S4 FUEL 100LL, JET A1+ OX 1, 2, 3, 4 **MILITARY—FUEL A, A+ (C775-858-7300.)** (NC-100LL, A1+)

NOISE: Noise sensitive area all quadrants. All compl acft ctd gnd ctl for advisories prior to push back on the terminal ramp.

Pilots of turbojet acft use recommended NS ABTMT procedures, avbl on req. Pilots of non-turbojet acft use best abatement procedures and settings. Avoid as much as feasible flying over populated areas.

AIRPORT REMARKS: Attended continuously. Intsv glider activity in/ov arpt and surrounding areas up to 18000'. Waterfowl all quadrants all seasons. Concentrated NW of Rwy 17R and East of Rwy 17L. Twy M clsd to air carrier acft. Twy J east of Rwy 16L-34R clsd to air carrier acft. Twy A btn N Twy B and Twy D clsd to acft with wingspan greater than 149'. Twy C btn Twy L and Twy D rstrd to acft 100,000 lbs or less. Twy C btn Twy L and Twy D clsd to air carrier acft.

TPA—5215(800) singl eng, 5415(1000) mult eng/turboprop/jet. Acft over 12500 lbs: written PPR for trng flights; for more info ctc arpt ops 1-775-328-6490. 24 hrs PPR for tran acft parking with wingspan greater than 75'. Ldg rights arpt, PPR-call 775-784-5585; aft hrs ldg wo prior apvl not authorized. Glider/soaring ops 30-50 miles South of arpt dur VFR wx and mountain wave wind cond 1900Z± to SS. ANG: COMSEC mtrl storage avbl with prior cdm at 152 CF/SCXS, DSN 830-4798. Flight Notification Service (ADCUS) avbl. Cold temperature airport. Altitude correction required at or below -13C. NOTE: See Special Notices—Glider/Soaring Activities around the Reno-Tahoe Intl Arpt. See Special Notices—Arrival Alert.



CONTINUED ON NEXT PAGE

SW, 5 SEP 2024 to 31 OCT 2024

CONTINUED FROM PRECEDING PAGE

AIRPORT MANAGER: 775-328-6550

WEATHER DATA SOURCES: ASOS 135.8 (775) 324-6659.

COMMUNICATIONS: D-ATIS 135.8 775-348-1550 UNICOM 122.95

RCO 122.2 122.5 (RENO RADIO)

® NORCAL APP/DEP CON 119.2 (036°-225°) 126.3 (226°-035°)

TOWER 118.7 GND CON 121.9 CLNC DEL 124.9

CPDLC (LOGON KUSA)

PDC

AIRSPACE: CLASS C svc ctc APP CON.

RADIO AIDS TO NAVIGATION: NOTAM FILE RNO.

MUSTANG (VH) (H) VORTACW 117.9 FMG Chan 126 N39°31.88' W119°39.36' 234° 5.5 NM to fld. 5950/16E.

VOR unusable:

002°-012° byd 40 NM blo 19,000'

013°-022° byd 40 NM blo 10,300'

013°-022° byd 53 NM

023°-045° byd 40 NM

079°-113° byd 40 NM

114°-124° byd 40 NM blo 10,000'

114°-124° byd 52 NM

125°-145° byd 40 NM

153°-172° byd 40 NM blo 15,000'

153°-172° byd 52 NM blo 18,000'

173°-186° byd 40 NM

187°-197° byd 40 NM blo 15,000'

187°-197° byd 66 NM

198°-212° byd 40 NM

200°-230° byd 30 NM blo 13,000'

213°-223° byd 40 NM blo 18,000'

224°-304° byd 40 NM

327°-339° byd 40 NM blo 18,000'

356°-001° byd 40 NM

TACAN AZIMUTH unusable:

200°-230° byd 30 NM blo 13,000'

DME unusable:

200°-230° byd 30 NM blo 13,000'

ILS/DME 110.9 I-RNO Chan 46 Rwy 17R. Class ID. Localizer backcourse unusable byd 20° left of course; byd 30° right of course.

ILS/DME 109.9 I-AGY Chan 36 Rwy 35L. Class IE. LOC unusable abv 6,400' at thld; within 3.6 NM abv 8,500'.

SPANISH SPRINGS (N86) 10 N UTC-8(-7DT) N39°40.27' W119°43.51'

SAN FRANCISCO

4620 NOTAM FILE RNO

RWY 17-35: 3418X60 (DIRT) RWY LGTS(NSTD)

RWY 35: Bldg. Rgt t/c.

AIRPORT REMARKS: Unattended. Arpt CLOSED indefinitely. Rwy 17-35 clsd indefly. Marked with yellow X's at each end. Rwy 17-35 hazardous when wet. No line of site between ends of rwy. Mountains West and North. Uncontrolled vehicle access across rwys. Rwy 17 gradient 2.5% first 500'. Rwy 17-35 thresholds marked with 4 white cement pads flush to the ground. Rwy edge marked with reflectors. Rwy 17-35 rwy lgts NSTD. Rising terrain at rwy edges narrowing primary sfc at center of rwy. Par twy clsd indef.

AIRPORT MANAGER: 775-772-8049

COMMUNICATIONS: CTAF 122.9

CLEARANCE DELIVERY PHONE: For CD ctc NorCal Apm at 916-361-0596.

ROSASCHI AIR PARK (See SMITH on page 414)-----
SAMSARG FLD (See FERNLEY on page 388)
