

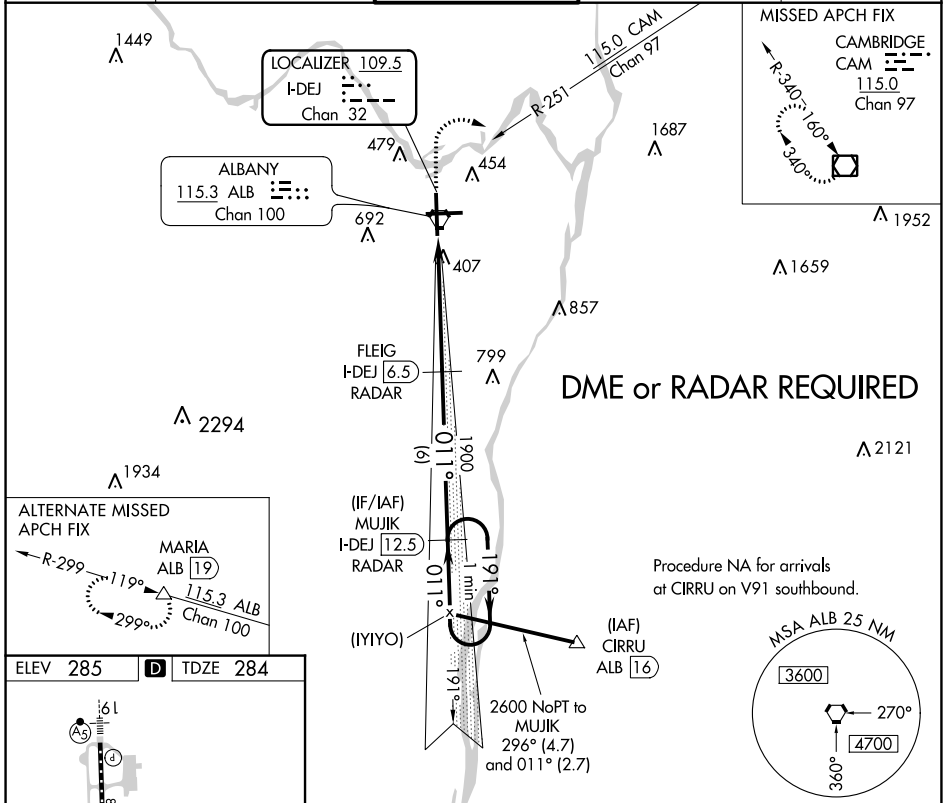
LOC/DME I-DEJ <b>109.5</b> Chan 32	APP CRS <b>011°</b>	Rwy Idg TDZE Apt Elev	<b>8500</b> <b>284</b> <b>285</b>
--	------------------------	-----------------------------	---

# ILS RWY 1 (SA CAT II)

ALBANY INTL (ALB)

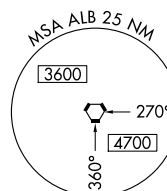
DME or RADAR required. Reduced Lighting: Requires specific OPSPEC, MSPEC, or LOA approval and use of autoland or HUD to touchdown.	MALSR 	MISSED APPROACH: Climb to 800 then climbing right turn to 5000 and on CAM VOR/DME R-251 to CAM VOR/DME and hold.
--	-----------	--

D-ATIS <b>120.45</b>	ALBANY APP CON <b>132.825 307.2</b>	ALBANY TOWER <b>119.5 257.8</b>	GND CON <b>121.7 348.6</b>	CLNC DEL <b>127.50</b>
-------------------------	--	------------------------------------	-------------------------------	---------------------------

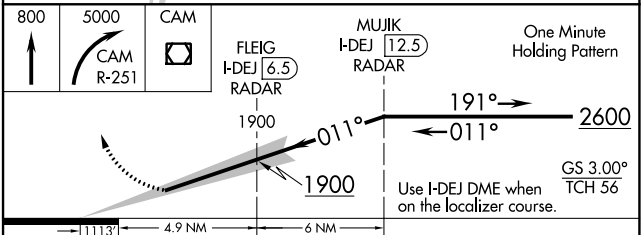
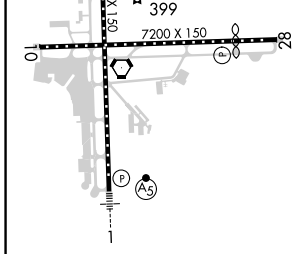


**DME or RADAR REQUIRED**

Procedure NA for arrivals at CIRRU on V91 southbound.



ELEV 285	<b>D</b>	TDZE 284
----------	----------	----------



CATEGORY	A	B	C	D
S-ILS 1	RA 100/12 100 DA 384			

**SA CATEGORY II ILS - SPECIAL AIRCREW & AIRCRAFT CERTIFICATION REQUIRED**

TDZ/CL Rwy 1  
HIRL Rwy 1-19  
MIRL Rwy 10-28  
REIL Rwy 10 and 28

NE-2, 05 SEP 2024 to 03 OCT 2024

NE-2, 05 SEP 2024 to 03 OCT 2024