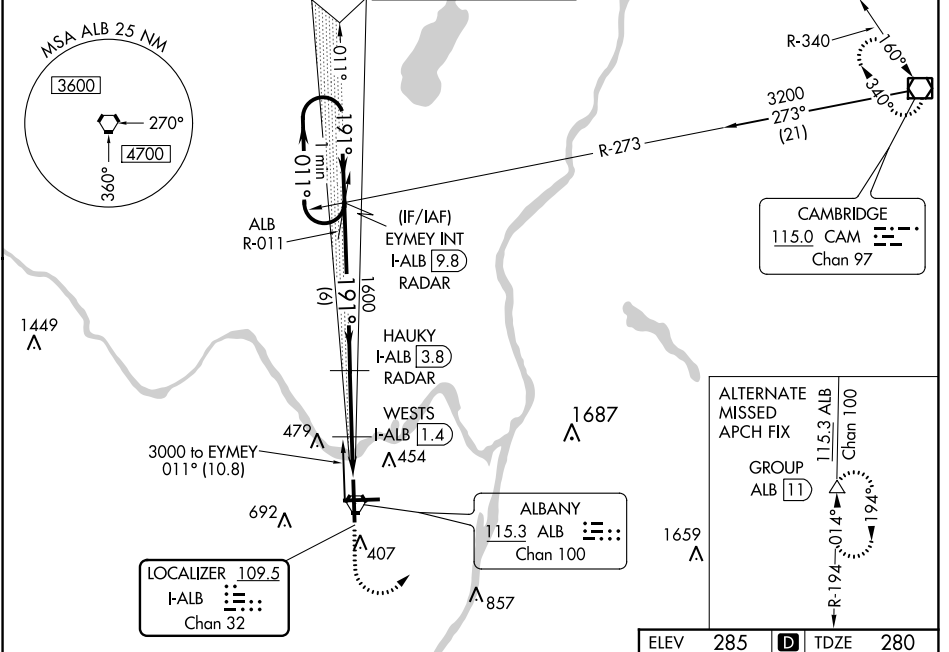


LOC/DME I-ALB <b>109.5</b> Chan <b>32</b>	APP CRS <b>191°</b>	Rwy Idg <b>8500</b> TDZE <b>280</b> Apt Elev <b>285</b>
---	------------------------	---

# ILS or LOC RWY 19

ALBANY INTL (ALB)

<p>Circling NA west of Rwy 1-19. Circling Rwy 10 NA at night. DME or RADAR required.</p>	<p>MALS/R</p>	<p>MISSED APPROACH: Climb to 2000 then climbing left turn to 5000 direct CAM VOR/DME and hold.</p>		
			D-ATIS <b>120.45</b>	ALBANY APP CON <b>132.825 307.2</b>



NE-2, 05 SEP 2024 to 03 OCT 2024

NE-2, 05 SEP 2024 to 03 OCT 2024

One Minute Holding Pattern		EYMEY INT I-ALB 9.8 RADAR	HAUKY I-ALB 3.8 RADAR	WESTS I-ALB 1.4	*I-ALB 0.7	2000	5000	CAM		
GS 3.00° TCH 54		Use I-ALB DME when on the localizer course.		*LOC only.						
CATEGORY	A	B	C	D						
S-ILS 19	480/18 200 (200-½)									
S-LOC 19	820/24	540 (600-½)	820/55	540 (600-1)						
CIRCLING	820-1	535 (600-1)	860-1½ 575 (600-1½)	960-2¼ 675 (700-2¼)						
WESTS FIX MINIMUMS										
S-LOC 19	620/24	340 (400-½)	620/26	340 (400-½)						
CIRCLING	820-1	535 (600-1)	820-1½ 535 (600-1½)	960-2¼ 675 (700-2¼)						
					Knots	60	90	120	150	180
					Min:Sec	4:00	2:40	2:00	1:36	1:20

