


LOC I-AMA <b>110.3</b>	APP CRS <b>038°</b>	Rwy Idg <b>13502</b>
		TDZE <b>3607</b>
		Apt Elev <b>3607</b>

# ILS or LOC RWY 4

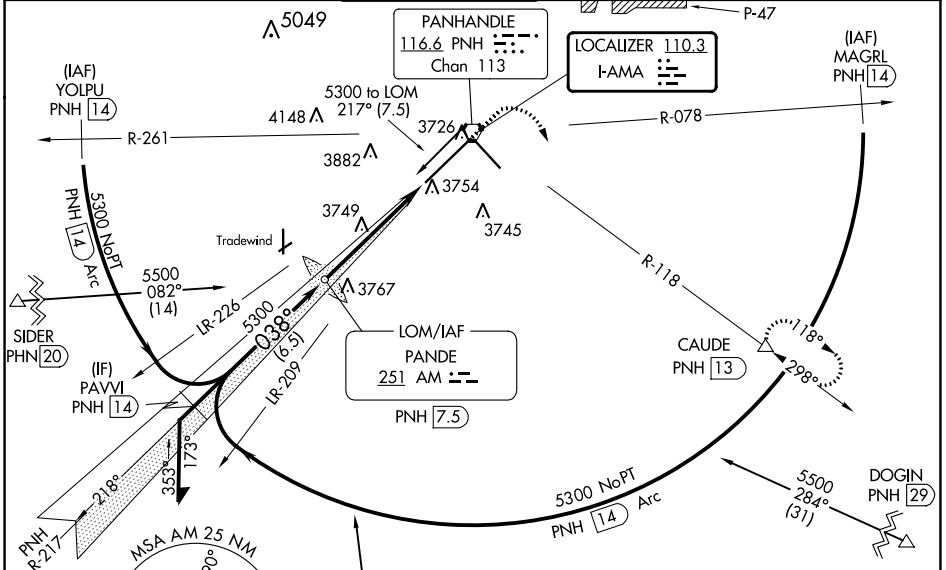
RICK HUSBAND AMARILLO INTL (AMA)

ADF or DME required.

**⚠** When local altimeter setting not received, use Borger altimeter setting and increase S-ILS 4 DA to 3960 feet and all visibilities to RVR 3000. Increase all MDAs 160 feet and S-LOC 4 visibility Cat C/D/E to RVR 6000 and Circling visibility Cat C/D ½ SM. For inop ALS, increase visibility S-ILS 4 Cat E to 4000 RVR and S-LOC 4 Cat C/D/E to RVR 6000. For inop ALS when using Borger altimeter setting, increase visibility S-ILS 4 all Cats to 5500 and S-LOC 4 Cat C/D/E to 1½ SM. \* RVR 1800 authorized with use of FD or AP or HUD to DA (NA when using Borger altimeter setting).

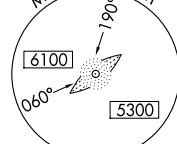
**MALS**  
  
**MISSED APPROACH:**  
 Climb to 4100 then climbing right turn to 5000 on PNH VORTAC R-118 to CAUDE/PNH 13 DME and hold.

ATIS <b>118.85 350.3</b>	AMARILLO APP CON* <b>119.5 307.0</b>	AMARILLO TOWER* <b>118.3(CTAF) 257.9</b>	GND CON <b>121.9 348.6</b>	CLNC DEL <b>121.65 239.275</b>	UNICOM <b>122.95</b>
-----------------------------	---	---	-------------------------------	-----------------------------------	-------------------------

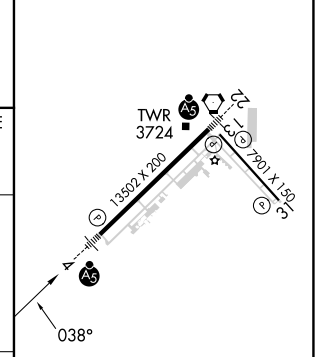
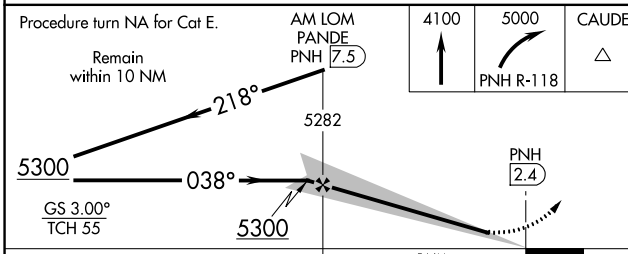


SC-2, 05 SEP 2024 to 03 OCT 2024

SC-2, 05 SEP 2024 to 03 OCT 2024



ELEV 3607	<b>D</b> TDZE 3607
-----------	--------------------



CATEGORY	A	B	C	D	E	
S-ILS 4*	3807/24 200 (200-½)					
S-LOC 4	4000/24	393 (400-½)	4000/35	393 (400-¾)		
<b>C</b> CIRCLING	4080-1	473 (500-1)	4240-1¾ 633 (700-1¾)	4280-2¼ 673 (700-2¼)	4460-3 853 (900-3)	
						REIL Rwy 13 HIRL Rws 4-22 and 13-31
						FAF to MAP 5 NM
						Knots 60 90 120 150 180 Min:Sec 5:00 3:20 2:30 2:00 1:40