

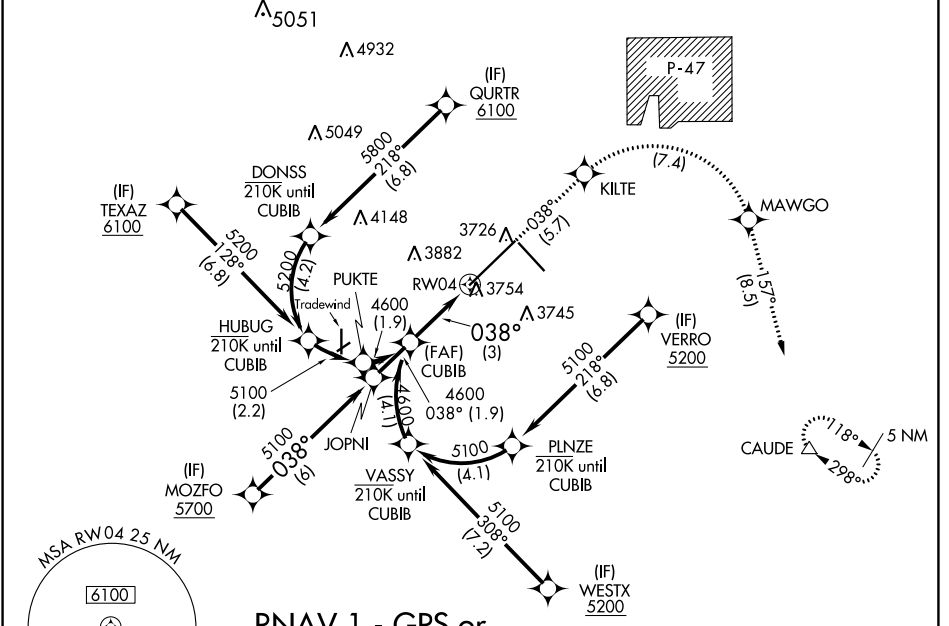
APP CRS	Rwy Idg	<b>13502</b>
<b>038°</b>	TDZE	<b>3607</b>
	Apt Elev	<b>3607</b>

# RNAV (RNP) Z RWY 4

RICK HUSBAND AMARILLO INTL (AMA)

ASR	For uncompensated Baro-VNAV systems, procedure NA below -14°C (7°F) or above 53°C (128°F). RF required. GPS required. For inop ALS, increase RNP 0.30 all Cats visibility to 1 1/2 SM.	MALSRL	MISSED APPROACH: (Do not exceed 185K until MAWGO) Climb to 5400 on track 038° to KILTE, right turn to MAWGO, then track 157° to CAUDE and hold.

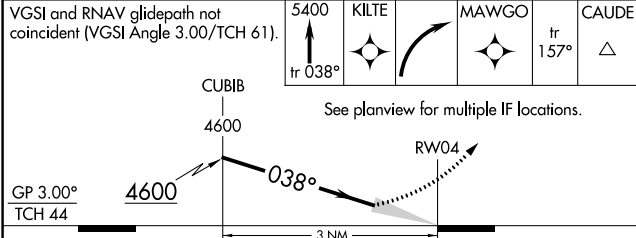
ATIS	AMARILLO APP CON*	AMARILLO TOWER*	GND CON	CLNC DEL	UNICOM
<b>118.85 350.3</b>	<b>119.5 307.0</b>	<b>118.3(CTAF) 0 257.9</b>	<b>121.9 348.6</b>	<b>121.65 239.275</b>	<b>122.95</b>



SC-2, 05 SEP 2024 to 03 OCT 2024

SC-2, 05 SEP 2024 to 03 OCT 2024

ELEV 3607	<b>D</b>	TDZE 3607
-----------	----------	-----------



CATEGORY	A	B	C	D
RNP 0.12 DA		3969/40	362 (400-3/4)	
RNP 0.30 DA		4019/50	412 (500-1)	

**AUTHORIZATION REQUIRED**

