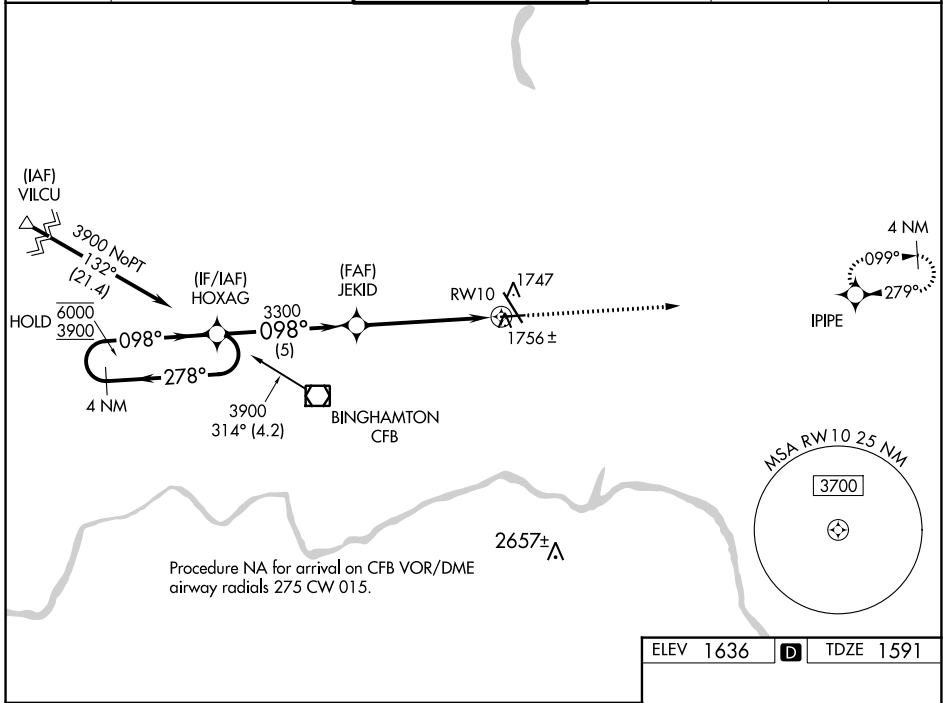


WAAS CH 93820 W10A	APP CRS 098°	Rwy Idg TDZE Apt Elev	5001 1591 1636
--	------------------------	-----------------------------	---

RNAV (GPS) RWY 10

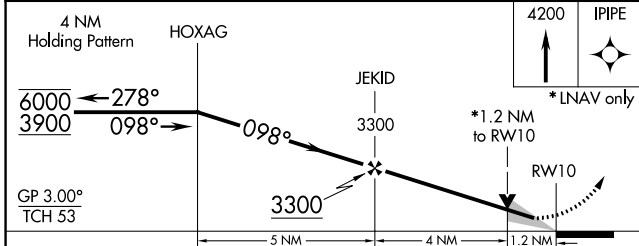
GREATER BINGHAMTON/EDWIN A LINK FLD (BGM)

RNP APCH. ▼ For uncompensated Baro-VNAV systems, ▲ LNAV/VNAV NA below -21°C or above 54°C.		MISSED APPROACH: Climb to 4200 direct IPIPE and hold.			
ATIS 128.15	BINGHAMTON APP CON * 118.6 257.625	BINGHAMTON TOWER * 119.3 (CTAF) 0 239.25	GND CON 121.9	CLNC DEL 125.05	UNICOM 122.95



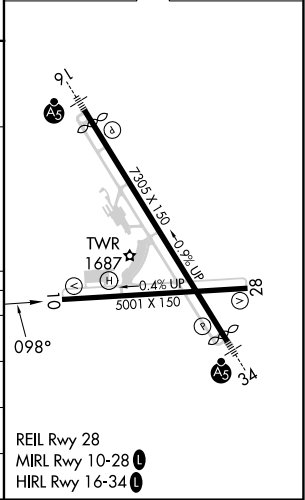
NE-2, 05 SEP 2024 to 03 OCT 2024

NE-2, 05 SEP 2024 to 03 OCT 2024



ELEV 1636	D	TDZE 1591
-----------	---	-----------

CATEGORY	A	B	C	D
LPV DA		1841-3/4	250 (300-3/4)	
LNAV/VNAV DA		1937-1	346 (400-1)	
LNAV MDA	2020-1	429 (400-1)	2020-1 1/4	429 (400-1 1/4)
CIRCLING	2120-1	484 (500-1)	2120-1 1/2	2200-2 564 (600-2)



REIL Rwy 28
MIRL Rwy 10-28
HIRL Rwy 16-34