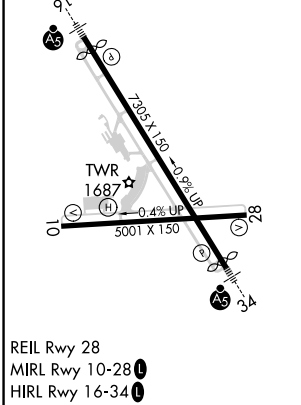
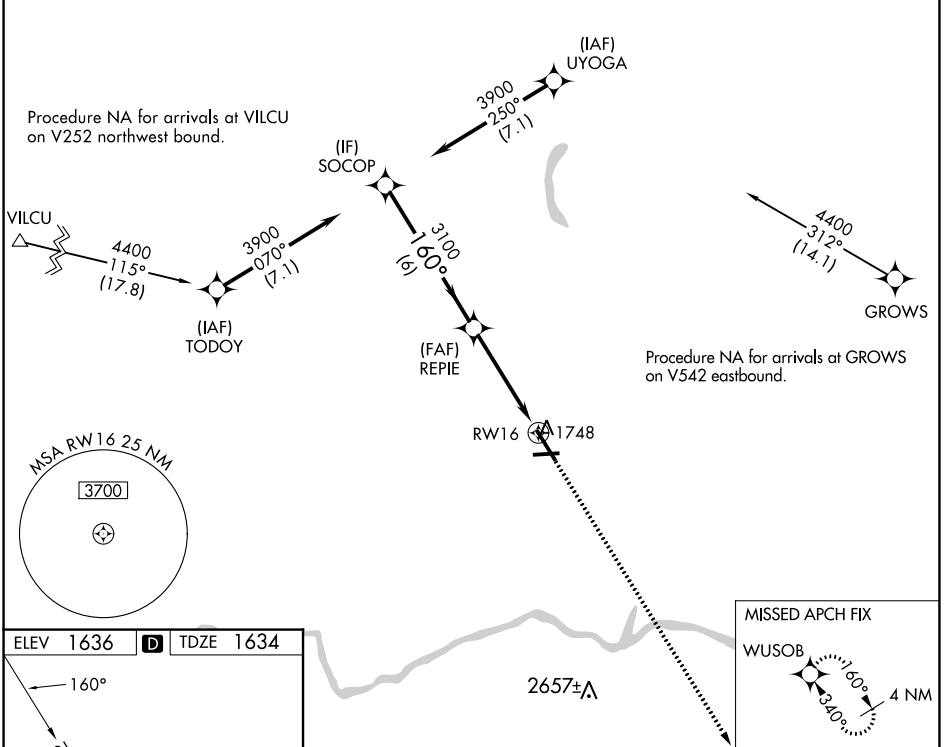


| | | |
|--|------------------------|---|
| WAAS CH 66015 W16A | APP CRS 160° | Rwy ldg 6905 TDZE 1634 Apt Elev 1636 |
|--|------------------------|---|

RNAV (GPS) RWY 16

GREATER BINGHAMTON/EDWIN A LINK FLD (BGM)

| | | | | | |
|--|--|--|-------------------------|---------------------------|---|
| RNP APCH. | | | | MALSRR | MISSED APPROACH: Climb to 4000 direct WUSOB and hold. |
| <p>▲ For uncompensated Baro-VNAV systems, LNAV/VNAV NA below -21°C or above 54°C. For inop ALS, increase LNAV/VNAV all Cats visibility to RVR 5500.</p> | | | | | |
| ATIS 128.15 | BINGHAMTON APP CON * 118.6 257.625 | BINGHAMTON TOWER * 119.3 (CTAF) 239.25 | GND CON 121.9 | CLNC DEL 125.05 | UNICOM 122.95 |



| | | | | | |
|-------------------|--|---------|---------------|-----------------|---------------|
| SOCOP | | REPIE | | RWY 16 | |
| 3900 | | 3100 | | 4000 | |
| 160° | | 160° | | 3.00° | |
| GP 3.00° | | TCH 52 | | WUSOB | |
| 6 NM | | 3.3 NM | | 1.1 NM | |
| CATEGORY | | A | B | C | D |
| LPV DA | | 1884/24 | | 250 (300-1/2) | |
| LNAV/VNAV DA | | 1984/30 | | 350 (400-3/8) | |
| LNAV MDA | | 2060/24 | 426 (500-1/2) | 2060/40 | 426 (500-3/4) |
| C CIRCLING | | 2120-1 | 484 (500-1) | 2120-1 1/2 | 2200-2 |
| | | | | 484 (500-1 1/2) | 564 (600-2) |

NE-2, 05 SEP 2024 to 03 OCT 2024

NE-2, 05 SEP 2024 to 03 OCT 2024