

WAAS CH **93915** APP CRS **340°** Rwy Idg **7100**  
 TDZE **1600**  
 W34A Apt Elev **1636**

**RNAV (GPS) RWY 34**  
 GREATER BINGHAMTON/EDWIN A LINK FLD (BGM)

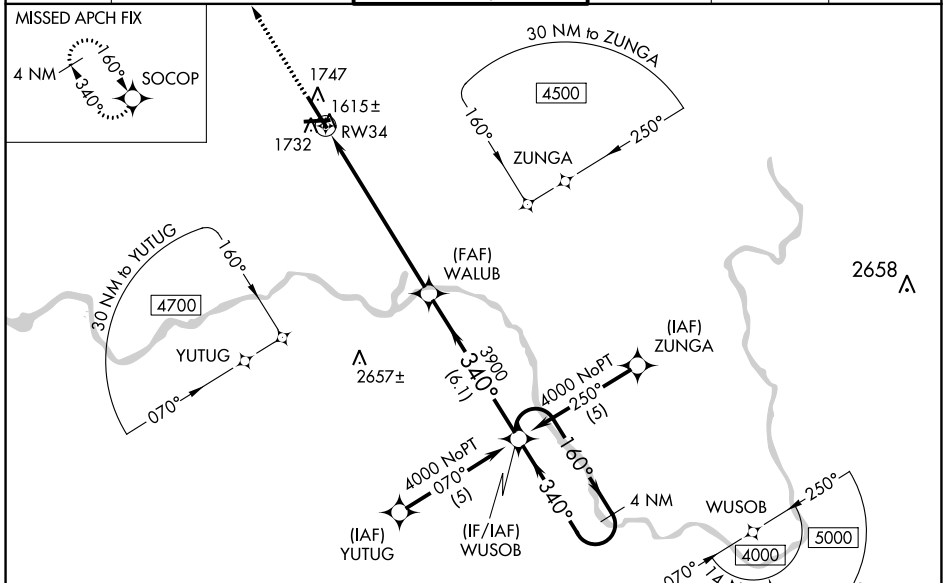
RNP APCH.

**▼** For uncompensated Baro-VNAV systems, LNAV/VNAV NA below -18°C (0°F) or above 46°C (114°F). When local altimeter setting not received, use Ithaca altimeter setting and increase all DA 138 feet and all MDA 140 feet, increase LPV all Cats, LNAV Cats C and D and Circling Cat C and D visibility ½ SM, and LNAV/VNAV all Cats visibility ½ SM. For inoperative MALSR when using Ithaca altimeter setting increase LPV all Cats visibility to RVR 6000. Baro-VNAV and VDP NA when using Ithaca altimeter setting.



**MISSED APPROACH:**  
 Climb to 3900 direct SOCOP and hold.

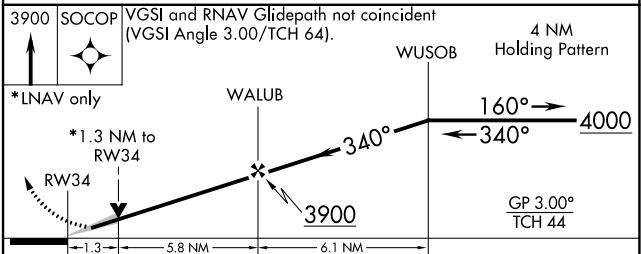
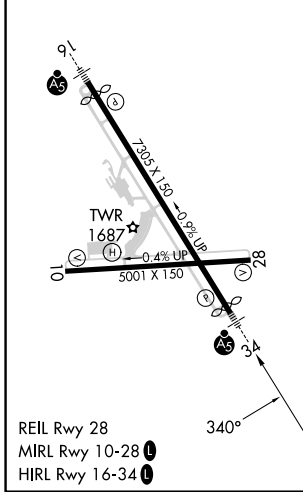
ATIS <b>128.15</b>	BINGHAMTON APP CON * <b>118.6 257.625</b>	BINGHAMTON TOWER * <b>119.3 (CTAF) 0 239.25</b>	GND CON <b>121.9</b>	CLNC DEL <b>125.05</b>	UNICOM <b>122.95</b>
-----------------------	--	--	-------------------------	---------------------------	-------------------------



NE-2, 05 SEP 2024 to 03 OCT 2024

NE-2, 05 SEP 2024 to 03 OCT 2024

ELEV 1636 **D** TDZE 1600



CATEGORY	A	B	C	D
LPV DA	1800/24		200 (200-½)	
LNAV/VNAV DA	2082/60		482 (500-1¼)	
LNAV MDA	2040/24	440 (500-½)	2040/40 440 (500-¾)	2040/50 440 (500-1)
<b>C</b> CIRCLING	2120-1	484 (500-1)	2120-1½ 484 (500-1½)	2200-2 564 (600-2)