

ATLANTA, GEORGIA

AL-26 (FAA)

24137

LOC/DME I-FUN <b>108.9</b> Chan <b>26</b>	APP CRS <b>095°</b>	Rwy Idg TDZE Apt Elev	<b>9000</b> <b>1026</b> <b>1026</b>
---	------------------------	-----------------------------	---

# ILS RWY 9R (CAT II & III)

HARTSFIELD-JACKSON ATLANTA INTL (ATL)

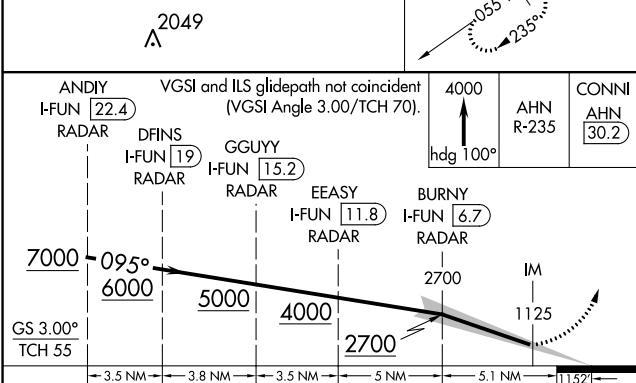
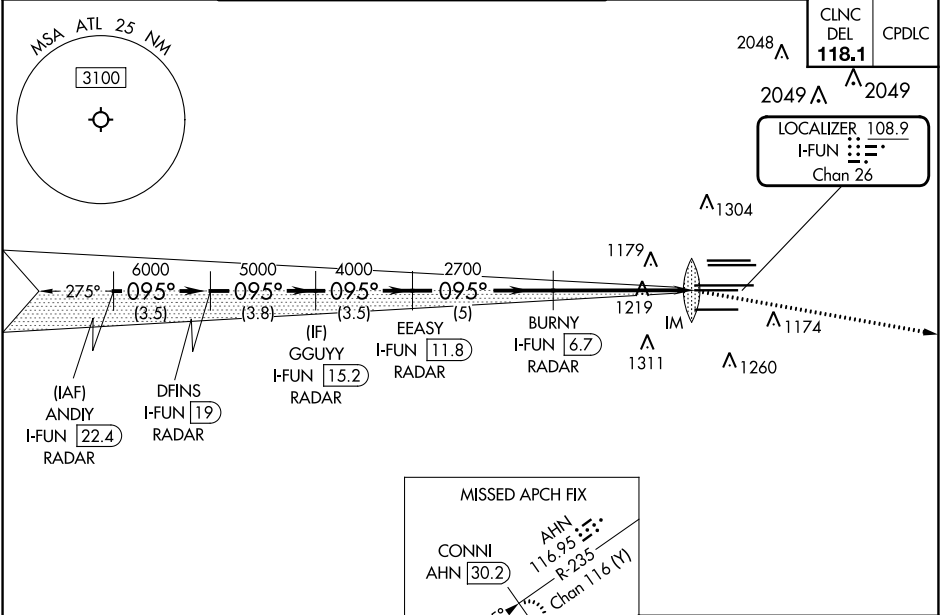
RADAR required for procedure entry, DME.

Simultaneous approach authorized.

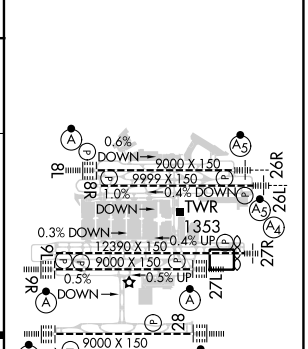


MISSED APPROACH: Climb to 4000 on heading 100° and AHN VOR/DME R-235 to CONNI/AHN 30.2 DME and hold.

D-ATIS ARR <b>119.65</b>	ATLANTA APP CON <b>127.9 379.9</b>	ATLANTA TOWER				ALL RWYS	GND CON	ALL RWYS
DEP <b>125.55</b>	<b>127.9 379.9</b>	8L-26R	8R-26L	9L-27R	9R-27L	10-28	(8L-26R,8R-26L) (9L-27R,9R-27L)	10-28
		<b>119.1</b>	<b>125.325</b>	<b>123.85</b>	<b>119.3</b>	<b>119.5</b>	<b>254.4</b>	<b>121.9</b>
							<b>121.75</b>	<b>121.65</b>
								<b>254.4</b>



ELEV	1026	D	TDZE	1026
------	------	---	------	------



CATEGORY	A	B	C	D
S-ILS 9R	CAT II RA 118/12 100 DA 1126			
S-ILS 9R	CAT III RVR 03			

**CATEGORY II & III ILS - SPECIAL AIRCREW & AIRCRAFT CERTIFICATION REQUIRED**

HIRL all Rwy's  
TDZ/CL Rwy's 8L,  
9R, 10, 26R, 27L and 28

SE-4, 05 SEP 2024 to 03 OCT 2024

SE-4, 05 SEP 2024 to 03 OCT 2024

ATLANTA, GEORGIA  
Amdt 20 22APR21

33°38'N-84°26'W

# HARTSFIELD-JACKSON ATLANTA INTL (ATL)

## ILS RWY 9R (CAT II & III)