

LOC/DME I-OMO 111.55	APP CRS 095°	Rwy Idg 9000
Chan 52 (Y)		TDZE 1000
		Apt Elev 1026

ILS or LOC RWY 10

HARTSFIELD-JACKSON ATLANTA INTL (ATL)

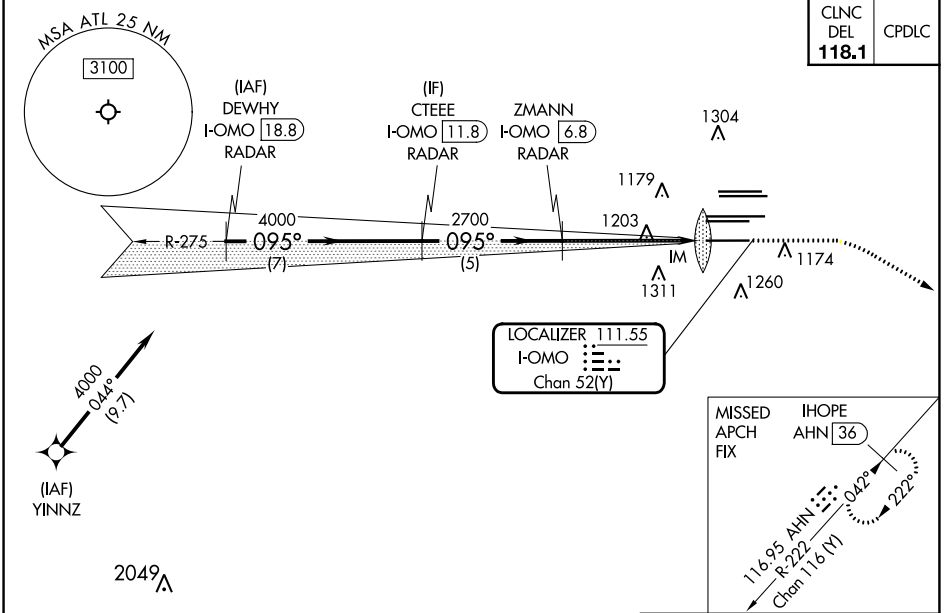
DME or RADAR required. RNP APCH - GPS from YINNZ.

Simultaneous approach authorized with Rwy 9L or 8R or 8L, or Rwy 9L and 8L. Localizer not suitable for electronic rollout guidance.

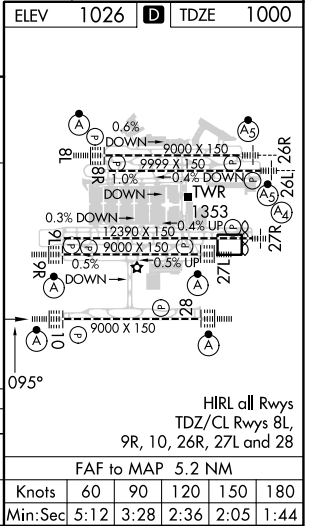
ALSF-2

MISSED APPROACH: Climb to 1400 then dimbing right turn to 3000 on heading 120° and AHN R-222 to IHOPE/AHN 36 DME and hold.

D-ATIS ARR 119.65	ATLANTA APP CON DEP 127.9 379.9	ATLANTA TOWER 8L-26R 8R-26L 9L-27R 9R-27L 10-28 RWYs					ALL RWYs 119.1 125.325 123.85 119.3 119.5 254.4	GND CON DEP 121.9	ALL RWYs 121.75 121.65 254.4
-----------------------------	--	---	--	--	--	--	--	-----------------------------	---



ELEV 1026	TDZE 1000		
DEWHY I-OMO 18.8 RADAR	CTEE E I-OMO 11.8 RADAR	ZMANN I-OMO 6.8 RADAR	IHOPE/AHN 36
4000 095°	4000	2700	I-OMO 2.9
GS 3.00° TCH 55	2700	I-OMO 1.7	IM
7 NM	5 NM	3.9 NM	1.1
CATEGORY A	B	C	D
S-ILS 10	1200/18		200 (200-½)
S-LOC 10	1460/24	460 (500-½)	1460/45 460 (500-¾)



SE-4, 05 SEP 2024 to 03 OCT 2024

SE-4, 05 SEP 2024 to 03 OCT 2024