

ATLANTA, GEORGIA

AL-26 (FAA)

ILS PRM RWY 10 (CLOSE PARALLEL)

HARTSFIELD-JACKSON ATLANTA INTL (ATL)

LOC/DME I-OMO 111.55 Chan 52 (Y)	APP CRS 095°	Rwy Idg 9000 TDZE 1000 Apt Elev 1026
--	------------------------	---

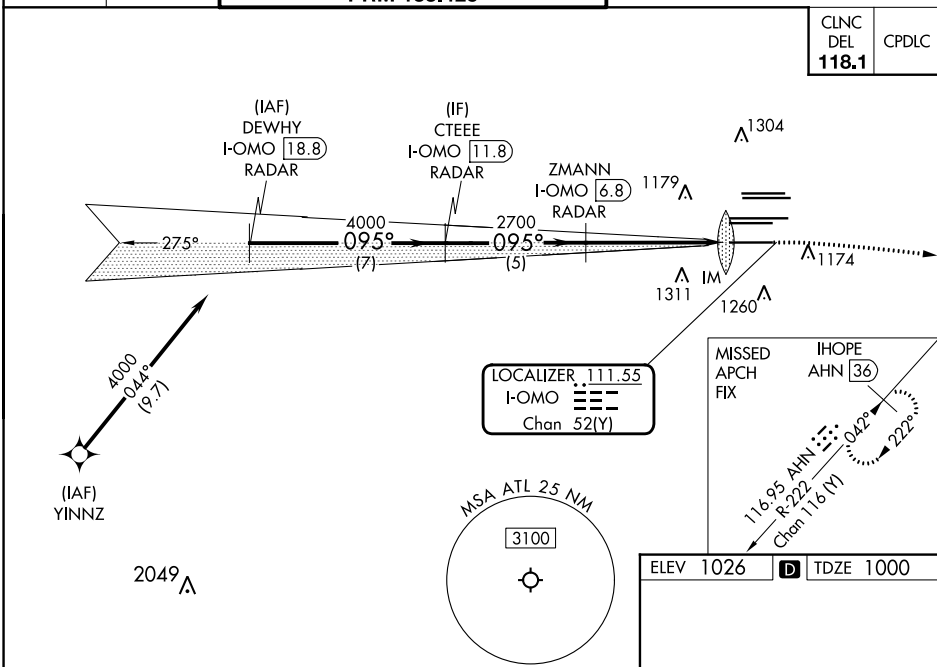
DME or RADAR required. RNP APCH - GPS from YINNZ.

Simultaneous approach authorized. Procedure NA when glide slope not available (ILS procedures only). Dual VHF Comm required. See additional requirements on AAUP. Localizer not suitable for electronic rollout guidance.

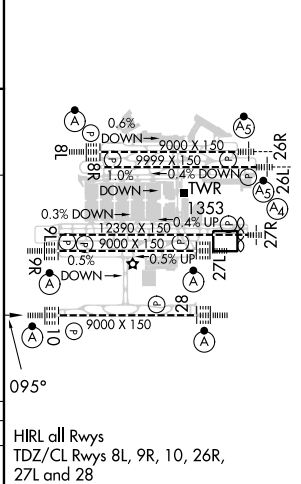
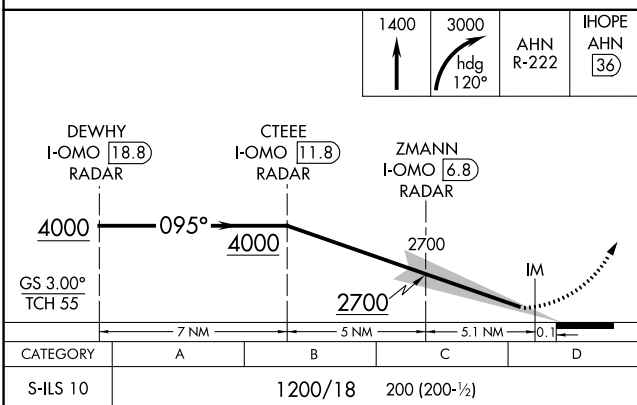
ALSF-2
MISSED APPROACH: Climb to 1400 then climbing right turn to 3000 on heading 120° and AHN R-222 to IHOPE/AHN 36 DME and hold.

D-ATIS ARR 119.65 DEP 125.55	ATLANTA APP CON 127.9 379.9	ATLANTA TOWER 8L-26R 8R-26L 9L-27R 9R-27L 10-28 RWYS 119.1 125.325 123.85 119.3 119.5 254.4 PRM 133.425				ALL RWYS 121.9	GND CON 8L-26R,8R-26L 9L-27R,9R-27L 10-28 RWYS 121.75 121.65 254.4	ALL RWYS 121.65 254.4
--	--	--	--	--	--	-----------------------------	---	------------------------------------

CINC DEL 118.1	CPDLC
-----------------------------	-------



ELEV 1026	TDZE 1000
-----------	-----------



ATLANTA, GEORGIA
Amdt 5 30DEC21

33°38'N-84°26'W

HARTSFIELD-JACKSON ATLANTA INTL (ATL)
ILS PRM RWY 10 (CLOSE PARALLEL)

SE-4, 05 SEP 2024 to 03 OCT 2024

SE-4, 05 SEP 2024 to 03 OCT 2024