

ILS PRM RWY 9R (CLOSE PARALLEL)

HARTSFIELD-JACKSON ATLANTA INTL (ATL)

| | | |
|---|------------------------|---|
| LOC/DME I-FUN 108.9 Chan 26 | APP CRS 095° | Rwy Idg 9000 TDZE 1026 Apt Elev 1026 |
|---|------------------------|---|

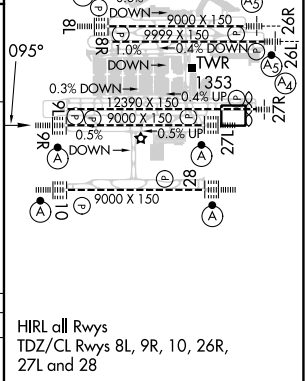
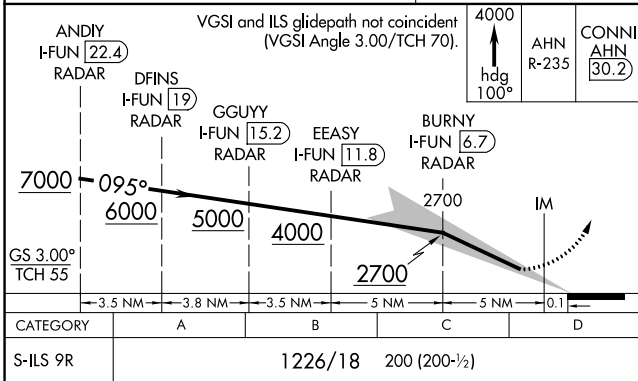
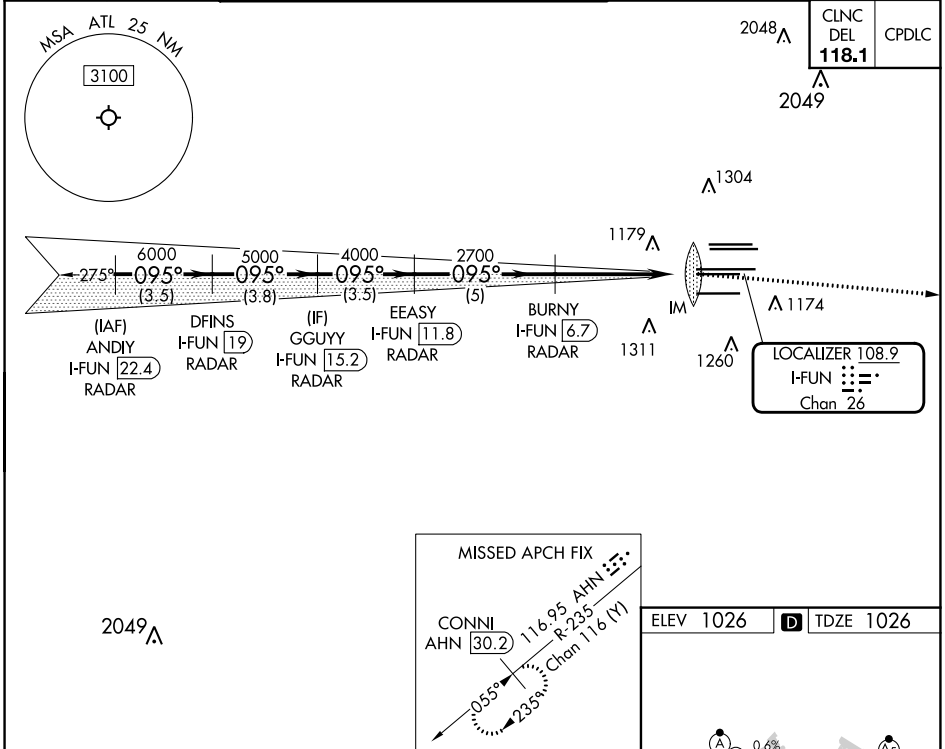
RADAR required for procedure entry, DME.

Simultaneous approach authorized. Use of FD or AP required during simultaneous operations. Dual VHF comm required. See additional requirements on AAUP.

ALSF-2

MISSED APPROACH: Climb to 4000 on heading 100° and AHN VOR/DME R-235 to CONNI/AHN 30.2 DME and hold.

| | | | | | | | | |
|--|--|---|--|--|--|-----------------------------|---|------------------------------------|
| D-ATIS ARR 119.65 DEP 125.55 | ATLANTA APP CON 127.9 379.9 | ATLANTA TOWER 8L-26R 8R-26L 9L-27R 9R-27L 10-28 RWYS 119.1 125.325 123.85 119.3 119.5 254.4 PRM 132.55 | | | | ALL RWYS 121.9 | GND CON (8L-26R,8R-26L) (9L-27R,9R-27L) 10-28 121.75 | ALL RWYS 121.65 254.4 |
|--|--|---|--|--|--|-----------------------------|---|------------------------------------|



SE-4, 05 SEP 2024 to 03 OCT 2024

SE-4, 05 SEP 2024 to 03 OCT 2024