


LOC I-LJU <b>108.5</b>	APP CRS <b>245°</b>	Rwy Idg <b>11800</b>
		TDZE <b>624</b>
		Apr Elev <b>633</b>

# ILS or LOC RWY 25

OSCODA/WURTSMITH (OSC)

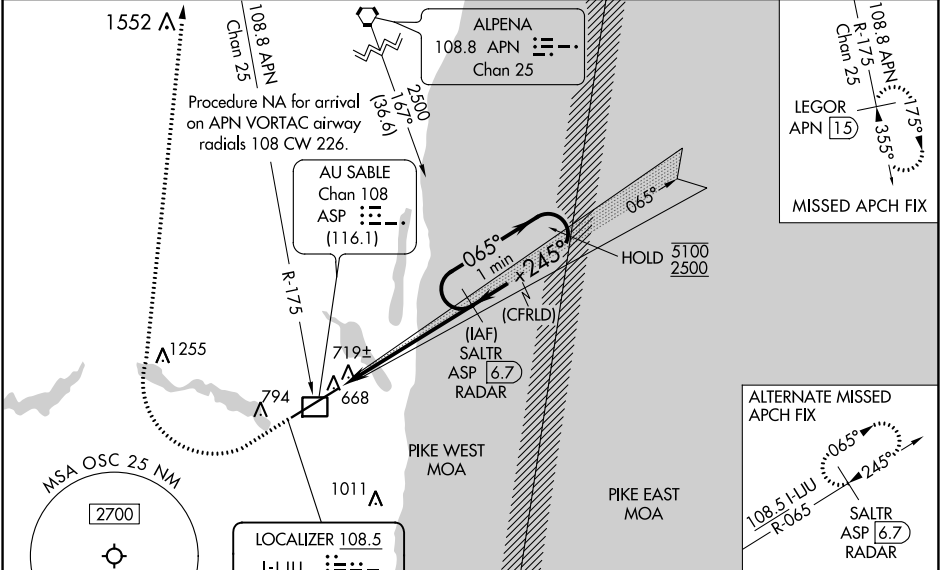
DME required.

**NA** Circling NA southeast of Rwy 7-25. For inop ALS, increase S-LOC Cats C and D visibility to 1 SM. DME from ASP DME. Simultaneous reception of I-LJU and ASP DME required.

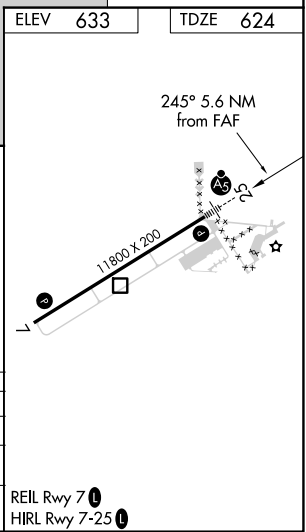
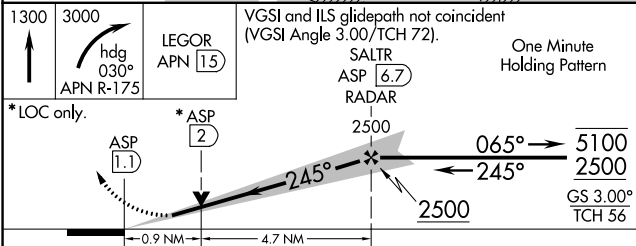
MALSR 

MISSED APPROACH: Climb to 1300 then climbing right turn to 3000 on heading 030° and an APN VORTAC R-175 to LEGOR/APN 15 DME and hold.

AWOS-3 <b>118.7</b>	MINNEAPOLIS CENTER <b>125.475 269.45</b>	UNICOM <b>123.0 (CTAF) 0</b>
------------------------	---	---------------------------------



ELEV 633	TDZE 624
----------	----------



CATEGORY	A	B	C	D
S-ILS 25	824-½ 200 (200-½)			
S-LOC 25	980-½ 356 (400-½)		980-⅝ 356 (400-⅝)	
<b>C</b> CIRCLING	1140-1 507 (600-1)		1300-2 667 (700-2)	

REIL Rwy 7 **0**  
HIRL Rwy 7-25 **0**

EC-1, 05 SEP 2024 to 03 OCT 2024

EC-1, 05 SEP 2024 to 03 OCT 2024