

WAAS CH 97417 W07A	APP CRS 065°	Rwy Idg 11800 TDZE 633 Apt Elev 633
--	------------------------	--

RNAV (GPS) RWY 7

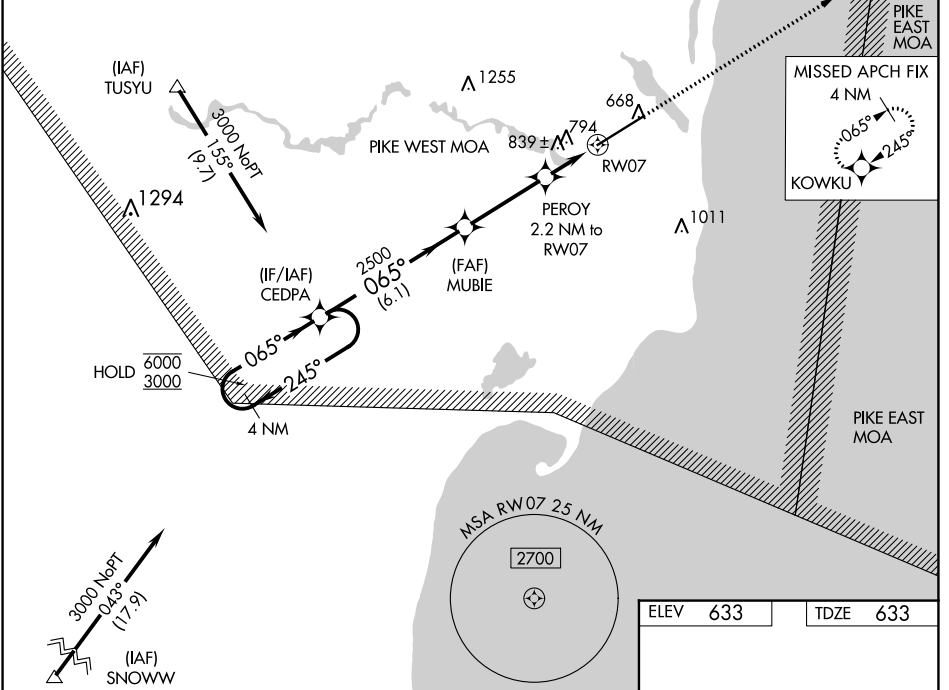
OSCODA/WURTSMITH (OSC)

RNP APCH:

▼ Circling NA southeast of Rwy 7-25. Baro-VNAV and VDP NA when using Alpena altimeter setting. Rwy 7 helicopter visibility reduction below $\frac{3}{4}$ SM NA. For uncompensated Baro-VNAV systems, LNAV/VNAV NA below -16°C or above 54°C. When local altimeter setting not received use Alpena altimeter setting and increase all DA 96 feet and all MDA 100 feet. Increase LPV all Cats and LNAV Cat C and D visibility $\frac{1}{4}$ SM, and Circling Cat C visibility $\frac{1}{4}$ SM and Cat D visibility $\frac{1}{2}$ SM.

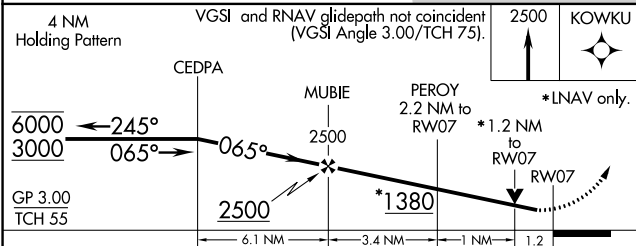
MISSED APPROACH:
Climb to 2500 direct KOWKU and hold.

AWOS-3 118.7	MINNEAPOLIS CENTER 125.475 269.45	UNICOM 123.0 (CTAF)
------------------------	---	-------------------------------

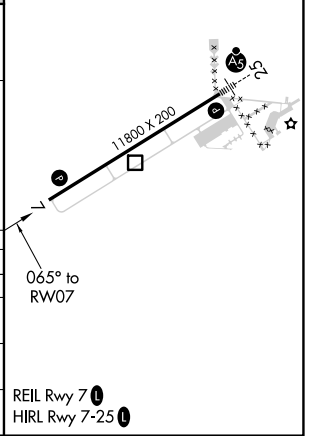


EC-1, 05 SEP 2024 to 03 OCT 2024

EC-1, 05 SEP 2024 to 03 OCT 2024



ELEV 633	TDZE 633
-----------------	-----------------



CATEGORY	A	B	C	D
LPV DA	892- $\frac{3}{4}$ 259 (300- $\frac{3}{4}$)			
LNAV/VNAV DA	1148-1 $\frac{3}{4}$ 515 (600-1 $\frac{3}{4}$)			
LNAV MDA	1080-1 447 (500-1)	1080-1 $\frac{3}{8}$ 447 (500-1 $\frac{3}{8}$)	1080-1 $\frac{1}{2}$ 447 (500-1 $\frac{1}{2}$)	
CIRCLING	1140-1 507 (600-1)	1160-1 $\frac{1}{2}$ 527 (600-1 $\frac{1}{2}$)	1300-2 667 (700-2)	