

COCOA BEACH, FLORIDA

# RNAV (GPS) RWY 21

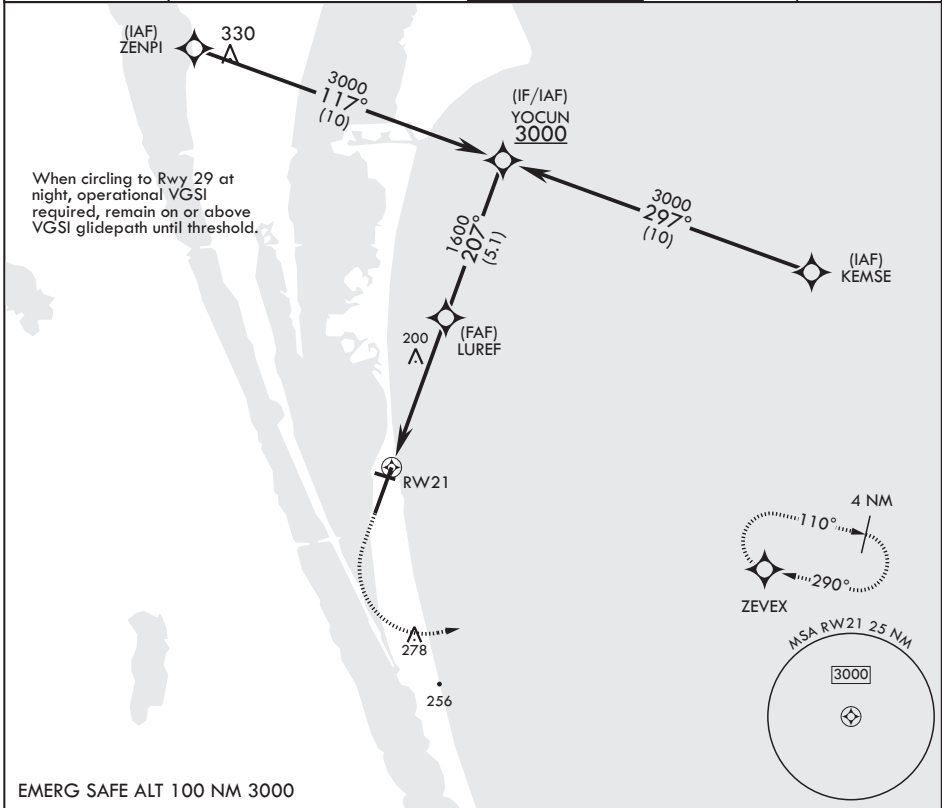
APCH CRS <b>207°</b>	Rwy Idg <b>9008</b>
	TDZE <b>7</b>
	Arprt Elev <b>8</b>

(USAF)

PATRICK SFB (KCOF)

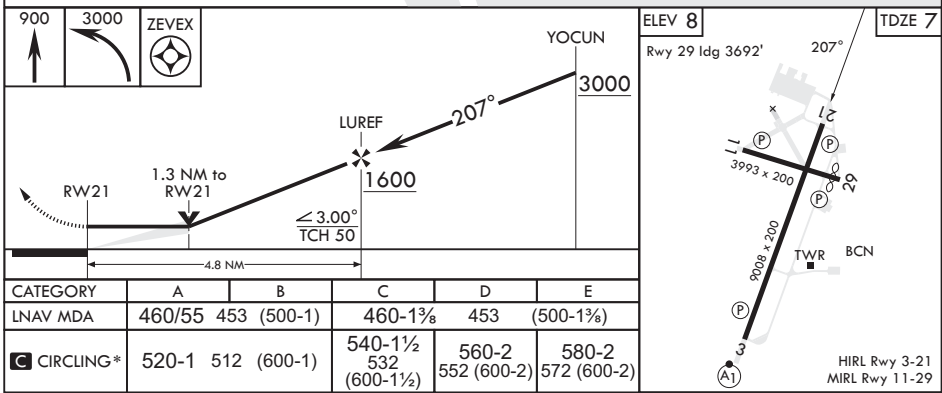
RNP APCH-GPS	MISSED APPROACH: Climb to 900 then climbing left turn to 3000 direct ZEVEX and hold.
--------------	--

ATIS* <b>119.175 273.5</b>	ORLANDO APP CON/DEP CON* <b>132.65 281.425</b>	TOWER* <b>133.75 269.375</b>	GND CON* <b>124.35 335.8</b>	CLNC DEL* <b>118.4 289.4</b>
-------------------------------	---	---------------------------------	---------------------------------	---------------------------------



SE-3, 05 SEP 2024 to 03 OCT 2024

SE-3, 05 SEP 2024 to 03 OCT 2024



COCOA BEACH, FLORIDA

28°14'N - 80°37'W

PATRICK SFB (KCOF)

Amdt 1 02NOV23

# RNAV (GPS) RWY 21