

RIVER FOUR DEPARTURE

PATRICK SFB (KCOF)

COCOA BEACH, FLORIDA

[USAF]

ATIS ★
 119.175 273.5
 CLNC DEL ★
 118.4 289.4
 GND CON ★
 124.35 335.8
 TOWER ★
 133.75 269.375
 ORLANDO DEP CON ★
 132.65 281.425

DME required


Rwy	Knots	60	120	180	240	300	360
03/21	V/V(fpm)	210	420	630	840	1050	1260

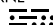
Minimum Climb Rate to 500


**TOP ALTITUDE
2000**

ORMOND BEACH
 112.6 OMN 
 Chan 73

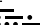
ORLANDO
 112.2 ORL 
 Chan 59

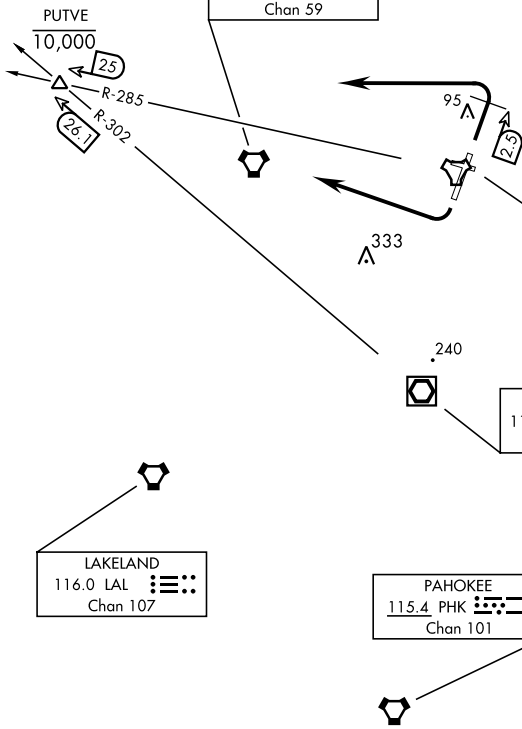
PATRICK
 Chan 97 COF 
 (115.0)

MELBOURNE
 115.85 MLB 
 Chan 105(Y)

LAKELAND
 116.0 LAL 
 Chan 107

PAHOKEE
 115.4 PHK 
 Chan 101

TREASURE
 117.3 TRV 
 Chan 120



NOTE: Chart not to scale.

DEPARTURE ROUTE DESCRIPTION

Expect clearance to filed altitude/flight level 10 minutes after departure.

TAKEOFF RWY 03: Track runway heading, climb and maintain 2000. At COF TACAN 2.5 DME turn left direct PUTVE (COF R-285/25 DME). After receiving climb clearance from ATC, cross PUTVE at or below 10,000. Note: All aircraft shall not commence turn prior to 2.5 DME due to noise abatement.

TAKEOFF RWY 21: Track runway heading, climb and maintain 2000. After departure end of runway, turn right direct PUTVE (COF R-285/25 DME). After receiving climb clearance from ATC, cross PUTVE at or below 10,000.

RIVER FOUR DEPARTURE

Amdt 1 28FEB19

COCOA BEACH, FLORIDA

PATRICK SFB (KCOF)

SE-3, 05 SEP 2024 to 03 OCT 2024

SE-3, 05 SEP 2024 to 03 OCT 2024