

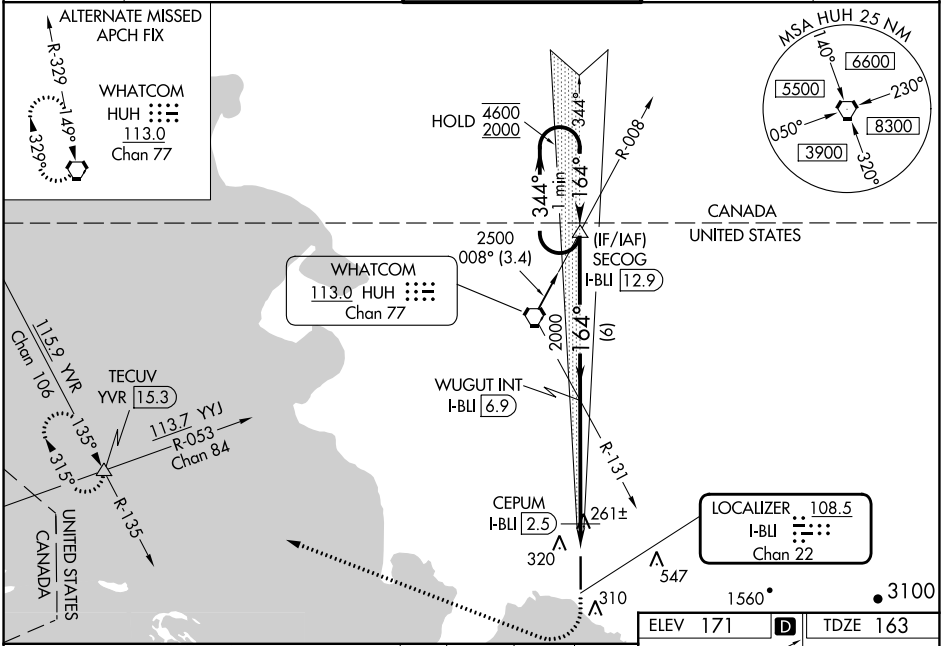
LOC/DME I-BLI 108.5 Chan 22	APP CRS 164°	Rwy Idg TDZE Apt Elev	6700 163 171
--	------------------------	-----------------------------	---

ILS or LOC RWY 16

BELLINGHAM INTL (BLI)

DME or RADAR required.		MALSR	MISSED APPROACH: Climb to 700 then climbing right turn to 2000 on heading 275° and on YVR VOR/DME R-135 to TECUV INT/YVR 15.3 DME and hold.
<p>For inop ALS, increase S-LOC Cat C/D visibility to RVR 6000 and CEPUM fix minimums S-LOC 16 Cat C/D to RVR 5500. # RVR 1800 authorized with use of FD or AP or HUD to DA.</p>		AS	

ATIS 134.45	VICTORIA TERMINAL APP CON 132.7 290.8	BELLINGHAM TOWER ★ 124.9 (CTAF) 379.3	GND CON 127.4 379.3	UNICOM 122.95
-----------------------	---	---	-------------------------------	-------------------------



NW-1, 05 SEP 2024 to 03 OCT 2024

NW-1, 05 SEP 2024 to 03 OCT 2024

One Minute Holding Pattern	SECOG I-BLI [12.9]	WUGUT INT I-BLI [6.9]	YVR R-135	TECUV
<p>4600 ← 344°</p> <p>2000 ← 164°</p> <p>GS 3.00° TCH 51</p>		<p>2000</p> <p>*580</p>	<p>700</p> <p>2000</p> <p>hdg 275°</p>	<p>*LOC only</p> <p>CEPUM I-BLI [2.5]</p> <p>I-BLI [1.3]</p>
6 NM		4.4 NM	1.2 NM	
CATEGORY	A	B	C	D
S-ILS 16#	363/24 200 (200-½)			
S-LOC 16	580/24	417 (500-½)	580/40	417 (500-¾)
CIRCLING	640-1	469 (500-1)	900-2	1160-3
			729 (800-2)	989 (1000-3)
CEPUM FIX MINIMUMS (DME REQUIRED)				
S-LOC 16	520/24	357 (400-½)	520/30	357 (400-¾)
CIRCLING	640-1	469 (500-1)	900-2	1160-3
			729 (800-2)	989 (1000-3)

ELEV 171	D	TDZE 163			
REIL Rwy 34	34				
HIRL Rwy 16-34					
FAF to MAP 5.6 NM					
Knots	60	90	120	150	180
Min:Sec	5:36	3:44	2:48	2:14	1:52

ILS or LOC RWY 16