

LOC/DME I-ROE <b>109.5</b> Chan <b>32</b>	APP CRS <b>238°</b>	Rwy Idg <b>10801</b> TDZE <b>641</b> Apt Elev <b>650</b>
---	------------------------	--

# ILS or LOC RWY 24

BIRMINGHAM-SHUTTLESWORTH INTL (BHM)

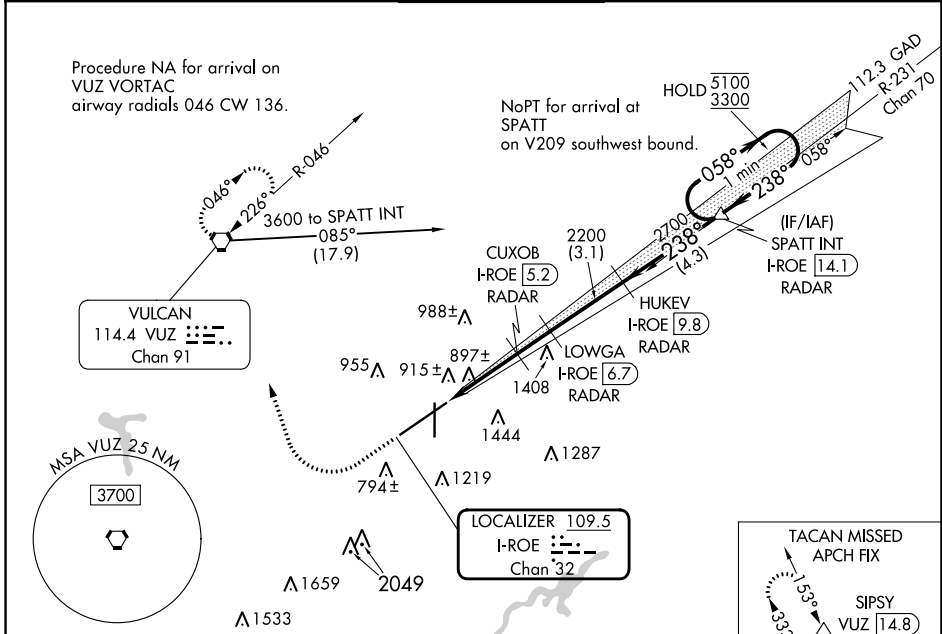
DME or RADAR required.

▼ Rwy 24 helicopter visibility reduction below RVR 4000 NA. For inop ALS, increase S-ILS 24 Cat E visibility to RVR 4000 and increase S-LOC 24 Cat A/B visibility to RVR 5500, and Cat C/D/E to 1 ½ SM. \*\*RVR 1800 authorized with use of FD or AP or HUD to DA.

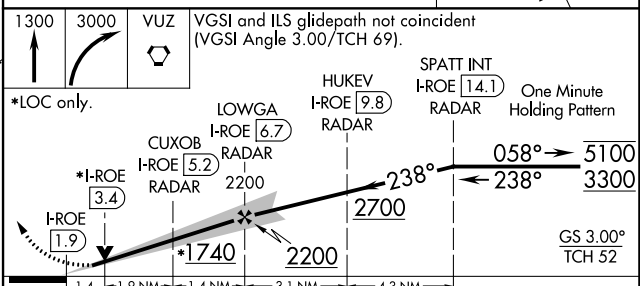
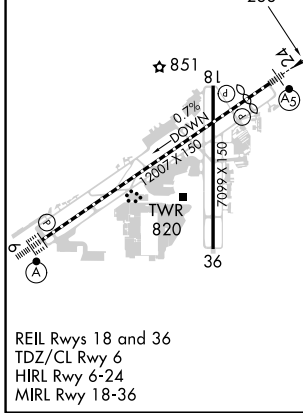
MALSR

MISSED APPROACH: Climb to 1300 then climbing right turn to 3000 direct VUZ VORTAC and hold. (TACAN aircraft continue on VUZ VORTAC R-333 to SIPSY/VUZ 14.8 DME and hold NW, right turn, 153° inbound).

ATIS <b>119.4 270.1</b>	BIRMINGHAM APP CON <b>123.8 256.8</b>	BIRMINGHAM TOWER <b>119.9 317.725</b>	GND CON <b>121.7 348.6</b>	CLNC DEL <b>125.675 305.2</b>
----------------------------	--	--	-------------------------------	----------------------------------



ELEV <b>650</b>	<b>D</b>	TDZE <b>641</b>	Λ 1541	Λ 1676
-----------------	----------	-----------------	--------	--------



CATEGORY	A	B	C	D	E
S-ILS 24**	841/24 200 (200-½)				
S-LOC 24	1160/40	519 (600-¾)	1160/55	519 (600-1)	

SE-4, 05 SEP 2024 to 03 OCT 2024

SE-4, 05 SEP 2024 to 03 OCT 2024