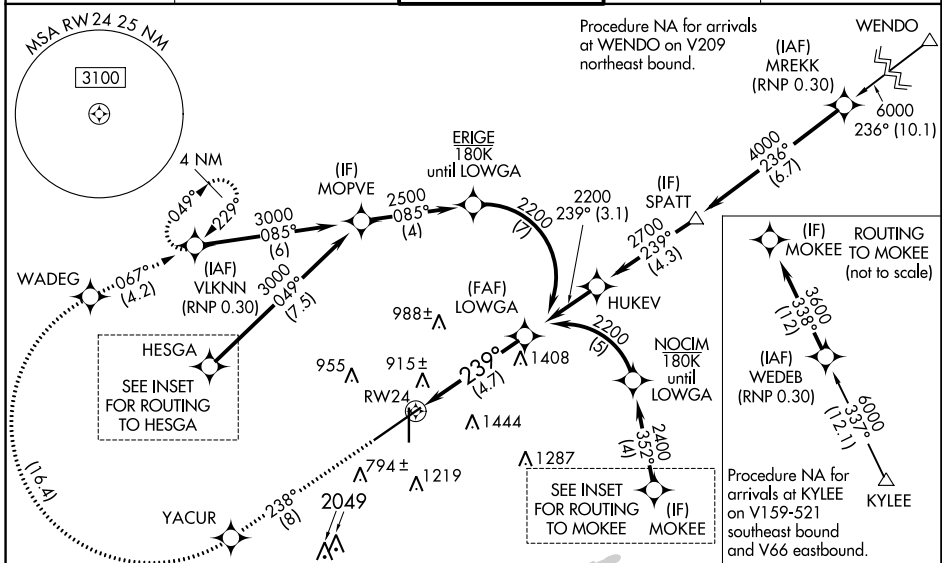


APP CRS	Rwy Idg	10801
239°	TDZE	641
	Apt Elev	650

RNAV (RNP) Z RWY 24

BIRMINGHAM-SHUTTLESWORTH INTL (BHM)

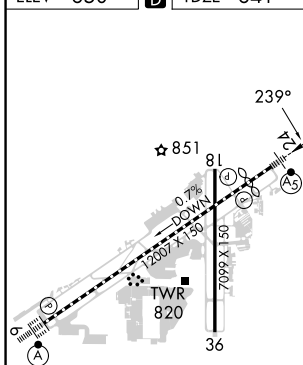
RNP AR APCH. RF required.		MALSR	MISSED APPROACH: Climb to 3000 on track 238° to YACUR then, right turn to WADEG, then on track 067° to VLKNN and hold.	
<p>▼ For uncompensated Baro-VNAV systems, procedure NA below -8°C or above 54°C. For inop ALS, increase RNP 0.15 all Cats visibility to 1 3/8 and increase RNP 0.30 all Cats visibility to 1 3/4 SM.</p>				
ATIS	BIRMINGHAM APP CON	BIRMINGHAM TOWER	GND CON	CLNC DEL
119.4 270.1	123.8 256.8	119.9 317.725	121.7 348.6	125.675 305.2



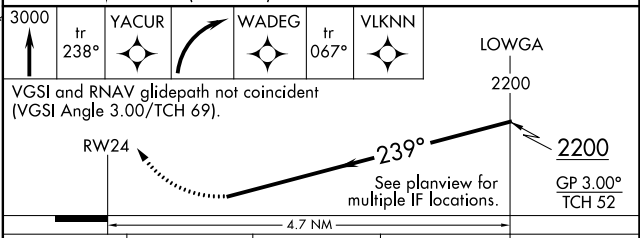
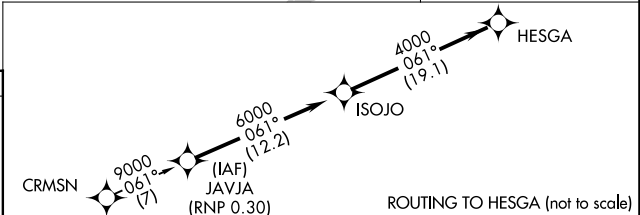
SE-4, 05 SEP 2024 to 03 OCT 2024

SE-4, 05 SEP 2024 to 03 OCT 2024

ELEV	650	D	TDZE	641
------	-----	----------	------	-----



REIL Rwy 18 and 36
 TDZ/CL Rwy 6
 HIRL Rwy 6-24
 MIRL Rwy 18-36



CATEGORY	A	B	C	D
RNP 0.15 DA		1149-1	508 (500-1)	
RNP 0.30 DA		1243-1 3/8	602 (600-1 3/8)	

AUTHORIZATION REQUIRED