

RNAV (RNP) X RWY 28R

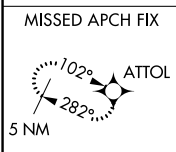
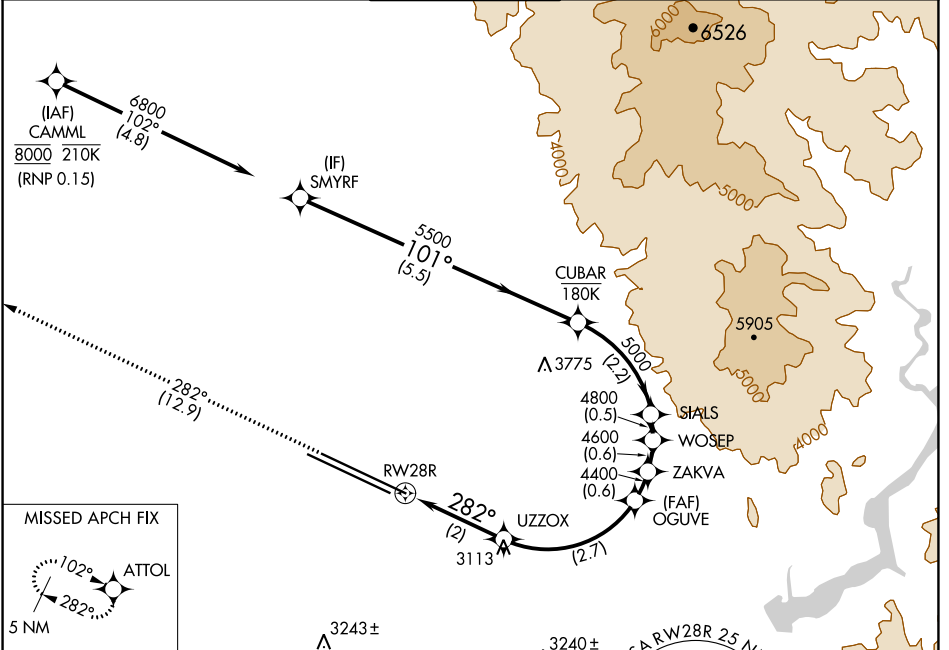
BOISE AIR TRML/GOWEN FLD (BOI)

APP CRS 282°	Rwy Idg 10000
	TDZE 2871
	Apt Elev 2871

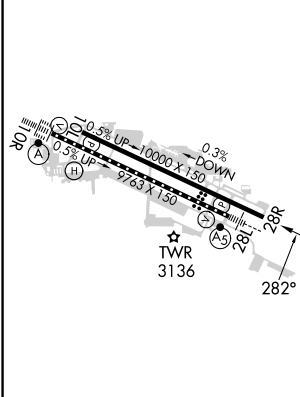
NA For uncompensated Baro-VNAV systems, procedure NA below -1.4°C (7°F) or above 52°C (126°F). RF required. GPS required.

MISSED APPROACH: Climb to 6000 on track 282° to ATTOL and hold.

D-ATIS 123.9 290.4	BIG SKY APP CON 119.6 269.4	BOISE TOWER 118.1 257.8	GND CON 121.7 348.6	CLNC DEL 125.9 323.2
------------------------------	---------------------------------------	-----------------------------------	-------------------------------	--------------------------------



ELEV 2871	D	TDZE 2871
-----------	----------	-----------



6000	ATTOL	3560	3669
tr 282°			
	OGUVE	ZAKVA	WOSEP
	3548	4400	4800
			SIALS
			5000
			CUBAR
			5500
			SMYRF
			6800
			GP 3.00°
			TCH 55

2 NM	2.7 NM	0.6 NM	0.6 NM	0.5 NM	2.2 NM	5.5 NM
CATEGORY	A	B	C	D		
RNP 0.15 DA	3288-1 ³ / ₈			417 (500-1 ³ / ₈)		

REIL Rwy 10L
TDZ/CL Rwy 10R and 28L
HIRL Rwy 10L-28R and 10R-28L

AUTHORIZATION REQUIRED

NW-1, 05 SEP 2024 to 03 OCT 2024

NW-1, 05 SEP 2024 to 03 OCT 2024