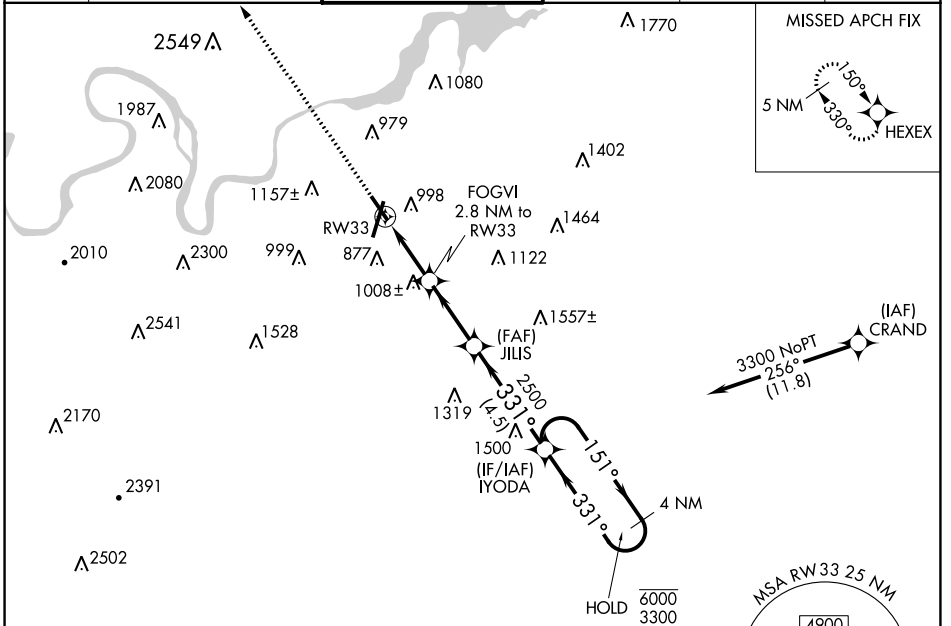


APP CRS <b>331°</b>	Rwy Idg TDZE Apt Elev	<b>5000</b> <b>672</b> <b>683</b>
------------------------	-----------------------------	---

# RNAV (GPS) RWY 33

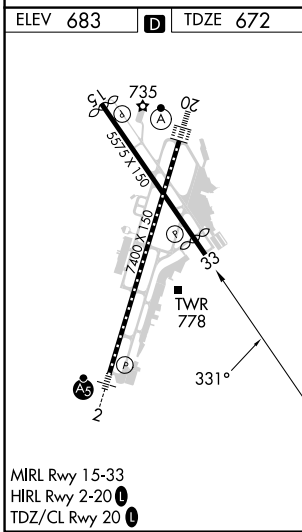
LOVELL FLD (CHA)

RNP APCH - GPS.		MISSED APPROACH: Climb to 4100 direct HEXEX and hold. * Missed approach requires minimum climb of 235 feet per NM to 3000.			
<p>⚠ Straight-In Rwy 33 NA at night, Circling Rwy 15, 33 NA at night.                  ⚠ Rwy 33 helicopter visibility reduction below 1 SM NA.</p>		CHATTANOOGA TOWER ★ <b>118.3 (CTAF) 257.8</b>		GND CON <b>121.7 348.6</b>	
ATIS <b>119.85</b>		CHATTANOOGA APP CON ★ <b>125.1 379.1</b>		CLNC DEL <b>120.95 348.6</b>	
				UNICOM <b>122.95</b>	



SE-1, 05 SEP 2024 to 03 OCT 2024

SE-1, 05 SEP 2024 to 03 OCT 2024



4100	HEXEX	IYODA 4 NM Holding Pattern	
FOGVI 2.8 NM to RW33 RW33 1600 $\leq 3.00^\circ$ TCH 40 2.8 NM   2.8 NM   4.5 NM		JILIS 2500 331°   151°   6000   3300	
CATEGORY	A	B	C
LNAV MDA*	1260-1	588 (600-1)	1260-1¾ 588 (600-1¾)
LNAV MDA	1520-1 848 (900-1)	1520-1¼ 848 (900-1¼)	1520-2½ 848 (900-2½)
CIRCLING	1520-1¼	837 (900-1¼)	1580-3 897 (900-3)