

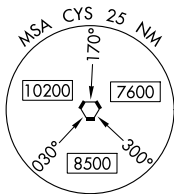
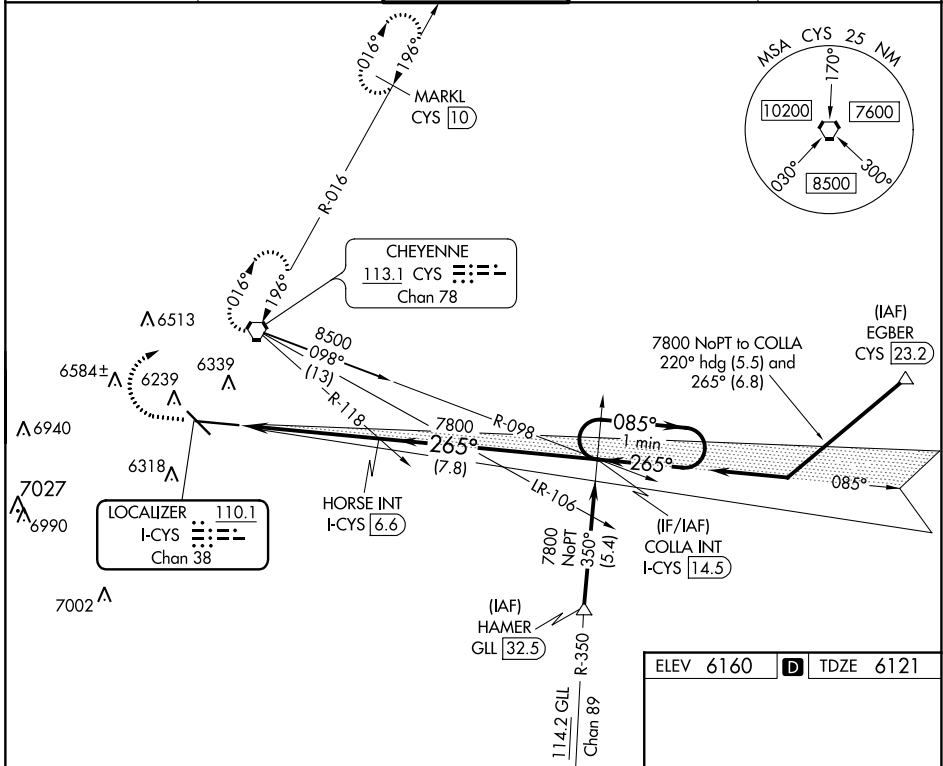
LOC/DME I-CYS <b>110.1</b> Chan <b>38</b>	APP CRS <b>265°</b>	Rwy ldg TDZE Apt Elev	<b>7985</b> <b>6121</b> <b>6160</b>
---	------------------------	-----------------------------	---

# ILS or LOC RWY 27

CHEYENNE RGNL/JERRY OLSON FLD (CYS)

<b>⚠</b> # RVR 1800 authorized with the use of FD or AP ASR/PAR or HUD to DA.	<b>MALSR</b> 	<b>MISSED APPROACH:</b> Climb to 6800, then climbing right turn to 8000 direct CYS VORTAC and hold, continue climb-in-hold to 8000 (TACAN aircraft continue on CYS VORTAC R-016 to MARKL/CYS 10 DME and hold N, RT, 196° inbound).
---	------------------	--

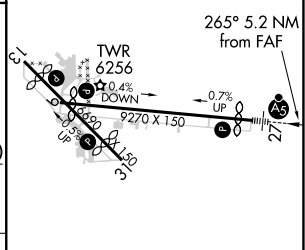
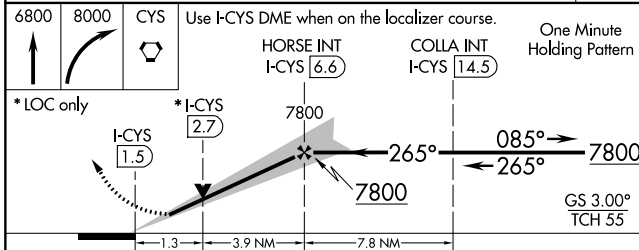
ATIS <b>134.425 278.3</b>	CHEYENNE APP CON ★ <b>124.55 263.075</b>	CHEYENNE TOWER ★ <b>118.7 (CTAF) 0 257.8</b>	GND CON <b>121.9 254.275</b>	UNICOM <b>122.95</b>
------------------------------	---	---	---------------------------------	-------------------------



NW-1, 05 SEP 2024 to 03 OCT 2024

NW-1, 05 SEP 2024 to 03 OCT 2024

ELEV 6160	<b>D</b> TDZE 6121
-----------	--------------------



CATEGORY	A	B	C	D
S-ILS 27 #	6321/24 200 (200-1/2)			
S-LOC 27	6560/24	439 (400-1/2)	6560/40	439 (400-3/4)
<b>C</b> CIRCLING	6640-1	480 (500-1)	6900-2 740 (800-2)	6920-2 1/2 760 (800-2 1/2)

REIL Rwy 9, 13, and 31 <b>⓪</b>					
HIRL Rwy 9-27 <b>⓪</b>					
MIRL Rwy 13-31 <b>⓪</b>					
FAF to MAP 5.2 NM					
Knots	60	90	120	150	180
Min:Sec	5:12	3:28	2:36	2:05	1:44