

RNAV (RNP) Y RWY 31C

CHICAGO MIDWAY INTL (MDW)

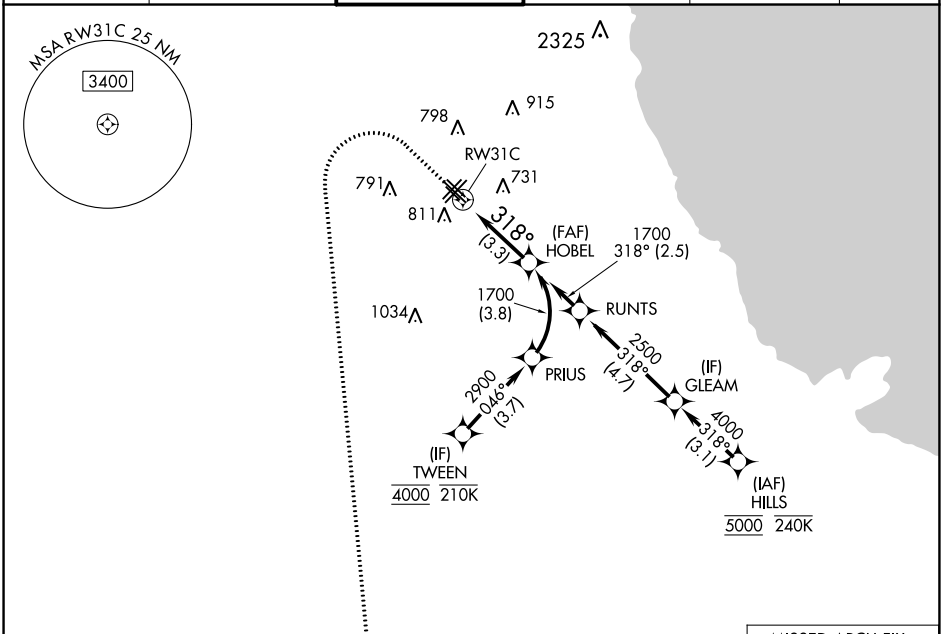
APP CRS 318°	Rwy Idg 5826
	TDZE 613
	Apt Elev 620

RNP AR APCH - GPS.

▼ For uncompensated Baro-VNAV systems, procedure NA below -20°C or above 54°C.

MISSED APPROACH: Climb to 1100 then climbing left turn to 2600 direct EON VORTAC and hold.

D-ATIS 132.75	CHICAGO APP CON 128.2 353.875	MIDWAY TOWER 135.2 269.125	GND CON 118.075	CLNC DEL 124.625	CPDLC
-------------------------	---	--------------------------------------	---------------------------	----------------------------	-------

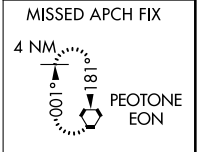
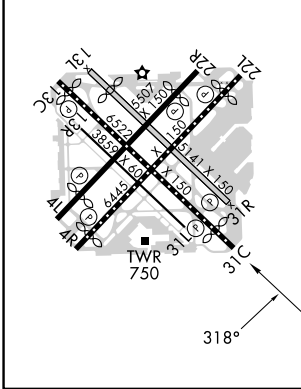


EC-3, 05 SEP 2024 to 03 OCT 2024

EC-3, 05 SEP 2024 to 03 OCT 2024

ELEV 620	D	TDZE 613
----------	----------	----------

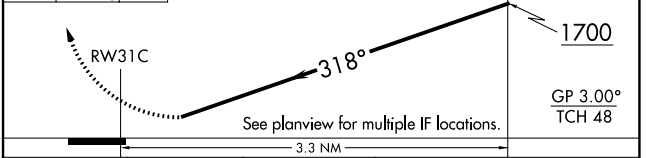
HIRL Rwy 4R-22L and 13C-31C
MIRL Rwy 4L-22R, 13L-31R, and 13R-31L
REIL Rwy 4R, 22L, and 31C
RLLS Rwy 13C and 31C



1100 2600 EON

VGSJ and RNAV glidepath not coincident (VGSJ Angle 3.00/TCH 63).

HOBEL 1700



CATEGORY	A	B	C	D
RNP 0.10 DA		905/45	292 (300-¾)	
RNP 0.20 DA		965/55	352 (400-1)	
RNP 0.30 DA		1029/60	416 (500-1½)	

AUTHORIZATION REQUIRED