

APP CRS <b>034°</b>	Rwy Idg TDZE Apt Elev	<b>6095</b> <b>4186</b> <b>4187</b>
------------------------	-----------------------------	---

# RNAV (GPS) RWY 3

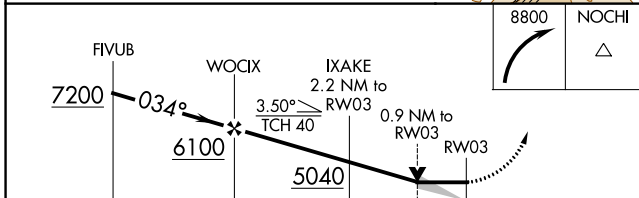
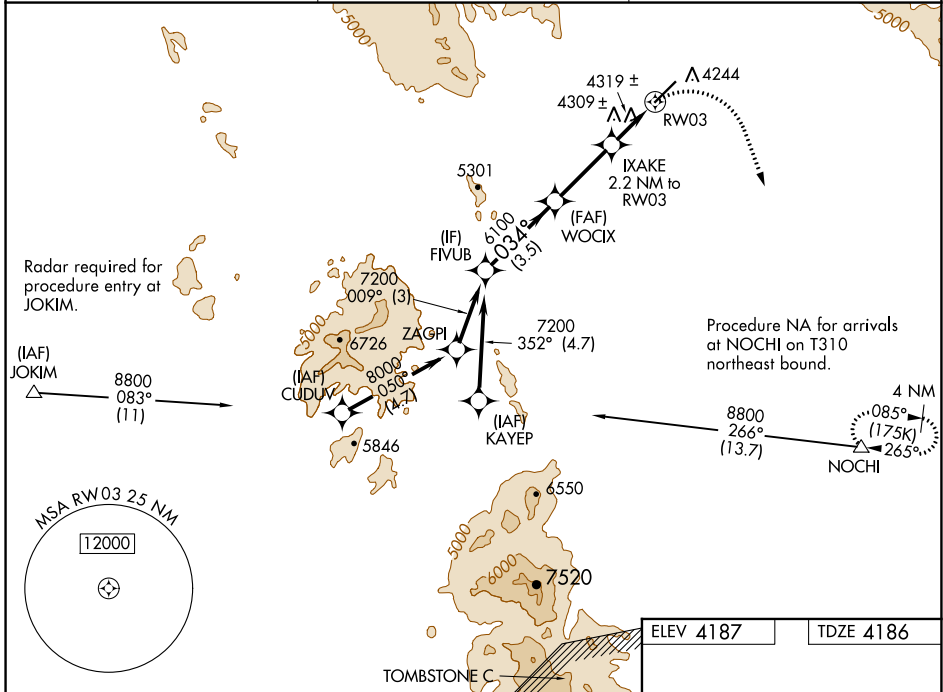
COCHISE COUNTY (P33)

RNP APCH - GPS.

When local altimeter setting not received, use Douglas Bisbee altimeter setting. VDP NA with Douglas Bisbee altimeter setting.

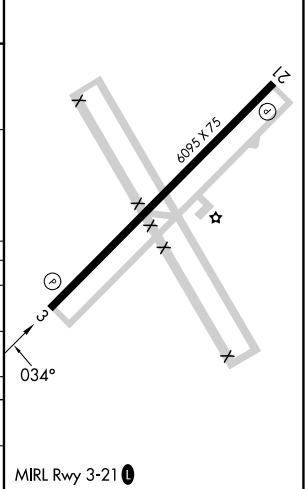
MISSED APPROACH: Climbing right turn to 8800 direct NOCHI and hold, continue climb-in-hold to 8800.

AWOS-3PT <b>119.025</b>	ALBUQUERQUE CENTER <b>134.45 327.15</b>	UNICOM <b>122.8 (CTAF) 0</b>
----------------------------	--	---------------------------------



ELEV 4187	TDZE 4186
-----------	-----------

CATEGORY	A	B	C	D
LNAV MDA	4560-1	374 (400-1)		NA
CIRCLING	4600-1 413 (500-1)	4660-1 473 (500-1)		NA
DOUGLAS BISBEE ALTIMETER SETTING MINIMUMS				
LNAV MDA	4680-1	494 (500-1)		NA
CIRCLING	4720-1 533 (600-1)	4780-1 593 (600-1)		NA



SW-4, 05 SEP 2024 to 03 OCT 2024

SW-4, 05 SEP 2024 to 03 OCT 2024