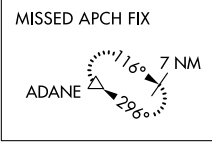
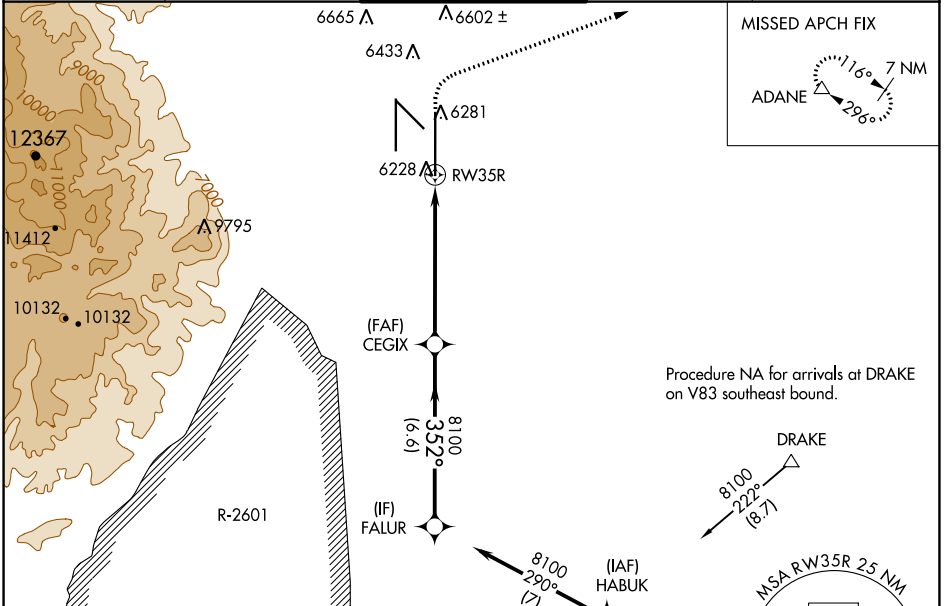


WAAS CH 53602 W35B	APP CRS 352°	Rwy Idg TDZE Apt Elev	13500 6118 6187
--	------------------------	-----------------------------	--

RNAV (GPS) Y RWY 35R

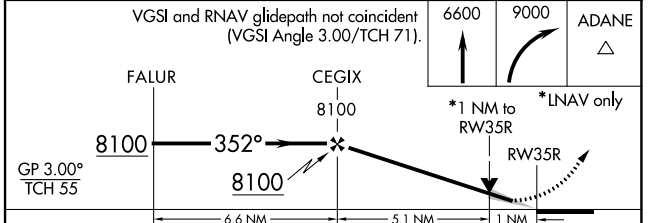
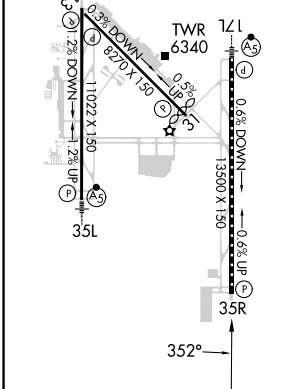
CITY OF COLORADO SPRINGS MUNI (COS)

▽ ▲	For uncompensated Baro-VNAV systems, LNAV/VNAV NA below -21°C (-5°F) or above 39°C (103°F). DME/DME RNP-0.3 NA. RADAR monitoring required when R-2601 in use.	MISSED APPROACH: Climb to 6600 then climbing right turn to 9000 direct ADANE and hold.		
ATIS 125.0 254.3	SPRINGS APP CON 124.0 257.875	SPRINGS TOWER 119.9 360.6	GND CON 121.7 348.6	CLNC DEL 134.45 363.125



Procedure NA for arrivals at DRAKE on V83 southeast bound.

ELEV 6187	D	TDZE 6118
MIRL Rwy 13-31		
HIRL Rwys 17R-35L and 17L-35R		
REIL Rwys 13, 17R, 31, and 35R		
TDZ/CL Rwys 17L and 35R		



GP 3.00° TCH 55	6.6 NM		5.1 NM		1 NM
CATEGORY	A	B	C	D	
LPV DA	6318/40		200 (200-¾)		
LNAV/VNAV DA	6399/45		281 (300-¾)		
LNAV MDA	6500/55	382 (400-1)	6500/60	382 (400-1¼)	
C CIRCLING	6740-1	6800-1	7040-2½	7260-3	
	553 (600-1)	613 (700-1)	853 (900-2½)	1073 (1100-3)	

SW-1, 05 SEP 2024 to 03 OCT 2024

SW-1, 05 SEP 2024 to 03 OCT 2024