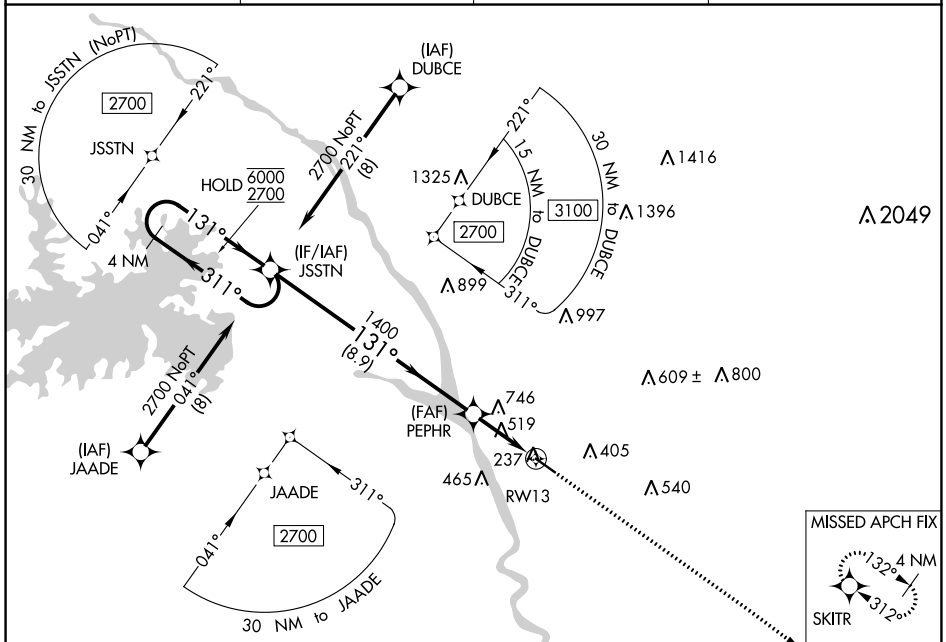


|  |                        |   |
|--|------------------------|---|
| WAAS<br>CH <b>49042</b><br><b>W13A</b> | APP CRS<br><b>131°</b> | Rwy Idg <b>4999</b><br>TDZE <b>193</b><br>Apt Elev <b>193</b> |
|--|------------------------|---|

# RNAV (GPS) RWY 13

JIM HAMILTON L B OWENS (CUB)

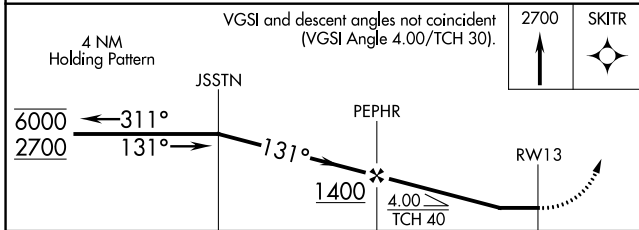
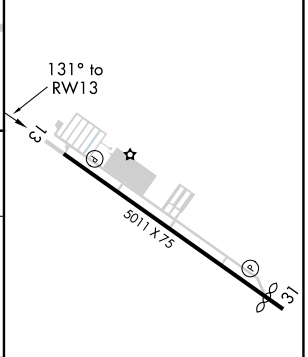
|   |  |   |  |
|---|--|---|--|
| RNP APCH.   |  | MISSED APPROACH: Climb to 2700 direct SKITR and hold. |  |
| <p>Procedure NA at night. Rwy 13 helicopter visibility reduction below 1 SM NA.</p> |  | ASOS<br><b>118.675</b>                                | COLUMBIA APP CON<br><b>133.4 285.6</b> |
|   |  | CLNC DEL<br><b>124.4</b>                              | UNICOM<br><b>123.075 (CTAF)</b>        |



SE-2, 05 SEP 2024 to 03 OCT 2024

SE-2, 05 SEP 2024 to 03 OCT 2024

|          |          |
|----------|----------|
| ELEV 193 | TDZE 193 |
|----------|----------|



| CATEGORY | A                     | B                       | C  | D |
|----------|-----------------------|-------------------------|----|---|
| LP MDA   | 780-1                 | 587 (600-1)             | NA |   |
| LNAV MDA | 1060-1<br>867 (900-1) | 1060-1¼<br>867 (900-1¼) | NA |   |

REIL Rwy 13 and 31  
MIRL Rwy 13-31