

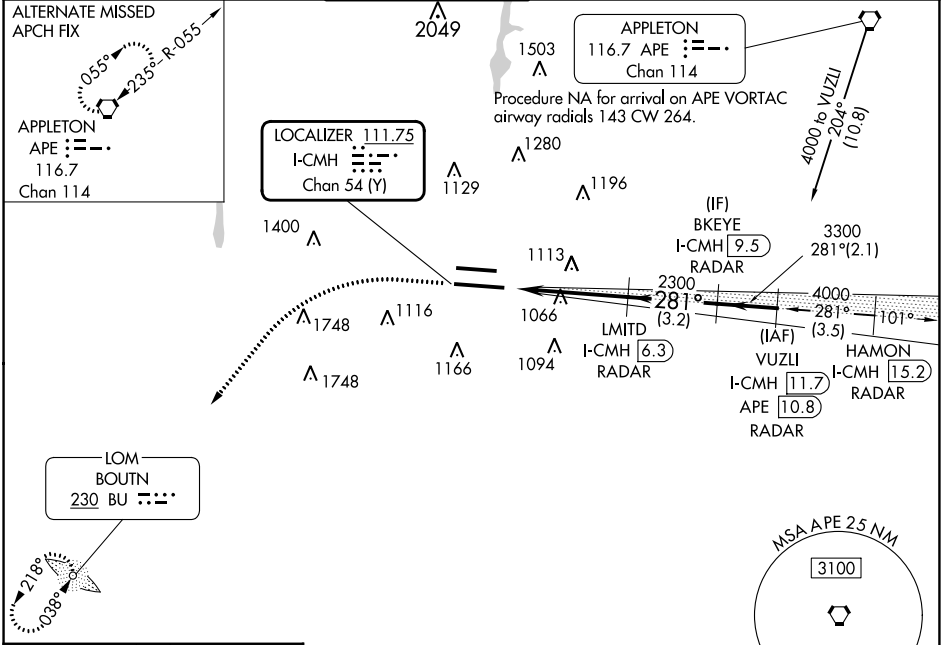
LOC/DME I-CMH <b>111.75</b> Chan <b>54 (Y)</b>	APP CRS <b>281°</b>	Rwy Idg <b>10113</b> TDZE <b>815</b> Apt Elev <b>815</b>
--	------------------------	--

# ILS RWY 28L (SA CAT I & II)

JOHN GLENN COLUMBUS INTL (CMH)

ADF required. DME or RADAR required.	MALSR 	MISSED APPROACH: Climb to 1400 then climbing left turn to 3000 direct BU LOM and hold.
Simultaneous approach authorized. SA CAT I, SA CAT II: Requires specific OPSPEC, MSPEC, or LOA approval.		

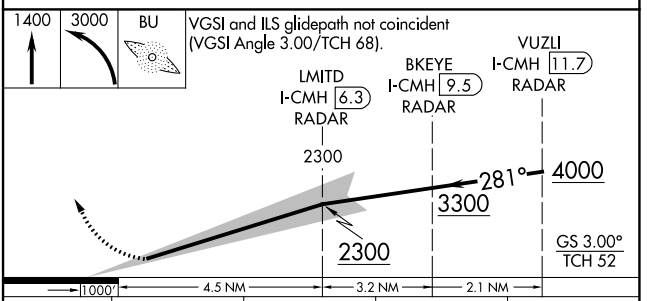
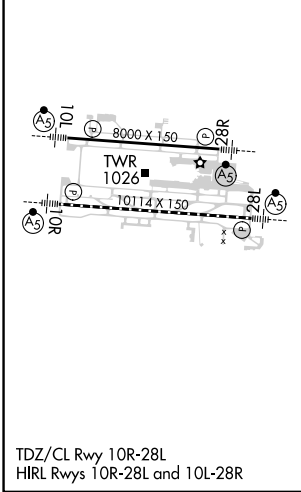
D-ATIS <b>124.6</b>	COLUMBUS APP CON <b>125.95 371.975</b>	COLUMBUS TOWER <b>132.7 257.8</b>	GND CON <b>121.9 348.6</b>	CLNC DEL <b>126.3</b>	CPDLC
------------------------	---	--------------------------------------	-------------------------------	--------------------------	-------



EC-2, 05 SEP 2024 to 03 OCT 2024

EC-2, 05 SEP 2024 to 03 OCT 2024

ELEV <b>815</b>	<b>D</b>	TDZE <b>815</b>
-----------------	----------	-----------------



CATEGORY	A	B	C	D
S-ILS 28L	SA CAT I RA 157/14 150 DA 965			
S-ILS 28L	SA CAT II RA 100/12 100 DA 915			

**SA CATEGORY I & II ILS - SPECIAL AIRCREW & AIRCRAFT CERTIFICATION REQUIRED**