

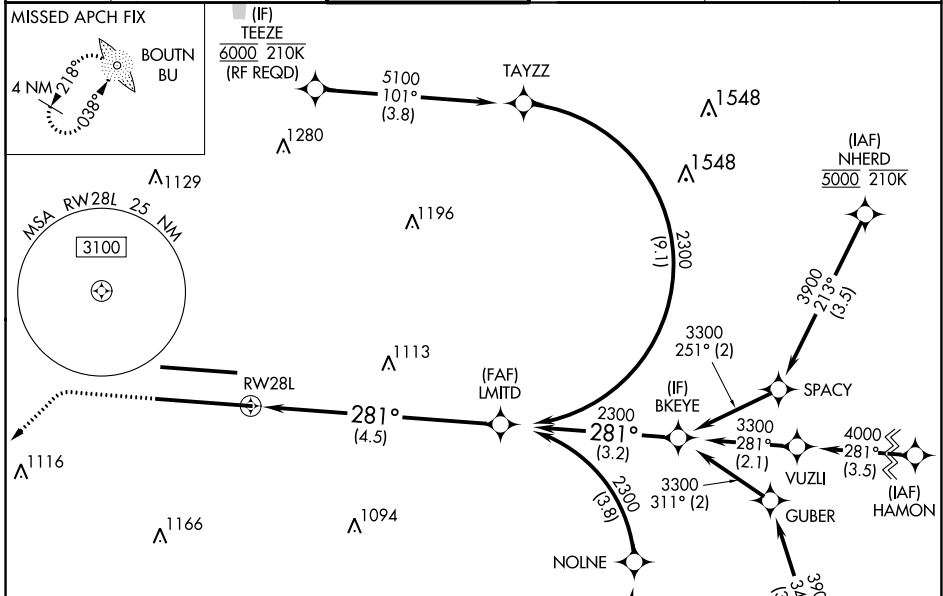
APP CRS 281°	Rwy Idg TDZE Apt Elev	10113 815 815
------------------------	-----------------------------	--

RNAV (RNP) Z RWY 28L

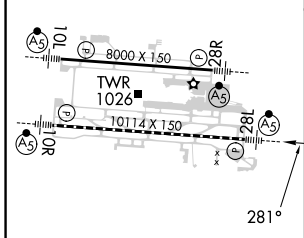
JOHN GLENN COLUMBUS INTL (CMH)

RNP AR APCH.	MALS R	MISSED APPROACH: Climb to 1400 then climbing left turn to 3000 direct BOUTN LOM and hold.
For uncompensated Baro-VNAV systems, procedure NA below -19°C or above 54°C. For inop ALS, increase RNP 0.30 all Cats visibility to 1 1/2 SM. Simultaneous approach authorized.		

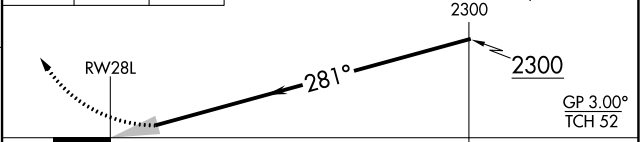
D-ATIS 124.6	COLUMBUS APP CON 125.95 371.975	COLUMBUS TOWER 132.7 257.8	GND CON 121.9 348.6	CLNC DEL 126.3	CPDLC
------------------------	---	--------------------------------------	-------------------------------	--------------------------	-------



ELEV 815	D	TDZE 815
----------	----------	----------



(IF) JESCE 6000 210K (RF REQD)	1400	3000	BU	VGSI and RNAV glidepath not coincident (VGSI Angle 3.00/ TCH 68).
4800 101° (3.5)				LMITD See planview for multiple IF locations.



CATEGORY	A	B	C	D
RNP 0.17 DA		1147/26	332 (400-1/2)	
RNP 0.30 DA		1314/50	499 (500-1)	

TDZ/CL Rwy 10R-28L
HIRL Rwy 10R-28L and 10L-28R

AUTHORIZATION REQUIRED

EC-2, 05 SEP 2024 to 03 OCT 2024

EC-2, 05 SEP 2024 to 03 OCT 2024