

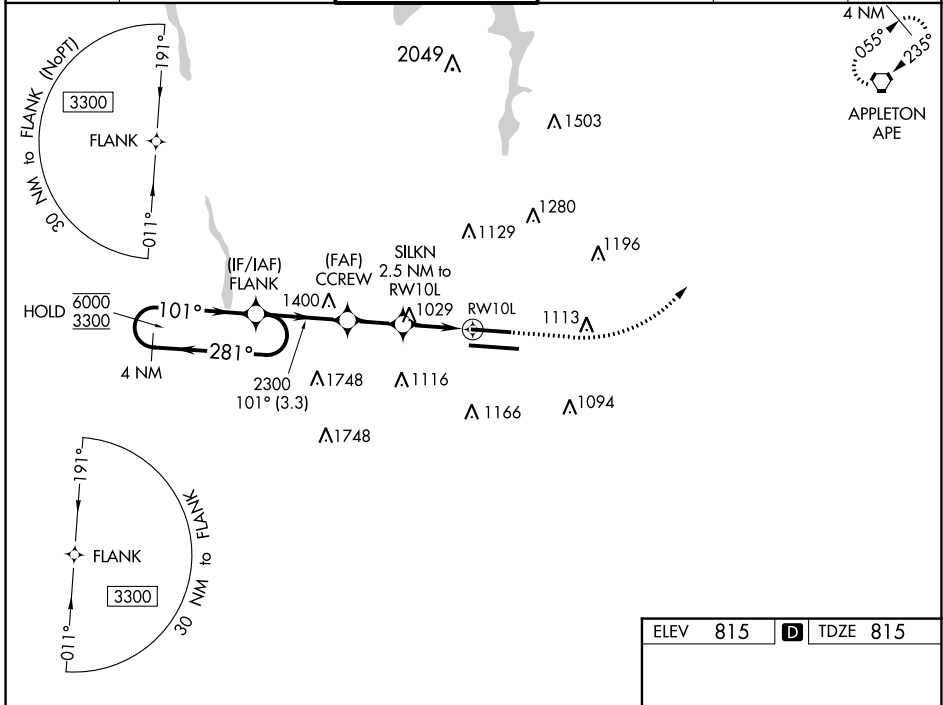
WAAS CH <b>40299</b> <b>W10B</b>	APP CRS <b>101°</b>	Rwy Idg TDZE Apt Elev	<b>8000</b> <b>815</b> <b>815</b>
--	------------------------	-----------------------------	---

# RNAV (GPS) Y RWY 10L

JOHN GLENN COLUMBUS INTL (CMH)

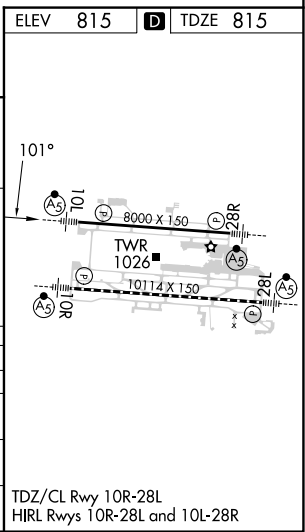
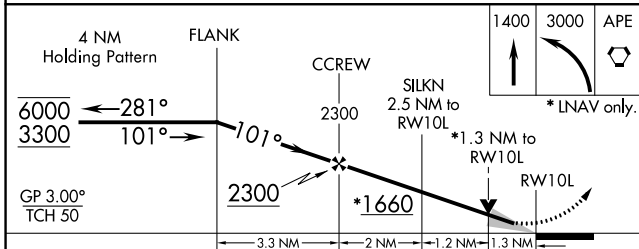
RNP APCH ▼ For uncompensated Baro-VNAV systems, LNAV/VNAV NA below -19°C or above 54°C. ▲ LNAV procedure NA during simultaneous operations. Use of FD or AP providing RNAV track guidance required during simultaneous operations. Simultaneous approach authorized. For inop ALS, increase LNAV Cat C/D visibility to 1½ SM. # RVR 1800 authorized with use of FD or AP or HUD to DA.	MALSRL 	MISSED APPROACH: Climb to 1400 then climbing left turn to 3000 direct APE VORTAC and hold.
---	------------	---

D-ATIS <b>124.6</b>	COLUMBUS APP CON <b>125.95 371.975</b>	COLUMBUS TOWER <b>132.7 257.8</b>	GND CON <b>121.9 348.6</b>	CLNC DEL <b>126.3</b>	CPDLC
------------------------	---	--------------------------------------	-------------------------------	--------------------------	-------



EC-2, 05 SEP 2024 to 03 OCT 2024

EC-2, 05 SEP 2024 to 03 OCT 2024



ELEV 815	TDZE 815			
4 NM Holding Pattern	FLANK			
6000 ← 281°	→ 101°			
3300				
GP 3.00°	TCH 50			
3.3 NM	2 NM	1.2 NM	1.3 NM	
2300	*1660			
CCREW	SILKN	RWY10L	RWY10L	
2.5 NM to RWY10L	*1.3 NM to RWY10L			
1400	3000	APE		
			*INAV only.	
CATEGORY	A	B	C	D
LPV DA #		1015/24	200 (200-½)	
LNAV/VNAV DA		1197/35	382 (400-⅓)	
LNAV MDA	1280/24	465 (500-½)	1280/50	465 (500-1)
CIRCLING	1340-1	525 (600-1)	1520-2 705 (800-2)	1520-2¼ 705 (800-2¼)