

# BACHMAN ONE DEPARTURE

**TOP ALTITUDE:  
5000**

**LITTLE ROCK**  
113.9 IIT  
Chan 86

**TEXARKANA**  
116.3 TXK  
Chan 110

**BONHAM**  
114.6 BYP  
Chan 93

**COWBOY**  
116.2 CVE  
Chan 109

**MAVERICK**  
113.1 TTT  
Chan 78

**LOCALIZER** 111.1  
I-DPX  
Chan 48

**BELCHER**  
117.4 EIC  
Chan 121

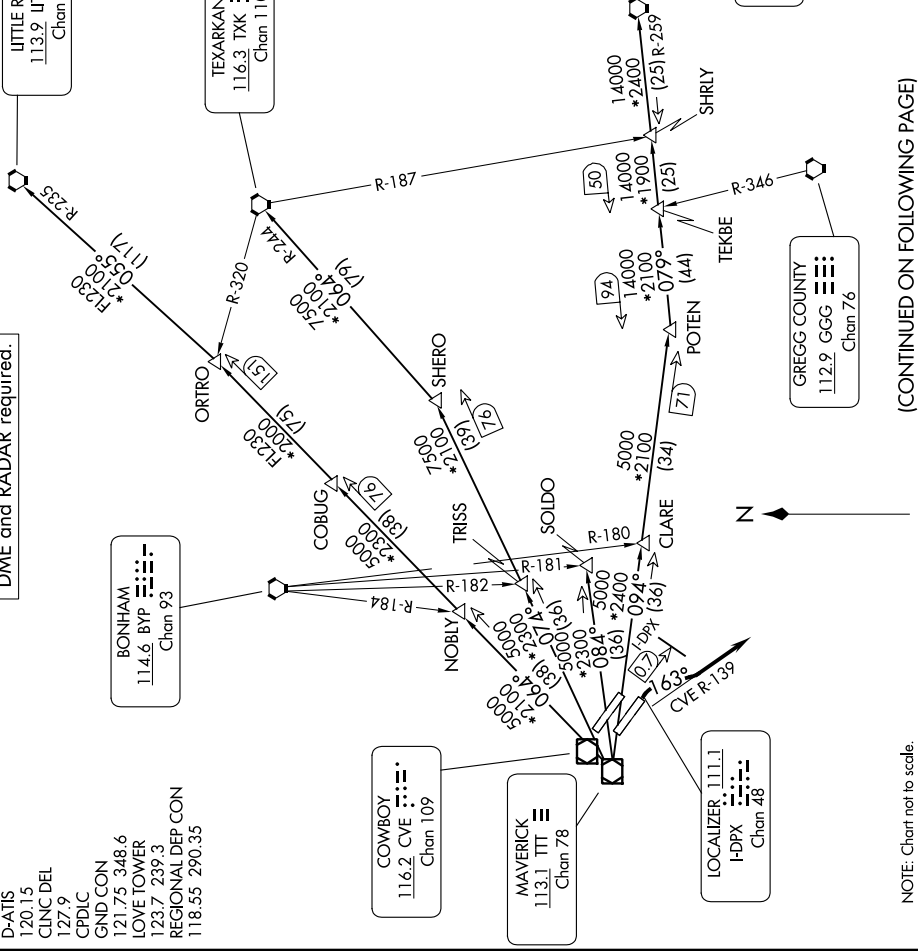
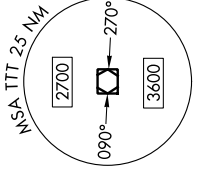
**GREGG COUNTY**  
112.9 GGG  
Chan 76

DME and RADAR required.

D-ATIS 120.15  
CLNC DEL 127.9  
CPDIC  
GND CON 121.75 348.6  
LOVE TOWER 123.7 239.3  
REGIONAL DEP CON 118.55 290.35

**TAKEOFF MINIMUMS**  
Rwys 13L, 31L/R: NA - Noise Abatement.  
Rwy 13R: Standard with minimum climb of 482'/NM to 1700.

**NOTE:** This DP is to be used only upon assignment by Love Tower normally between 2100-0600 LCL time.  
**NOTE:** SOLDO Transition: ATC assigned.  
**NOTE:** BELCHER Transition: For aircraft inbound to Jackson, Monroe and Shreveport terminal areas.



(CONTINUED ON FOLLOWING PAGE)

NOTE: Chart not to scale.