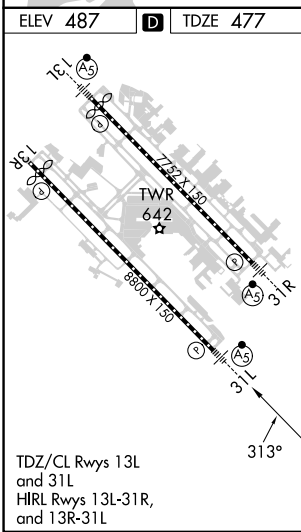
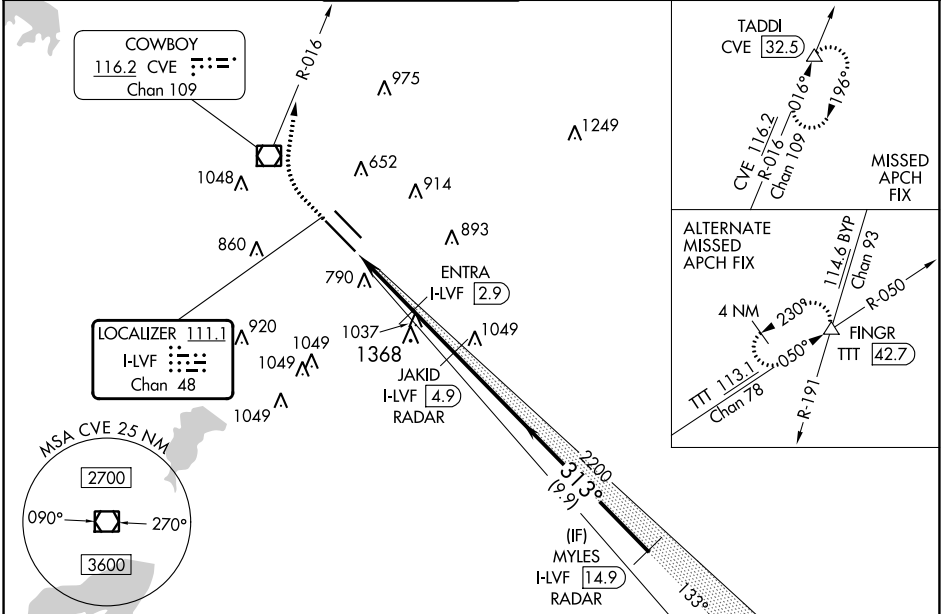


LOC/DME I-LVF 111.1 Chan 48	APP CRS 313°	Rwy Idg TDZE 477 Apt Elev 487	8000
--	------------------------	---	-------------

ILS or LOC RWY 31L

DALLAS LOVE FLD (DAL)

DME required. RADAR required for procedure entry.		MALS R	MISSED APPROACH: Climb to 4000 direct CVE VOR/DME and on CVE R-016 to TADDI/CVE 32.5 DME and hold.		
Simultaneous approach authorized.					
D-ATIS 120.15	REGIONAL APP CON NORTH 124.3 282.275 SOUTH 125.2 343.65	LOVE TOWER 123.7 239.3	GND CON 121.75 348.6	CLNC DEL 127.9	CPDLC



ELEV 487	D	TDZE 477				
4000	CVE	CVE R-016	TADDI	JAKID I-LVF 4.9	MYLES I-LVF 14.9	
				RADAR	RADAR	
	I-LVF DME ANTENNA	ENTRA I-LVF 2.9		2200	2500	
	I-LVF 0.2	I-LVF 2.3		1520	2200	GS 3.08° TCH 55
	2.5 NM	0.6 NM	2.1 NM	9.9 NM		
CATEGORY	A		B		C	D
S-ILS 31L			677/18		200 (200-½)	
S-LOC 31L	1340/24 863 (900-½)	1340/40 863 (900-¾)	1340-2		863 (900-2)	
C CIRCLING	1340-1¼	853 (900-1¼)	1340-2½ 853 (900-2½)	1520-3 1033 (1100-3)		

SC-2, 05 SEP 2024 to 03 OCT 2024

SC-2, 05 SEP 2024 to 03 OCT 2024