

KRUMM ONE DEPARTURE

D-ATIS
120.15
CLNC DEL
127.9
CPDLC
GND CON
121.75 348.6
LOVE TOWER
123.7 239.3
REGIONAL DEP CON
118.55 290.35

**TOP ALTITUDE:
5000**

DME and RADAR required.

- NOTE: This DP is to be used only upon assignment by Love Tower normally between 2100-0600 LCL time.
- NOTE: WILL ROGERS Transition: For all aircraft inbound to the Oklahoma City area or overflying IRW VORTAC.
- NOTE: TULSA Transition: For all aircraft overflying TUL VORTAC.
- NOTE: OKMULGEE Transition: For all aircraft overflying OKM VOR/DME proceeding on J181 BDF VORTAC proceeding to destinations in the Chicago Terminal area and north.

TULSA
114.4 TUL Chan 91

OKMULGEE
114.9 OKM Chan 96

WILL ROGERS
114.1 IRW Chan 88

ARDMORE
116.7 ADM Chan 114

BONHAM
114.6 BYP Chan 93

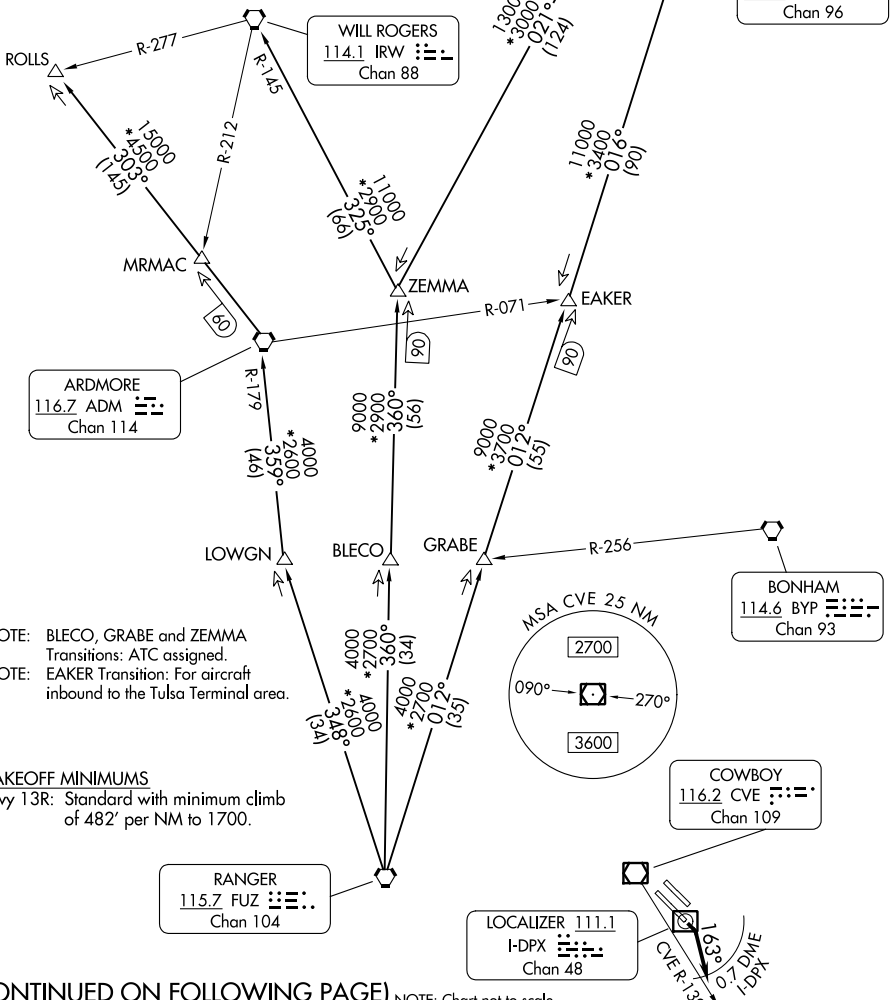
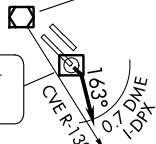
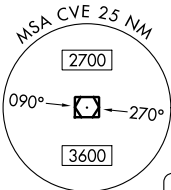
COWBOY
116.2 CVE Chan 109

RANGER
115.7 FUZ Chan 104

LOCALIZER 111.1
I-DPX Chan 48

- NOTE: BLECO, GRABE and ZEMMA Transitions: ATC assigned.
- NOTE: EAKER Transition: For aircraft inbound to the Tulsa Terminal area.

TAKEOFF MINIMUMS
Rwy 13R: Standard with minimum climb of 482' per NM to 1700.



SC-2, 05 SEP 2024 to 03 OCT 2024

SC-2, 05 SEP 2024 to 03 OCT 2024

(CONTINUED ON FOLLOWING PAGE) NOTE: Chart not to scale.

KRUMM ONE DEPARTURE