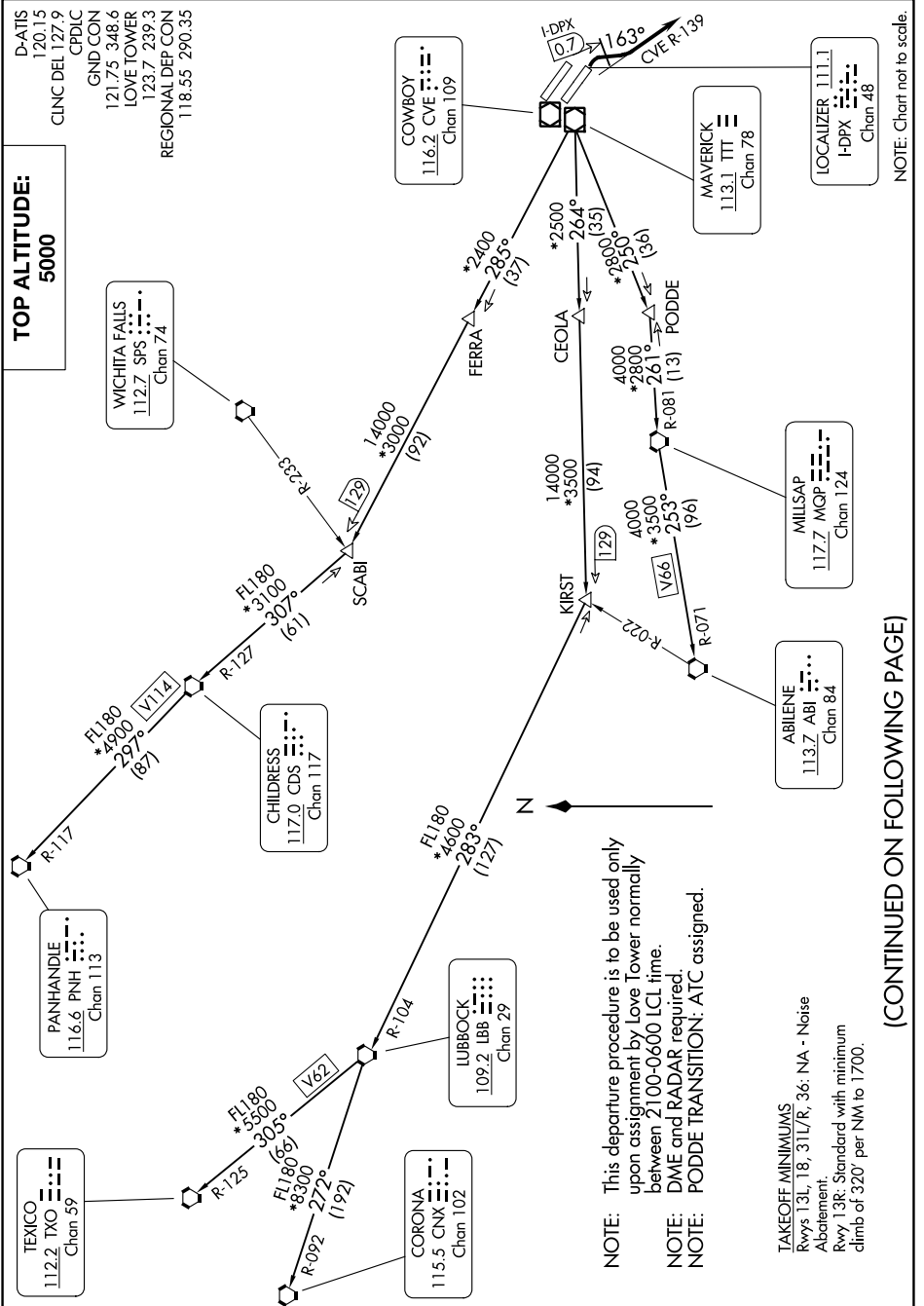


LOVE SIX DEPARTURE

SC-2, 05 SEP 2024 to 03 OCT 2024



TOP ALTITUDE:
5000

NOTE: Chart not to scale.

NOTE: This departure procedure is to be used only upon assignment by Love Tower normally between 2100-0600 LCL time.

NOTE: DME and RADAR required.

NOTE: PODDE TRANSITION: ATC assigned.

TAKEOFF MINIMUMS
Rwys 13L, 18, 31L/R, 36: NA - Noise Abatement.
Rwy 13R: Standard with minimum climb of 320' per NM to 1700.

(CONTINUED ON FOLLOWING PAGE)

SC-2, 05 SEP 2024 to 03 OCT 2024