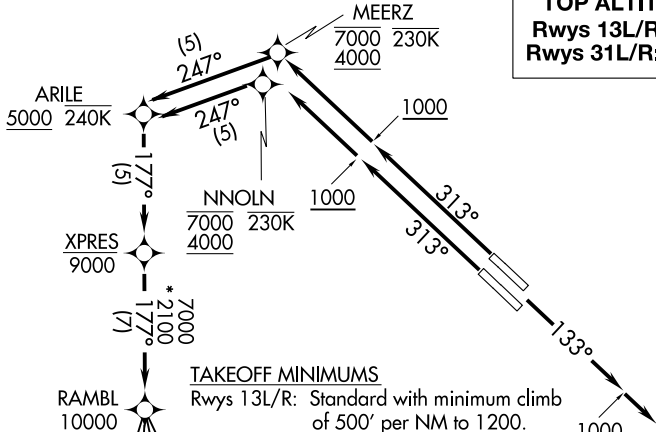


# RAMBL SIX DEPARTURE (RNAV)

D-ATIS  
120.15  
CLNC DEL  
127.9  
CPDLC  
GND CON  
121.75 348.6  
LOVE TOWER  
123.7 239.3  
REGIONAL DEP CON  
126.475 363.15

**TOP ALTITUDE:**  
Rwys 13L/R: 3000  
Rwys 31L/R: 10000

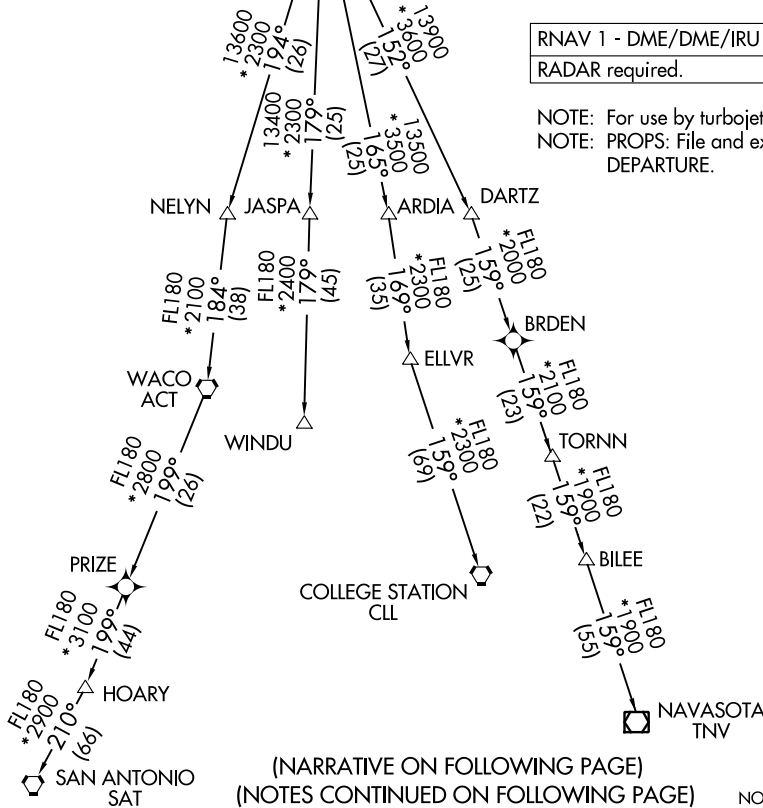


### TAKEOFF MINIMUMS

Rwys 13L/R: Standard with minimum climb of 500' per NM to 1200.  
Rwys 31L/R: Standard with minimum climb of 500' per NM to 1000.

RNAV 1 - DME/DME/IRU or GPS required.  
RADAR required.

NOTE: For use by turbojet aircraft only.  
NOTE: PROPS: File and expect JOE POOL DEPARTURE.



(NARRATIVE ON FOLLOWING PAGE)  
(NOTES CONTINUED ON FOLLOWING PAGE)

NOTE: Chart not to scale.

SC-2, 05 SEP 2024 to 03 OCT 2024

SC-2, 05 SEP 2024 to 03 OCT 2024

# RAMBL SIX DEPARTURE (RNAV)