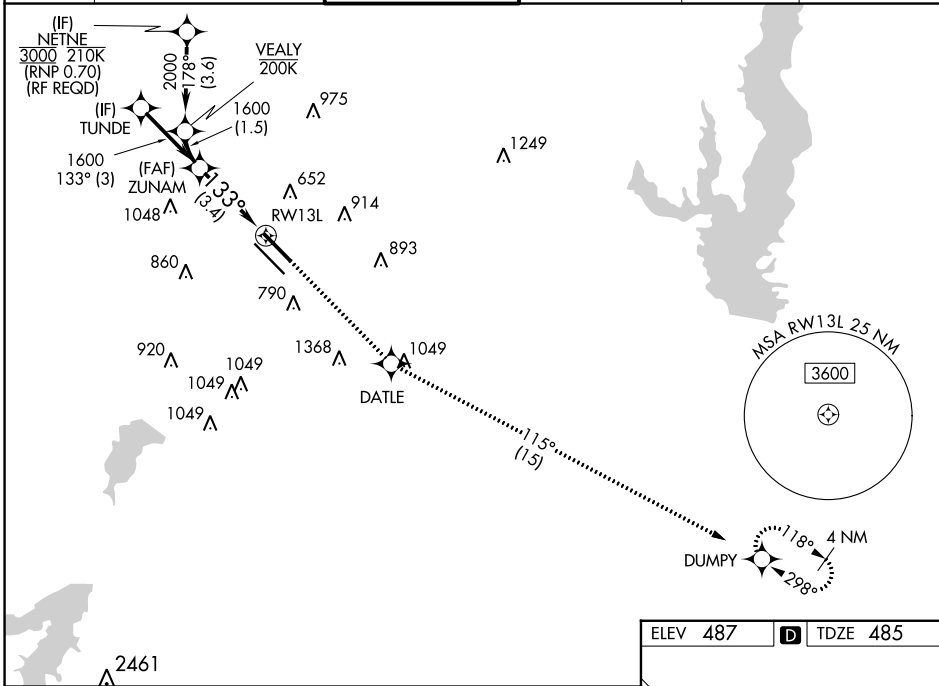


APP CRS	Rwy Idg	7352
133°	TDZE	485
	Apt Elev	487

RNAV (RNP) X RWY 13L

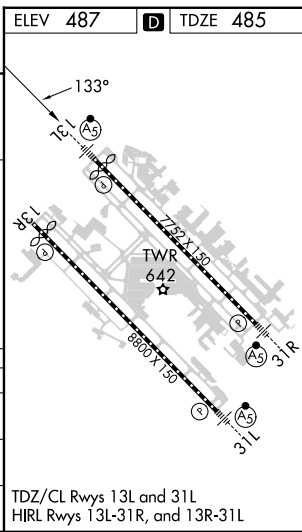
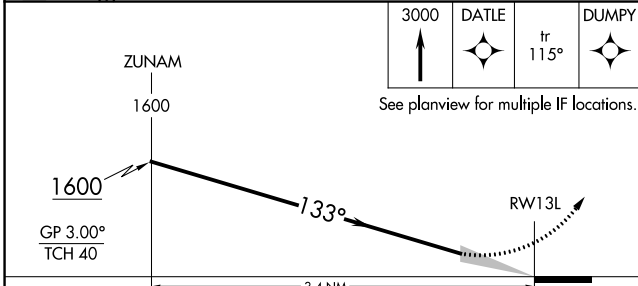
DALLAS LOVE FLD (DAL)

RNP AR APCH.		MALSR	MISSED APPROACH: Climb to 3000 direct DATLE and on track 115° to DUMPY and hold.		
Simultaneous approach authorized. For uncompensated Baro-VNAV systems, procedure NA below -6°C or above 54°C. For inop ALS, increase RNP 0.11 all Cats visibility to RVR 4500.					
D-ATIS	REGIONAL APP CON	LOVE TOWER	GND CON	CINC DEL	CPDLC
120.15	NORTH 124.3 282.275 SOUTH 125.2 343.65	123.7 239.3	121.75 348.6	127.9	



SC-2, 05 SEP 2024 to 03 OCT 2024

SC-2, 05 SEP 2024 to 03 OCT 2024



ELEV 487	D TDZE 485			
See planview for multiple IF locations.				
CATEGORY	A	B	C	D
RNP 0.11 DA		754/24	269 (300-½)	
RNP 0.30 DA		846/40	361 (400-¾)	
AUTHORIZATION REQUIRED				

TDZ/CL Rwws 13L and 31L
HIRL Rwws 13L-31R, and 13R-31L

RNAV (RNP) X RWY 13L