

# SNSET FOUR DEPARTURE (RNAV)

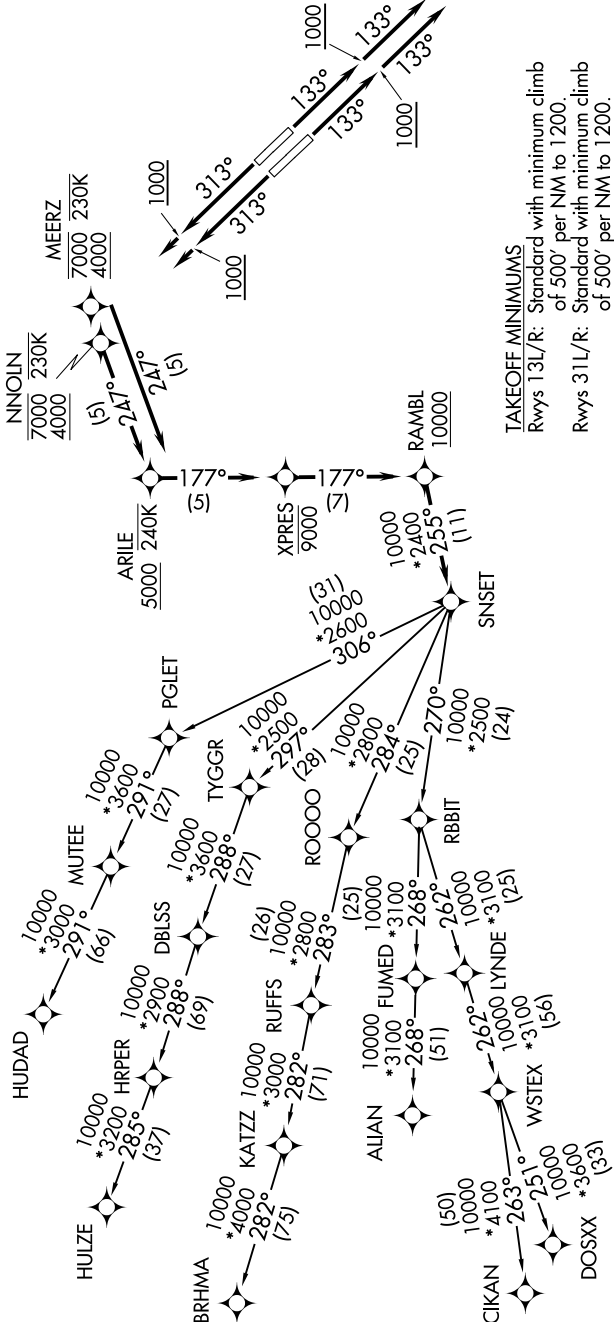
SC-2, 05 SEP 2024 to 03 OCT 2024

D-ATIS 120.15  
 CLNC DEL 127.9  
 CPDLC  
 GND CON 121.75 348.6  
 LOVE TOWER 123.7 239.3  
 REGIONAL DEP CON 126.475 363.15



NOTE: RADAR required.  
 NOTE: DME/DME/IRU or GPS required.  
 NOTE: RNAV 1.  
 NOTE: For use by turbojet aircraft only.  
 NOTE: RNAV-capable props: File and expect the SWABR RNAV SID.  
 NOTE: ALIEN TRANSITION: ATC assigned only.  
 NOTE: Aircraft landing in Lubbock terminal area file the BRHMA enroute transition.

**TOP ALTITUDE:**  
**RWYS 13L/R: 3000**  
**RWYS 31L/R: 10000**



**TAKEOFF MINIMUMS**  
 Rwy 13L/R: Standard with minimum climb of 500' per NM to 1200.  
 Rwy 31L/R: Standard with minimum climb of 500' per NM to 1200.

(NARRATIVE ON FOLLOWING PAGE)  
 (NOTES CONTINUED ON FOLLOWING PAGE)

NOTE: Chart not to scale.

SC-2, 05 SEP 2024 to 03 OCT 2024

# SNSET FOUR DEPARTURE (RNAV)