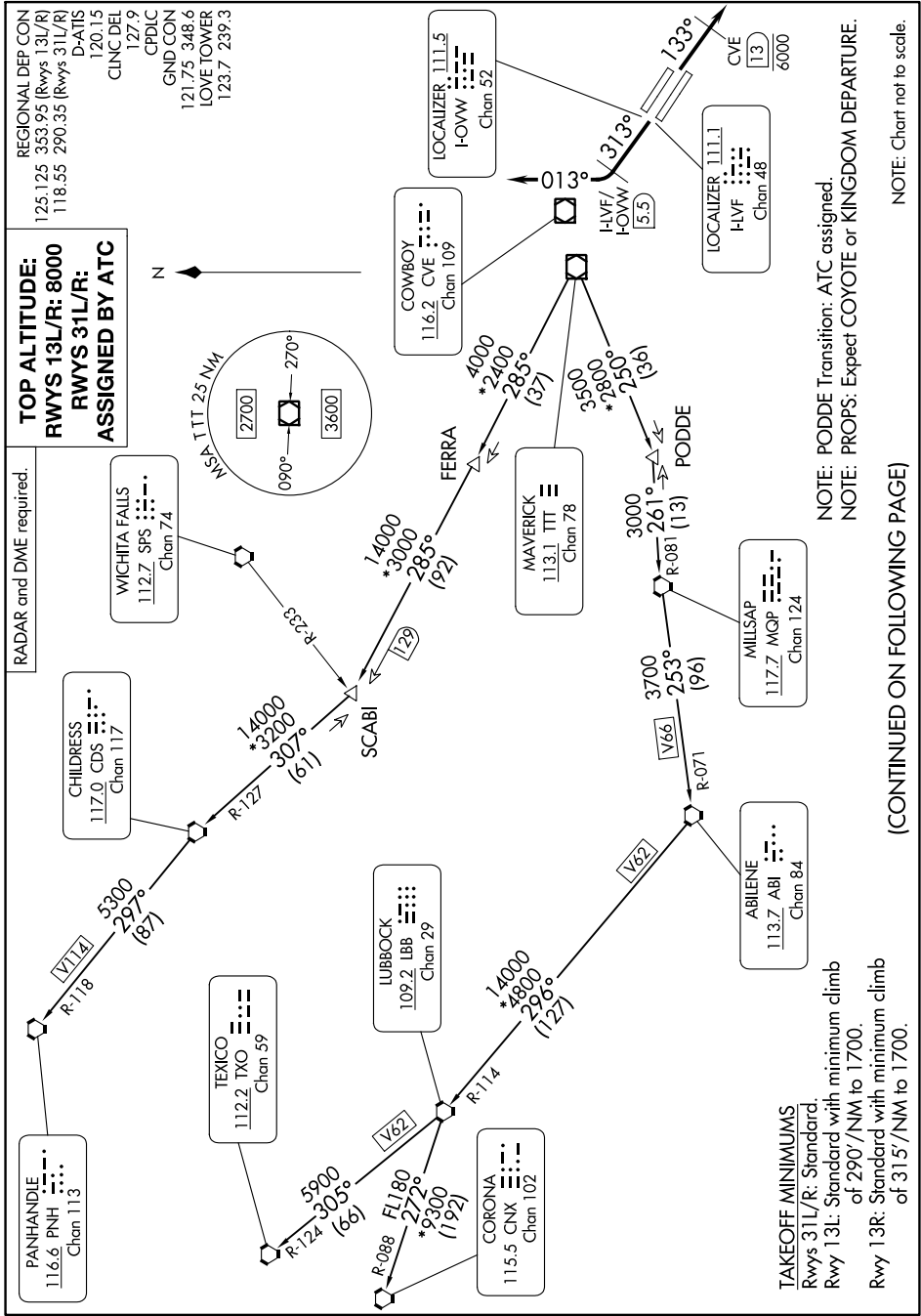


WORTH ONE DEPARTURE

SC-2, 05 SEP 2024 to 03 OCT 2024



WORTH ONE DEPARTURE

(CONTINUED ON FOLLOWING PAGE)

SC-2, 05 SEP 2024 to 03 OCT 2024

NOTE: Chart not to scale.

NOTE: POBDE Transition: ATC assigned.
NOTE: PROPS: Expect COYOTE or KINGDOM DEPARTURE.

TAKEOFF MINIMUMS
RWY 31L/R: Standard.
RWY 13L: Standard with minimum climb of 290°/NM to 1700.
RWY 13R: Standard with minimum climb of 315°/NM to 1700.