

DAYTON, OHIO

# RNAV (GPS) RWY 23R

24193

APCH CRS	Rwy Idg	12,600
233°	TDZE	823
	Arprt Elev	823

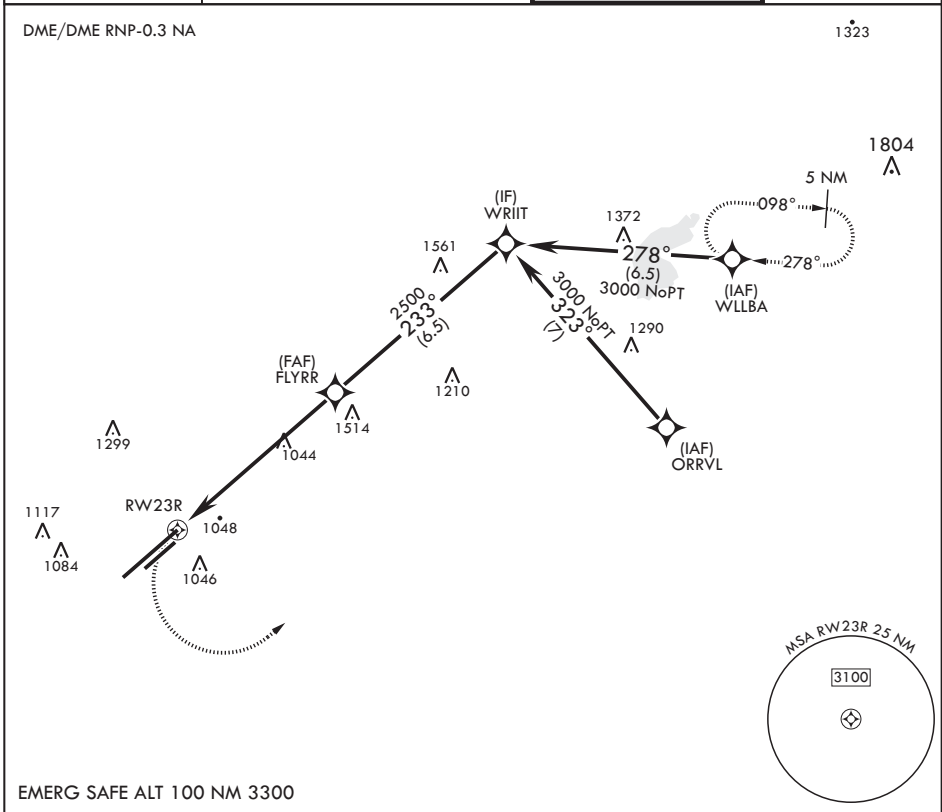
- (USAF)

WRIGHT PATTERSON AFB (KFFO)

**⚠** \* When ALS inop, increase CAT AB RVR to 55, vis to 1 mile; CAT CD vis to 1 3/8 miles.  
 \*\* When Rwy 23R VGSI inop, circling to Rwy 23R NA at night.

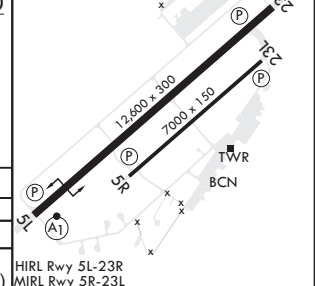
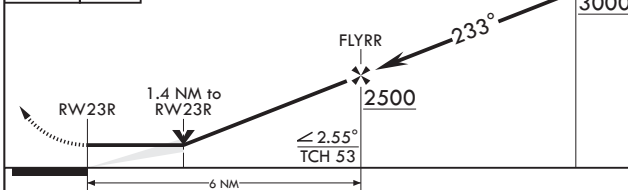
ALS-1 MISSED APPROACH: Turn left climb to 3000 direct WLLBA waypoint and hold.

ATIS 124.475 269.9	COLUMBUS APP CON/DEP CON 118.85 269.275	PATTERSON TOWER 126.9 281.45	GND CON 121.8 335.8
-----------------------	--	---------------------------------	------------------------



EMERG SAFE ALT 100 NM 3300

3000	WLLBA	VGSI and descent angles not coincident. (VGSI angle 3.00 TCH 53)	WRIT	ELEV 823	TDZE 823
------	-------	--	------	----------	----------



CATEGORY	A	B	C	D
LNAV MDA*	1320/24 497 (500-½)		1320/50 497 (500-1)	
<b>C</b> CIRCLING**	1380-1 557 (600-1)	1440-1 617 (700-1)	1560-2 737 (800-2)	1620-2½ 797 (800-2½)

HIRL Rwy 5L-23R  
MIRL Rwy 5R-23L

DAYTON, OHIO

39°50'N - 84°03'W

WRIGHT PATTERSON AFB (KFFO)

Amdt 5 13OCT16

# RNAV (GPS) RWY 23R

EC-2, 05 SEP 2024 to 03 OCT 2024

EC-2, 05 SEP 2024 to 03 OCT 2024