

DEL RIO, TEXAS

HI-ILS or LOC/DME Z RWY 13C

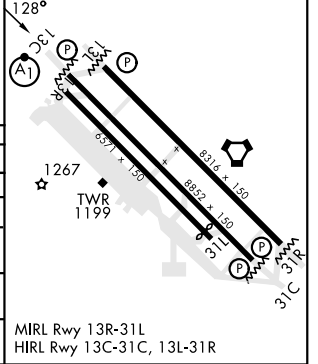
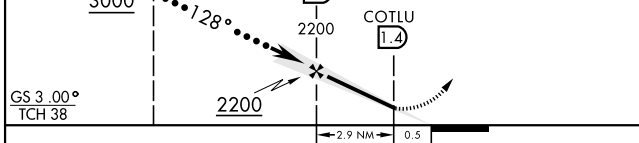
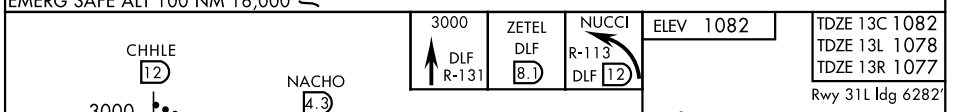
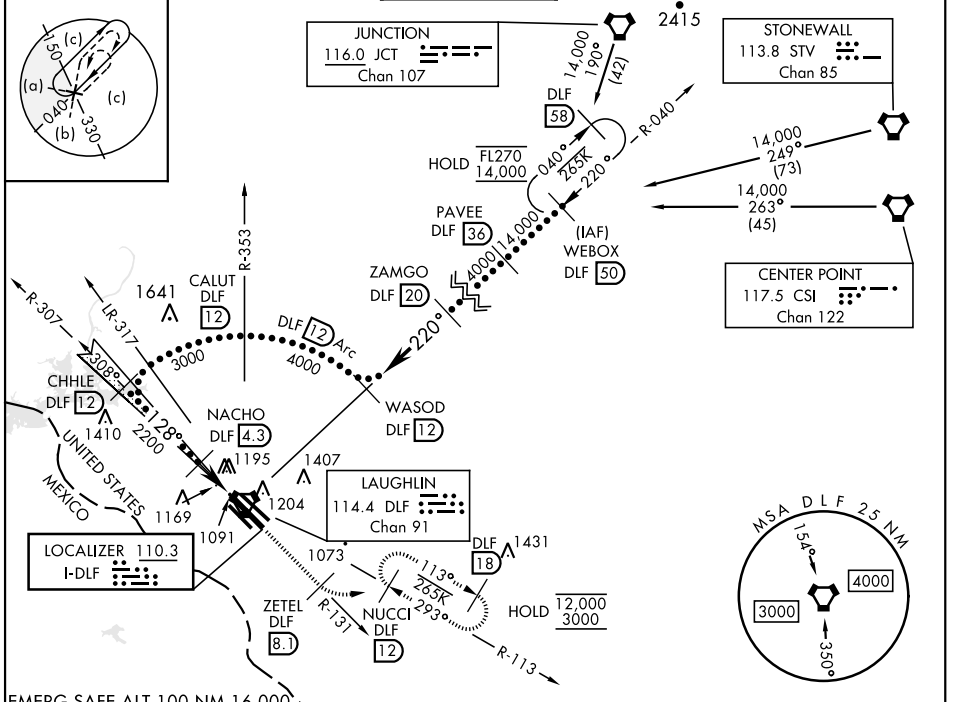
LOC I-DLF **110.3** APCH CRS **128°**  
 Rwy Idg **8852 8316 6571**  
 TDZE **1082 1078 1077**  
 Arprt Elev **1082**

AL-111 [USAF] LAUGHLIN AFB (KDLF)

▽ \* When ALS inop, increase RVR to 40 and vis to ¾ mile.  
 \*\* When ALS inop, increase CAT AB RVR to 55 and vis to 1 mile, CAT CDE RVR to 50 and vis to 1 mile.  
 \*\*\* Circling W of Rwy 13R-31L not authorized.

ALSF-1 **(A1)** MISSED APPROACH: Climb to 3000 on DLF VORTAC R-131 to 8.1 DME (ZETEL), then turn left to intercept DLF R-113 to 12 DME (NUCCI) and hold.

ATIS * <b>114.4 269.9</b>	DEL RIO APP CON <b>119.6 259.1</b>	TOWER * <b>125.2 307.375</b>	GND CON <b>275.8</b>	CLNC DEL <b>120.5 335.8</b>
------------------------------	---------------------------------------	---------------------------------	-------------------------	--------------------------------



CATEGORY	A	B	C	D	E
S-ILS 13C *	1282/24		200	(200-½)	
S-LOC 13C **	1420/24	338 (400-½)	1420/26	338	(400-½)
SIDESTEP 13L	1440-1	362 (400-1)	1440-1½ 362 (400-½)	1440-2	362 (400-2)
SIDESTEP 13R	1480-1	403 (400-1)	1480-1½ 403 (400-½)	1480-2	403 (400-2)
CIRCLING ***	1500-1 418 (500-1)	1540-1 458 (500-1)	1700-1¾ 618(700-1¾)	1700-2 618 (700-2)	1740-2¼ 658(700-2¼)

DEL RIO, TEXAS 29°22'N-100°47'W LAUGHLIN AFB (KDLF)

HI-ILS or LOC/DME Z RWY 13C

SC-3, 05 SEP 2024 to 03 OCT 2024

SC-3, 05 SEP 2024 to 03 OCT 2024