

RNAV (GPS) RWY 13C

APCH CRS 128°	Rwy Idg 8852 8316 6571	13C	13L	13R
	TDZE 1082 1078 1077			
	Arprt Elev 1082			

AL-111 (USAF)

LAUGHLIN AFB (KDLF)

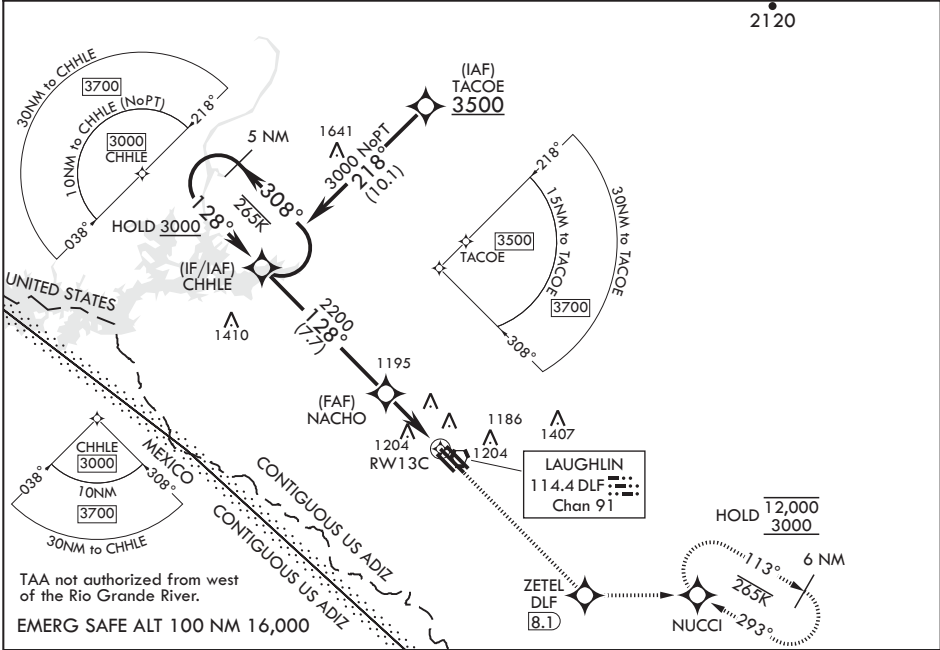
RNP APCH - GPS



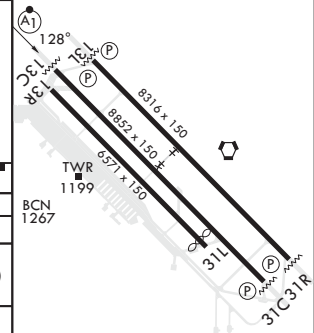
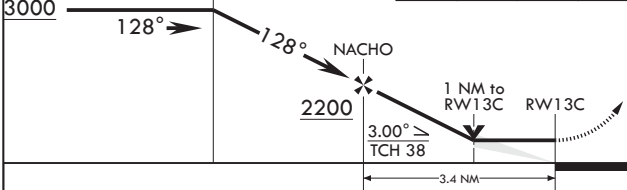
MISSED APPROACH: Climb to 3000 direct ZETEL, then track 083° to NUCCI and hold.

▼ * When ALS inop, increase CAT AB RVR to 55 and vis to 1 mile, CAT CDE vis to 1 1/4 miles.
** Circling SW of Rwy 13R-31L not authorized.

ATIS ★ 114.4 269.9	DEL RIO APP CON 119.6 259.1	TOWER ★ 125.2 307.375	GND CON 275.8	CLNC DEL 120.5 335.8
------------------------------	---------------------------------------	---------------------------------	-------------------------	--------------------------------



5 NM Holding Pattern 3000 128°	CHHLE	3000	ZETEL	tr 083°	NUCCI	ELEV 1082	TDZE 13C 1082	TDZE 13L 1078	TDZE 13R 1077
--------------------------------------	-------	------	-------	---------	-------	-----------	---------------	---------------	---------------



CATEGORY	A	B	C	D	E
LNAV MDA*	1440/24 358 (400-½)		1440/30 358 (400-¾)		
SIDESTEP 13L	1440-1 362 (400-1)		1440-1½ 362 (400-1½)	1440-2 362 (400-2)	
SIDESTEP 13R	1480-1 403 (400-1)		1480-1½ 403 (400-1½)	1480-2 403 (400-2)	
☐ CIRCLING**	1500-1 418 (500-1)	1540-1 458 (500-1)	1700-1¾ 618 (700-1¾)	1700-2 618 (700-2)	1740-2¼ 658 (700-2¼)

Rwy 31L Idg 6282'
MIRL Rwy 13R-31L
HIRL Rws 13C-31C, 13L-31R

RNAV (GPS) RWY 13C

SC-3, 05 SEP 2024 to 03 OCT 2024

SC-3, 05 SEP 2024 to 03 OCT 2024