

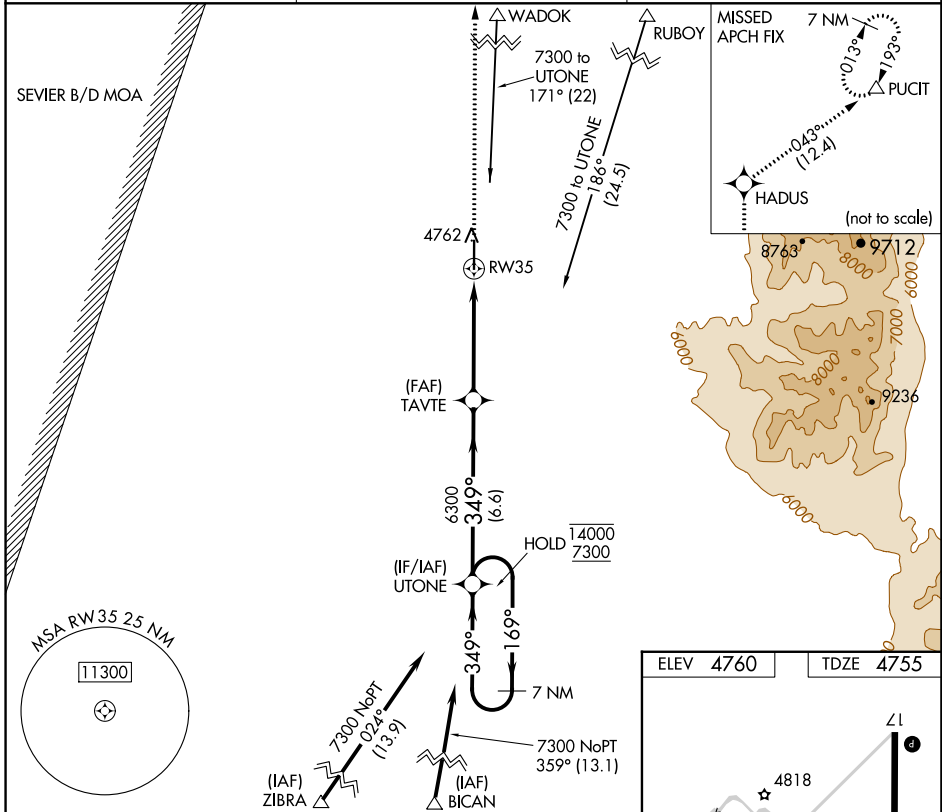
WAAS CH 61124 W35A	APP CRS 349°	Rwy Idg TDZE Apt Elev	6065 4755 4760
--	------------------------	-----------------------------	---

RNAV (GPS) RWY 35

DELTA MUNI (DTA)

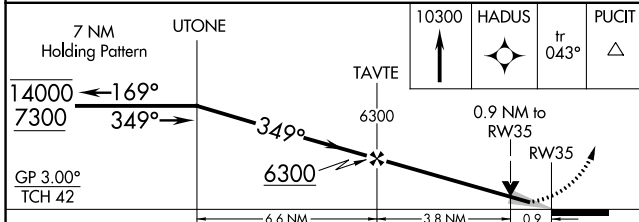
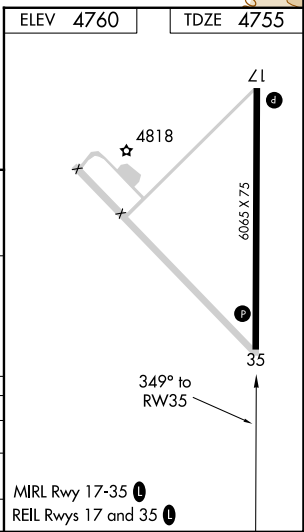
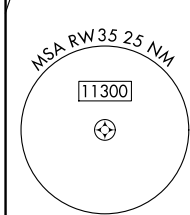
RNP APCH-GPS.	MISSED APPROACH: Climb to 10300 direct HADUS and on track 043° to PUCIT and hold.
<p>▼ For uncompensated Baro-VNAV systems, LNAV/VNAV NA below -24°C or above 54°C.</p>	

AWOS-3 127.75	SALT LAKE CENTER 127.825 239.025	UNICOM 122.8 (CTAF) 0
-------------------------	--	---------------------------------



SW-4, 05 SEP 2024 to 03 OCT 2024

SW-4, 05 SEP 2024 to 03 OCT 2024



CATEGORY	A	B	C	D
LPV DA		4955-1	200 (200-1)	
LNAV/VNAV DA		5005-1	250 (300-1)	
LNAV MDA		5080-1	325 (400-1)	

MIRL Rwy 17-35 0
REIL Rwy 17 and 35 0