

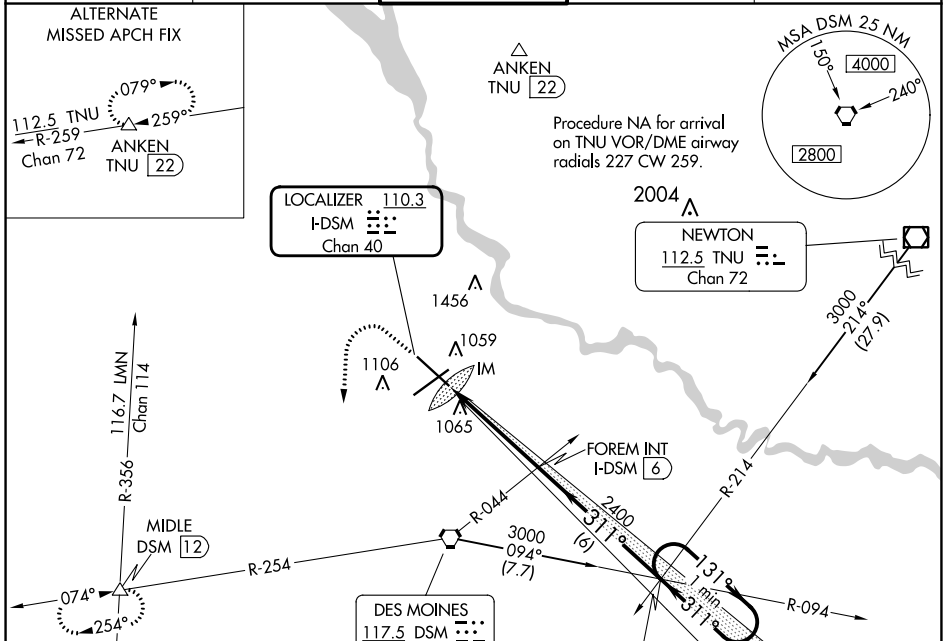
LOC/DME I-DSM 110.3 Chan 40	APP CRS 311°	Rwy ldg TDZE Apt Elev 9001 958 958
--	------------------------	--

ILS RWY 31 (SA CAT I)

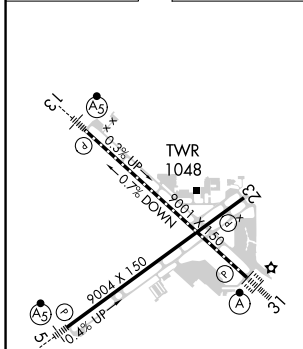
DES MOINES INTL (DSM)

<p>Requires specific OPSPEC, MSPEC, or LOA approval and use of HUD to DH.</p>	<p>ALSF-2</p>	<p>MISSED APPROACH: Climb to 1600 then climbing left turn to 3000 on heading 180° and on DSM VORTAC R-254 to MIDDLE INT/12 DME and hold.</p>
---	---------------	--

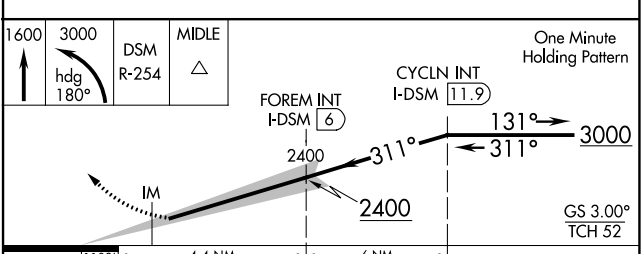
<p>ATIS 119.55</p>	<p>DES MOINES APP CON 123.9 307.15</p>	<p>DES MOINES TOWER 118.3 257.8</p>	<p>GND CON 121.9 348.6</p>	<p>CLNC DEL 134.15 317.55</p>
-------------------------------	---	--	---------------------------------------	--



ELEV 958	D	TDZE 958
----------	----------	----------



Procedure NA for arrival on DSM VORTAC airway radials 042 CW 141.



CATEGORY	A	B	C	D
S-ILS 31	RA 159/14 150 DA 1108			

SA CATEGORY I ILS-SPECIAL AIRCREW & AIRCRAFT CERTIFICATION REQUIRED

REIL Rwy 5 and 23
TDZ/CL Rwy 31
HIRL Rwy 13-31 and 5-23

NC-3, 05 SEP 2024 to 03 OCT 2024

NC-3, 05 SEP 2024 to 03 OCT 2024