

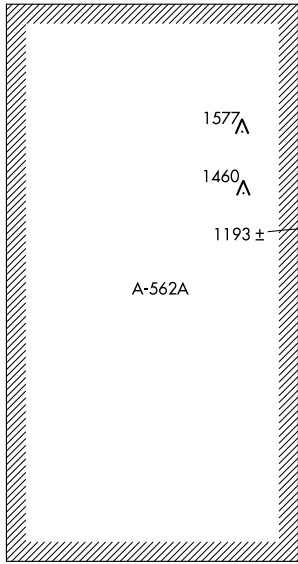
VOR/DME ODG 109.0 Chan 27	APP CRS 357°	Rwy Idg 8002 TDZE 1147 Apt Elev 1167
--	------------------------	---

VOR RWY 35

ENID WOODRING RGNL (WDG)

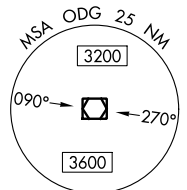
<p>Circling Rwy 13 NA at night.</p>	<p>MALS</p>	<p>MISSED APPROACH: Climb to 3000 then right turn direct ODG VOR/DME and hold.</p>	
			<p>AWOS-3PT 123.725</p>

△ 2037



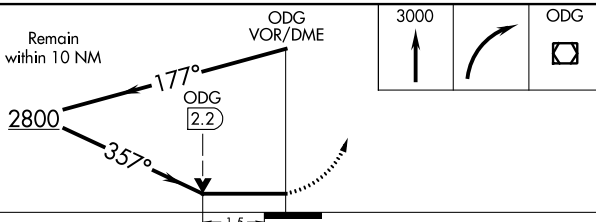
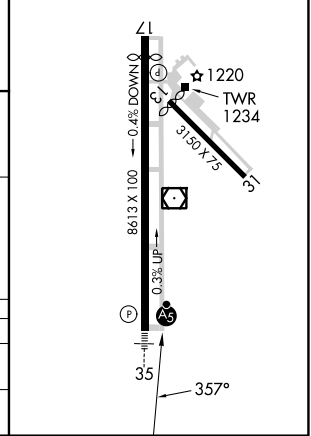
PIONEER
113.2 PER Chan 79

IAF
WOODRING
109.0 ODG Chan 27



WILL ROGERS
114.1 IRW Chan 88

ELEV 1167		TDZE 1147
MIRL Rwy 17-35		REIL Rwy 17



CATEGORY	A	B	C	D
S-35	1680-1/2	533 (600-1/2)	1680-1	533 (600-1)
CIRCLING	1760-1	593 (600-1)	1820-1 3/4 653 (700-1 3/4)	1880-2 1/4 713 (800-2 1/4)

SC-1, 05 SEP 2024 to 03 OCT 2024

SC-1, 05 SEP 2024 to 03 OCT 2024