

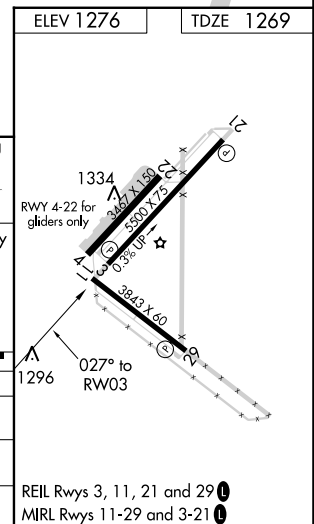
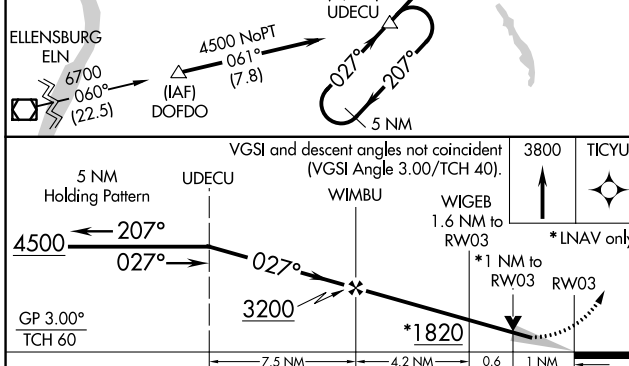
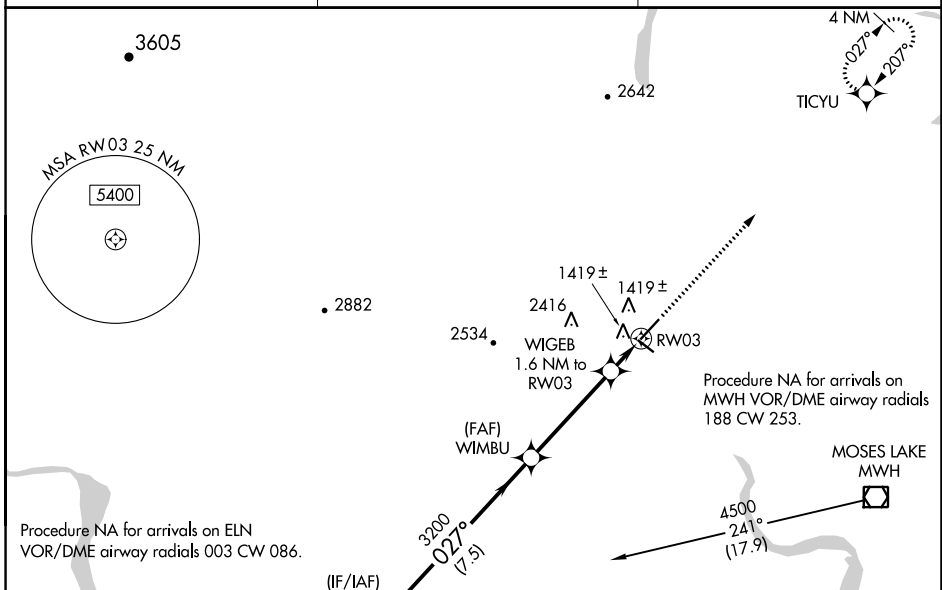
WAAS CH <b>50208</b> <b>W03A</b>	APP CRS <b>027°</b>	Rwy ldg <b>5500</b> TDZE <b>1269</b> Apt Elev <b>1276</b>
--	------------------------	---

# RNAV (GPS) RWY 3

EPHRATA MUNI (EPH)

RNP APCH.	<p>MISSED APPROACH: Climb to 3800 direct TICYU and hold.</p>
<p>⚠ For uncompensated Baro-VNAV systems, LNAV/VNAV NA below -17°C or above 46°C. VDP and Baro-VNAV NA when using Moses Lake/Grant County Intl altimeter setting. When local altimeter setting not received, use Moses Lake/Grant County Intl altimeter setting and increase all DA/MDA 40 feet and LNAV Cat C and D visibility 1/4 SM.</p>	

ASOS <b>135.775</b>	GRANT COUNTY APP CON * <b>126.4 379.95</b>	UNICOM <b>122.8 (CTAF) 0</b>
------------------------	---	---------------------------------



CATEGORY	A	B	C	D
LPV DA		1519-1	250 (300-1)	
LNAV/VNAV DA		1689-1½	420 (500-1½)	
LNAV MDA	1680-1	411 (500-1)	1680-1¼	411 (500-1¼)

NW-1, 05 SEP 2024 to 03 OCT 2024

NW-1, 05 SEP 2024 to 03 OCT 2024